

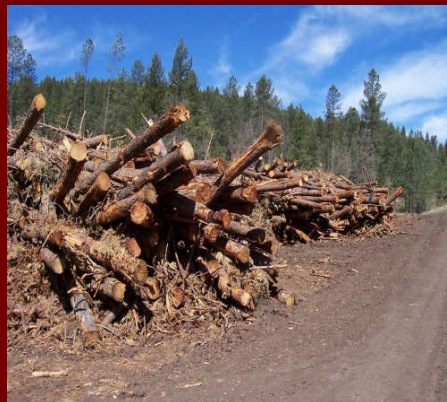
BIA / Environmental and Energy Study Institute: Tribal Woody Biomass Energy Briefing

Presentation to the Intertribal Timber
Council

December 10, 2008

BIA/Tribal – Woody Biomass Efforts

- In FY 2008, BIA-Division of Forestry and Wildland Fire Management strengthened its efforts in supporting and promoting woody biomass energy development on tribal lands. This focused effort has many long-term resource management benefits as well as potentially improving tribal economic development, and encouraging tribal energy self-sufficiency opportunities.



BIA/Tribal – Woody Biomass Development Goal



- To improve and strengthen our ability to promote the utilization of woody biomass in tandem with aggressive forest management activities, with the primary objective of providing viable resource utilization opportunities for wood material. This will allow us to sustain healthy resilient forests, while contributing to Tribal ecological, social, and economic well-being.

Current Activities Supporting Woody Biomass Projects

- Participating on the Federal Woody Biomass Working Group (WBUG), an interagency effort promoting the ecological and economically sustainable use of woody biomass which focuses on national contracting, coordination, policy, and regulatory issues.
- BIA is a member on an established Department of the Interior, task group working on the development of an Interior Woody Biomass Utilization Desk Guide.

Current Activities Supporting Woody Biomass Projects

- Assist in the dissemination of information and training to the field of new technologies and science related to the implementation of wood heating and energy systems, including on the ground fuel supply harvesting and handling methods and processing.
- Assist in the promotion and the development of new and expanded markets for bioenergy and biobased products generated from tribal resources.

Current Activities Supporting Woody Biomass Projects

- Continue to encourage the adoption of wood energy systems in federal and tribal facilities located in resource endowed locations across the country. Continue efforts to develop viable projects within the BIA- Office of Facilities Management and Construction program.

Current Activities Supporting Woody Biomass Projects

- Continue to promote collaboration and partnerships with federal agencies (USFS, DOE, Department of Agriculture, WGA) as well as State and non-profit organizations supporting biomass energy development efforts.

Most notable is a relationship developed with the Environmental and Energy Study Institute (EESI), Sustainable Biomass and Energy Program in Washington DC, who has committed to work with the BIA and the ITC on coordinating a Congressional briefing entitled, "*Woody Biomass on Indian Lands: An Affordable and Available Resource*".

Environmental and Energy Study Institute: *Advancing Innovative Solutions!*



- A non-profit organization founded in 1984, by a bipartisan Congressional Caucus
- Dedicated to promoting sustainable societies through innovative policies on energy, climate, transportation, biomass, buildings, and smart growth
- Provides timely information regarding science, policy, and technologies
- Conducts ~20 Congressional briefings a year
- Builds coalitions and networks
- Publishes 3 electronic newsletters
 - BCO – Bioenergy, Climate Protection & Oil Reduction
 - Climate Change News
 - Clean Motion
- EESI Associates Program allows companies and individuals to participate

Broad Biomass Policy Objectives



- Climate Change
- Environmental Stewardship
- National Energy and Security
- Public Health
- International Competitiveness
- Economic Development through Local Ownership
- Diversify and Sustainably Grow the Domestic Agriculture Portfolio while Decreasing Dependence on Export Markets

Farm Bill Reauthorization

- 2002 Farm Bill: *Farm Security and Rural Development Act of 2002 (P.L.107-171)*
 - First Ever Energy Title (Title IX): \$405 million in mandatory funding over five year
- 2008 Farm Bill: *Food, Conservation, and Energy Act of 2008 (P.L. 110-246)*
 - Energy Title - \$1 billion in mandatory funding over 5 year
 - Renewable energy programs
 - New feedstock production for bioenergy

Rural Energy for America Program

(Sec. 9007)

- Financial Assistance for agriculture producers and rural small businesses
 - Grants, loan guarantees and incentive payments
 - Feasibility studies, renewable energy systems, energy efficiency improvements
 - Grants may not exceed 25% of the cost of the project
 - Loan Guarantees may not exceed \$25 mil
 - Combined Grants and Loan guarantees can not exceed 75% of total costs
 - Reserves 20% of funds for projects of \$20,000 or less

Rural Energy Self-Sufficiency Initiative

(Sec. 9009)

- **Grants for community-wide rural energy systems that reduce conventional energy use and increase renewable energy sources**
 - Cost-share up to 50%
 - Assess energy use in rural community
 - Evaluate ideas for reducing energy use
 - Develop and install integrated renewable energy systems
- \$20 mil discretionary (\$5 mil/yr FY09-12)

Biomass Crop Assistance Program

(Sec. 9011)

- Financial assistance for production of biomass energy crops
 - Includes establishment costs and annual payments for biomass production
 - Economically practicable distance from a facility
- Infrastructure for harvesting storage and transportation of biomass to local biorefineries
 - Matching payments of \$1/ton provided by the biomass conversion facility up to \$45/ton
- CCC such sums as are necessary for FY08-12

Forest Biomass for Energy

(Sec. 9012)

- Authorizes comprehensive research and development program to use forest biomass for energy. \$15 mill/yr, FY09-FY12. (Specifically mentions Tribes as eligible)

Priorities:

- The use of low-value forest biomass for energy from forest health and hazardous fuels reduction treatments.
- The integrated production of energy from forest biomass into biorefineries or other existing manufacturing.
- The development of new transportation fuels from forest biomass.
- The improved growth and yield of trees for renewable energy production.

Community Wood Energy Program

(Sec. 9013)

- Provides grants up to \$50,000 or up to 50% of the cost
- Helps communities develop wood energy plans and purchase systems for public buildings
- \$5 mil/yr discretionary FY09-12



Emergency Economic Stabilization Act of 2008

- The “bail out” bill contains a number of renewable energy provisions, including an extension of the PTC tax credit for biopower.
- The bill also includes an investor tax credit for small-scale, combined heat and power facilities.
 - 10% on the first 15 mW
 - <50 mW total
 - At least 60% energy efficient

Next Steps

- EESI sees woody biomass as an important energy resource and economic opportunity for Tribal communities.
- We will follow implementation of the Farm Bill programs and other federal programs to ensure inclusion of Tribal interests.
- We will educate and inform policymakers on the need to provide incentives and assistance for Tribes to encourage and support biomass utilization.

Congressional Briefing Should Emphasize

- The issue of energy security, supply, and cost is a large concern facing Tribes.
- Forest resources are abundant for many Tribes, and continue to be actively managed addressing wildfire risk and forest health issues.



Congressional Briefing Should Emphasize



- The development of woody biomass projects can provide locally-produced, reasonably priced energy for many tribal communities.
- Discuss federal policies, procedures, and legislation that could further help to improve the attainment of these objectives.

Briefing Strategy

- Tentatively planned for Spring 2009.
- Target Audience is Congress their staff, members of the Administration, and a broad range of constituencies (anticipate 80-110 attendees).
- Every Congressional office will receive briefing notice and information on the briefing will be shared with more than 6000 individuals and organizations in EESI's extensive database.
- Briefing will be held in either the House or Senate Offices.

Briefing Planning

- Requesting support from ITC to “co-sponsor” session
- Assist in the planning to identify 4-5 presenters
- Assist in briefing outreach to tribes, tribal organizations, and others.
- Assist in developing a strategy to address follow-up information requests



For More Information Contact

Jesse Caputo, Policy Associate
(202) 662-1882
jcaputo@eesi.org

Carol Werner, Executive Director
(202) 662-1881
cwerner@eesi.org

Ned Stowe, Policy Associate
(202) 662-1885
nstowe@eesi.org



EESI: Advancing Innovative Solutions!
www.eesi.org