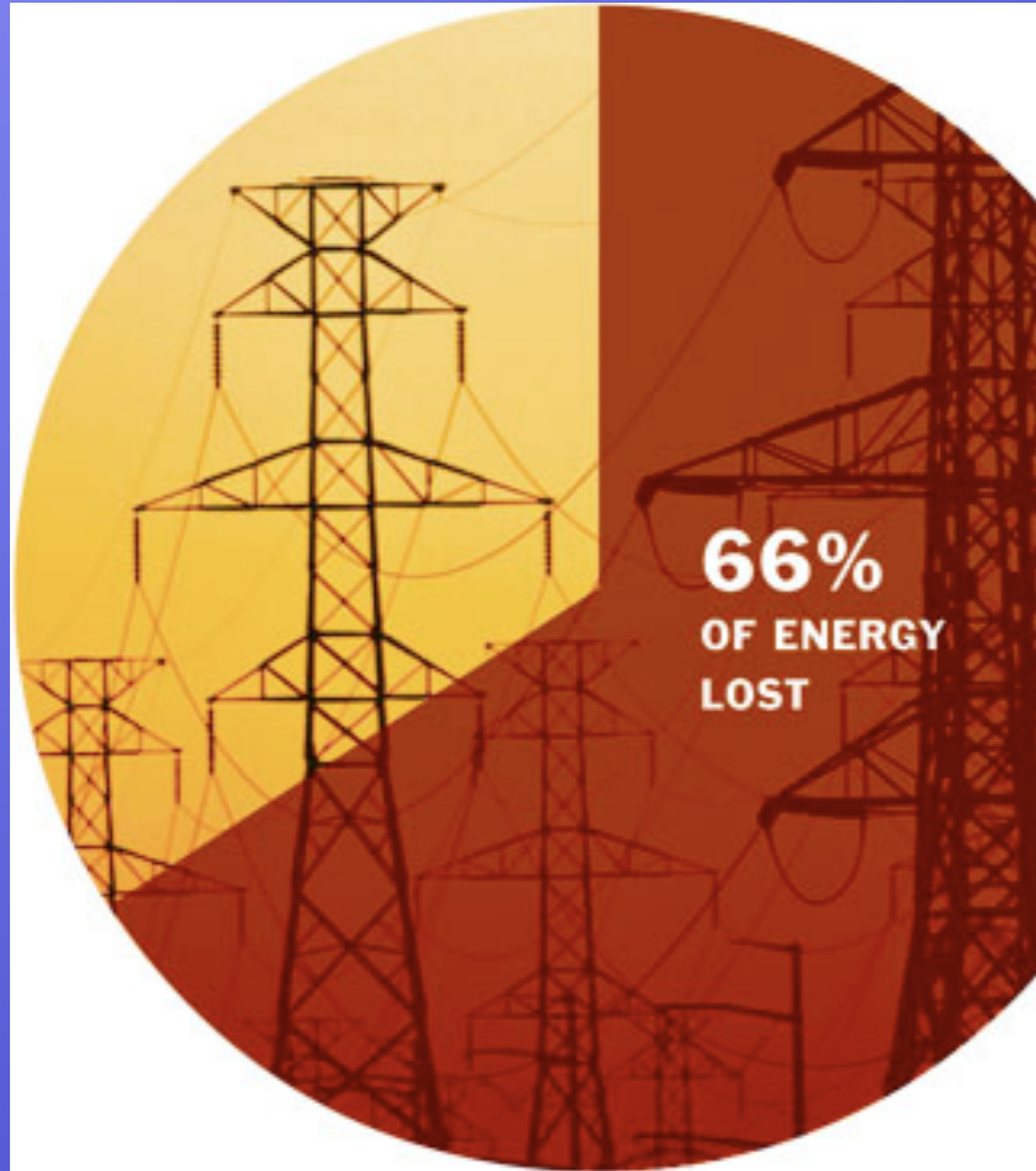


Renewable Energy and Transmission: Opportunities and Barriers



EESI

June 13, 2008

Jon Wellinghoff
Commissioner
FERC

FERC Transmission Authority (Interstate)

- ★ **Cost Allocation & Pricing**
- ★ **Interconnection**
- ★ **Reliability**
- ★ **Planning**
- ★ **Siting**

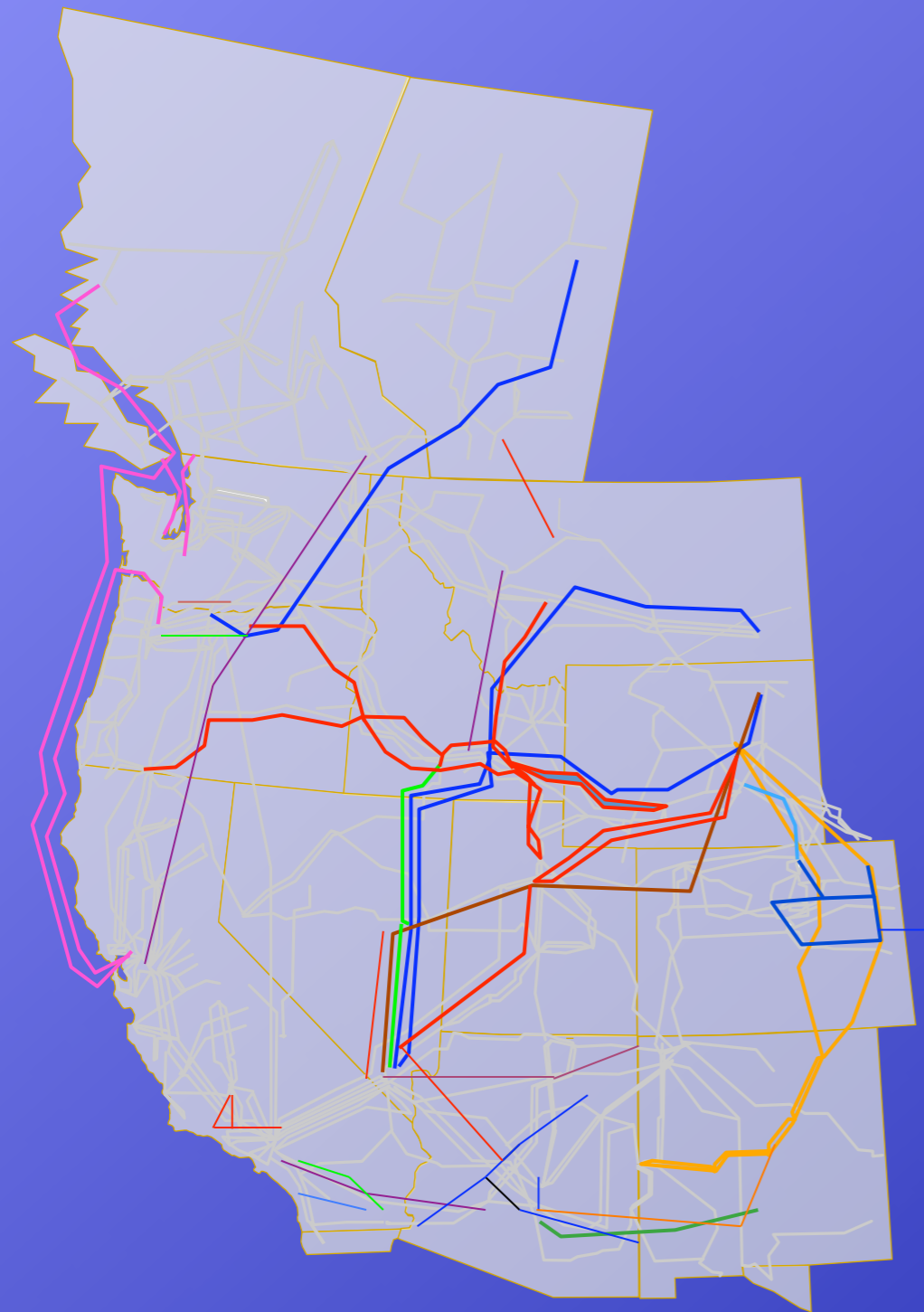
FERC Transmission Planning

- ★ Order 890 Transmission Planning (Order 888 OATT Reform)
- ★ Applies to All Jurisdictional Transmission Providers
 - ★ Open, Transparent, Coordinated, Regional
 - ★ Supply and Demand Treated on “Comparable Basis”
 - ★ DR, EE, CHP, DG & Grid Efficiency Treated Equally

Transmission Siting

- ★ **NIETC Authority (2005 EPACT)**
 - ★ DOE Corridor Designations
 - ★ FERC Backstop Siting Authority
- ★ **FPC Hydro Authority**
 - ★ Section 21
- ★ **Natural Gas Act Authority**
 - ★ Section 7(c)

Renewable Transmission Proposals



Major Proposed Transmission Projects (many other smaller proposed smaller projects)

- Sea Breeze Projects
- TransCanada Projects
- Gateway Projects (NTTG)
- TransWest Express
- LS Power & Great Basin Projects
- WY-CO Intertie Project
- Eastern Plains Project
- High Plains Express
- Sun-ZIA
- Mountain States Transmission Intertie
- Canada-Northern California
- West of McNary
- Southern Crossing
- Navajo Transmission Project
- Robinson Summit-Harry Allen
- Sunrise Powerlink
- Lethbridge (AB) - Great Falls
- Palo Verde - Devers
- Green Path
- Tehachapi

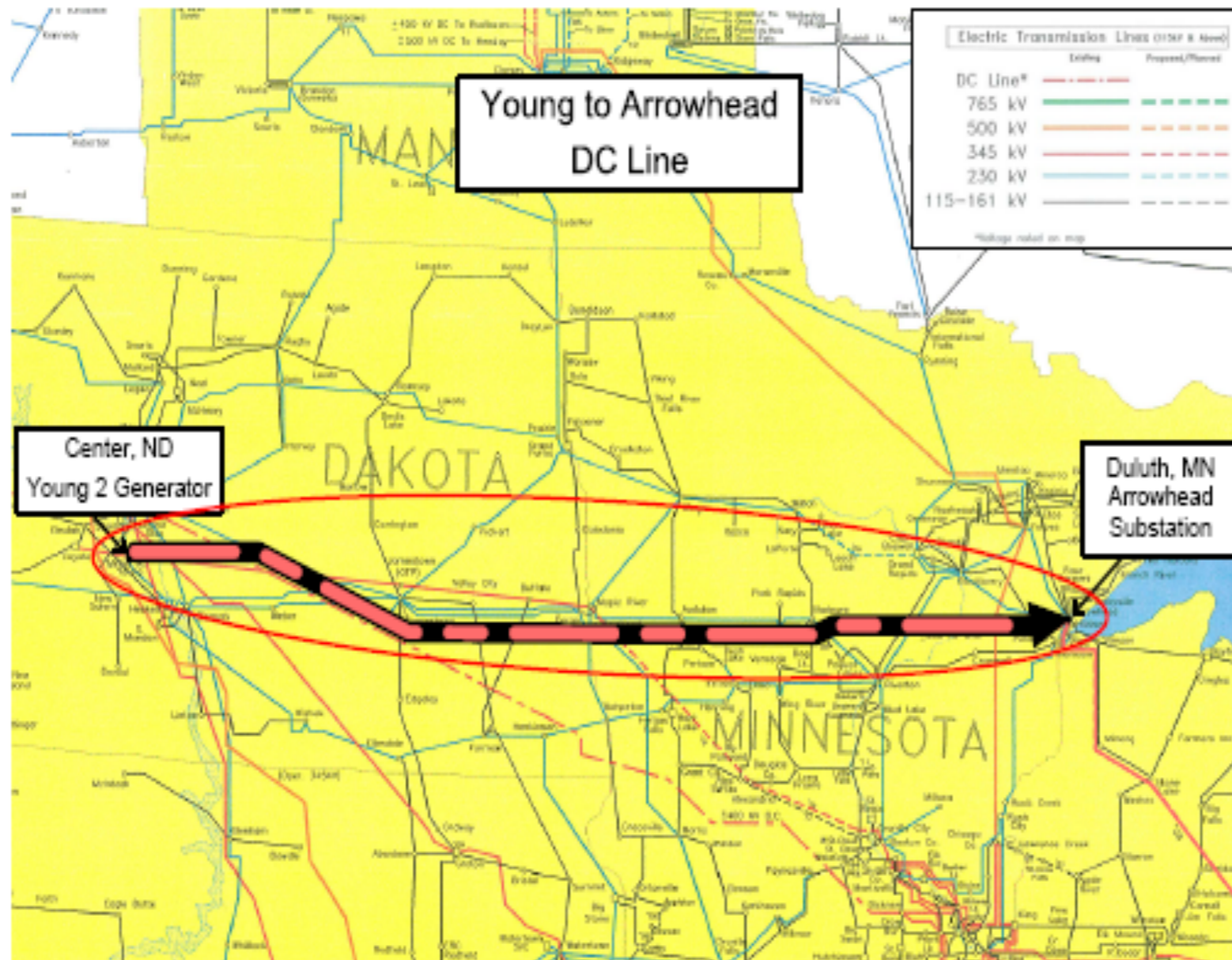
Renewable Transmission Proposals



Renewable Transmission Proposals



Renewable Transmission Proposals



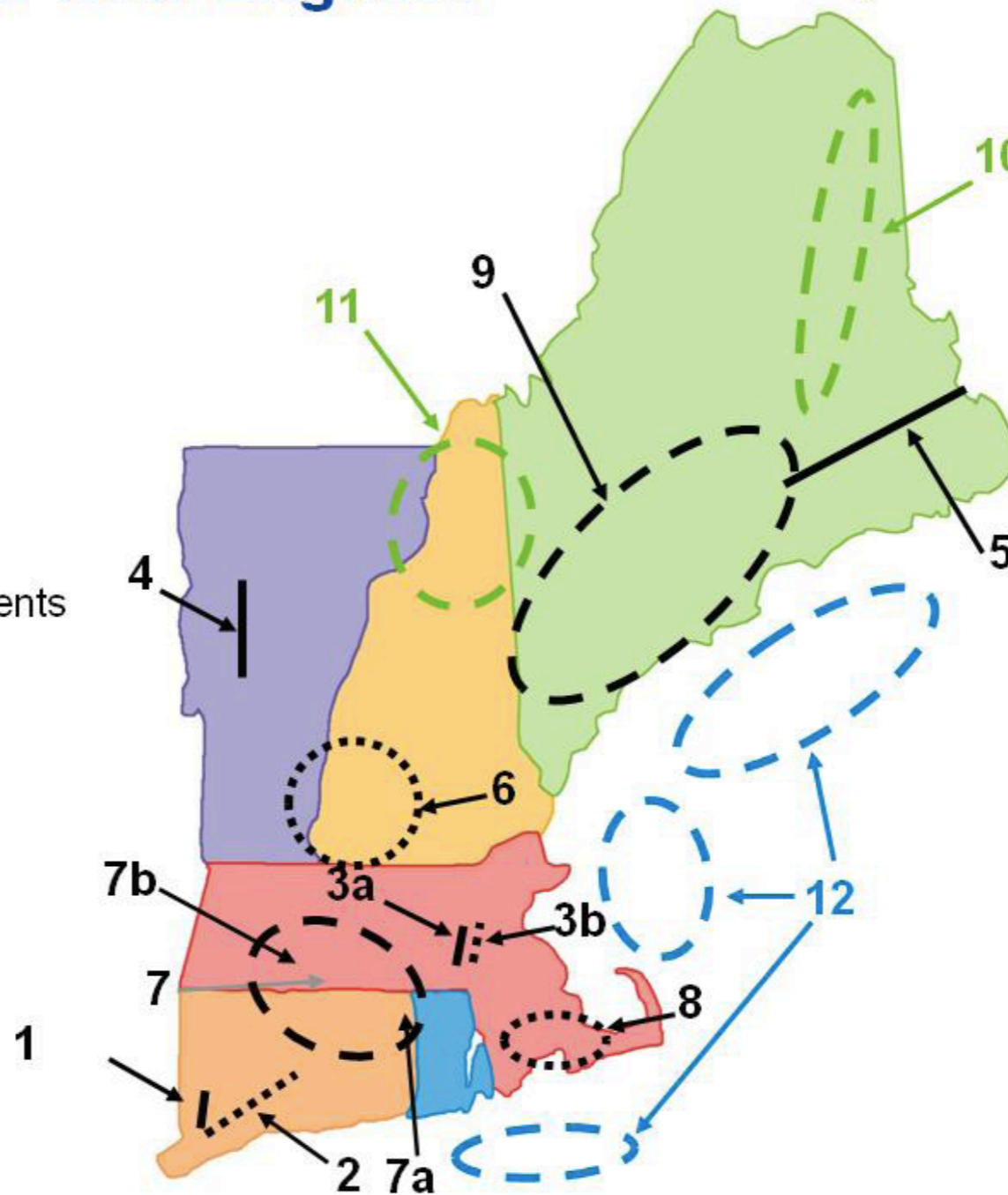
Renewable Transmission Proposals

Potential Renewables in New England

Figure 2

1. Southwest CT Phase I
2. SWCT Phase II
3. NSTAR 345 kV Project
 - a. Phase I
 - b. Phase II
4. Northwest Vermont
5. Northeast Reliability Interconnect
6. Monadnock Area
7. New England East-West Solution
 - a. Greater Rhode Island
 - b. Springfield 115 kv Reinforcements
8. Southeast Massachusetts
9. Maine Power Reliability Program
10. Maine Power Connection
11. Northern New Hampshire
12. Off-shore wind

- In service
..... Under construction
- - Under study



Conclusions

- ★ **Limited Siting Authority**
- ★ **Regional Only Planning Authority**
- ★ **No Authority to Order Construction**
- ★ **Multiple Proposals for Renewables**
- ★ **No National Transmission Plan to Coordinate Multiple Proposals**