



Climate Change Impacts in the Southeast and the U.S. Navy's Response



**CAPT Tim Gallaudet, Ph.D.
Deputy Oceanographer of the Navy
Task Force Climate Change
22 May 2014**



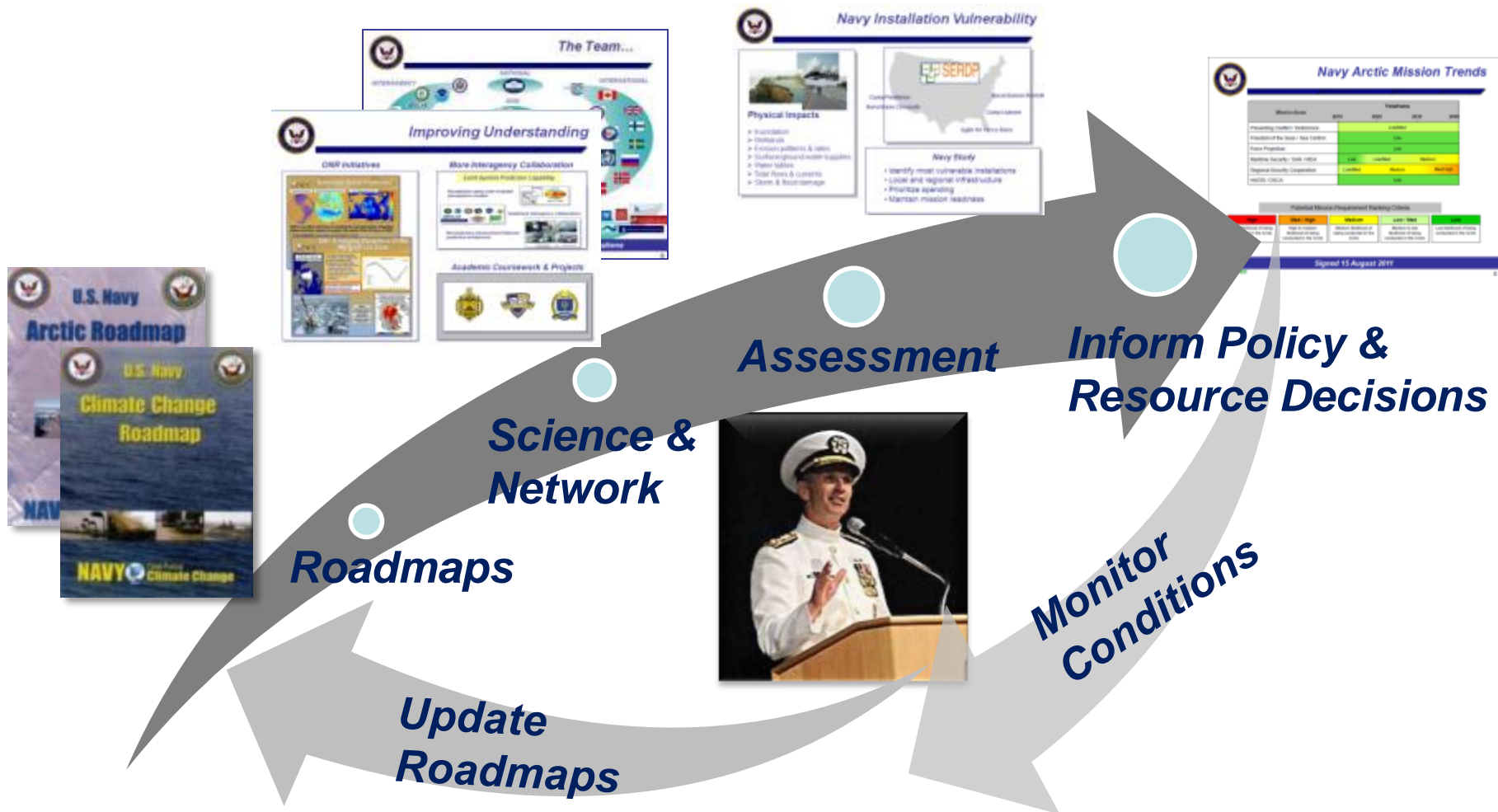
Not Just Talking...



DAVE GRANLUND © www.davegranlund.com



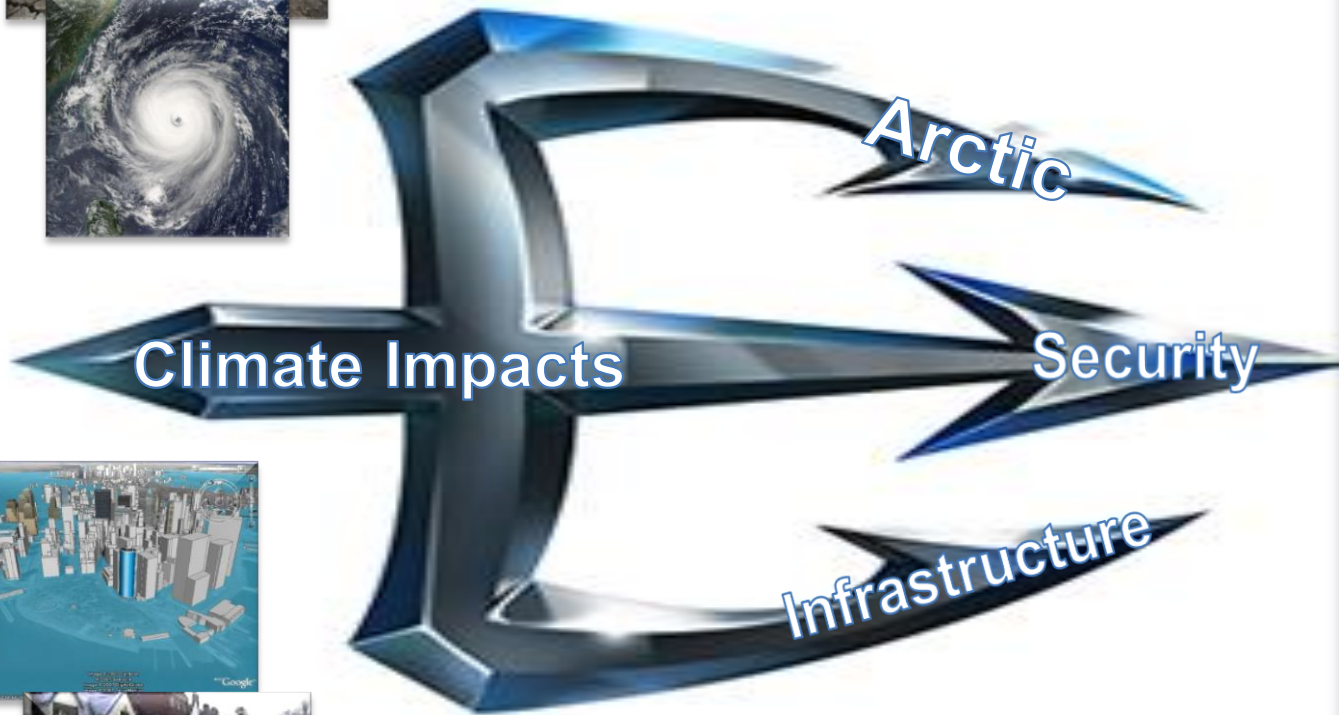
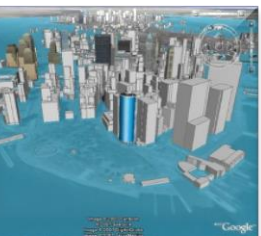
Task Force Climate Change



Science-based approach, cooperative partnerships, risk assessments



Climate Change Strategic Concerns



Risk Assessments
Partnerships
Plans & Policy
Preparedness
Resilience

Responsiveness
Readiness
Strategies
Methodologies

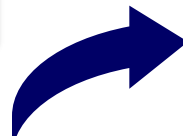


Navy Sea Level Rise Concerns



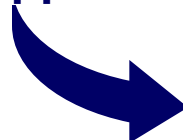
Physical Impacts

- Inundation
- Wetlands
- Erosion patterns & rates
- Surface/ground water supplies
- Water tables
- Tidal flows & currents
- Storm & flood damage



Challenges

- Infrastructure
- Mission capabilities
- Training & testing lands
- Transportation means/facilities



Opportunities

- Adaptation partnerships
- Recapitalization incentive



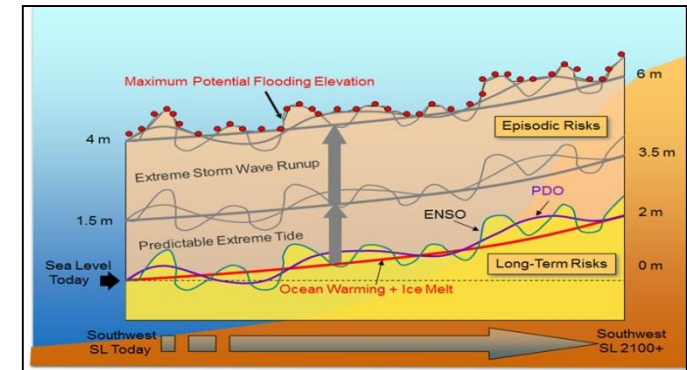
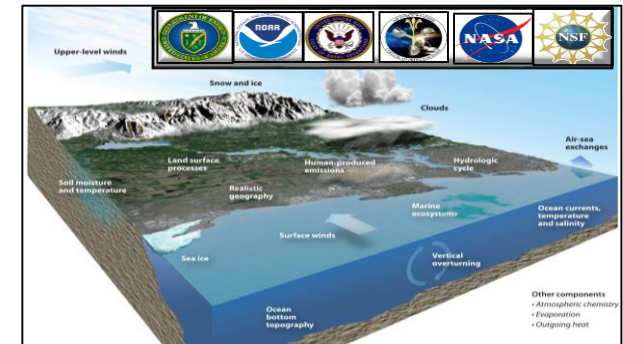
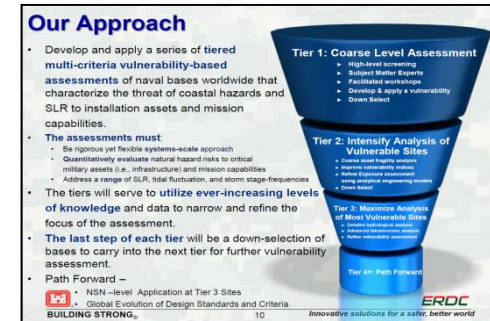
Directly impacts readiness, strategic access, & influence



DoD Efforts to Provide Solutions



- **Vulnerability Methodologies**
 - **Coastal Screening Level Assessment**
- **Long Term Climate Prediction**
 - **Earth System Prediction Capability**
- **Local Sea Level Rise Scenarios**
 - **DoD Regional Scenarios Due May 2014**
- **Proven Partnerships and Effective Leadership**



It's all about Readiness ... today ... and tomorrow



Navy Facilities





Whole of Community Pilot Study

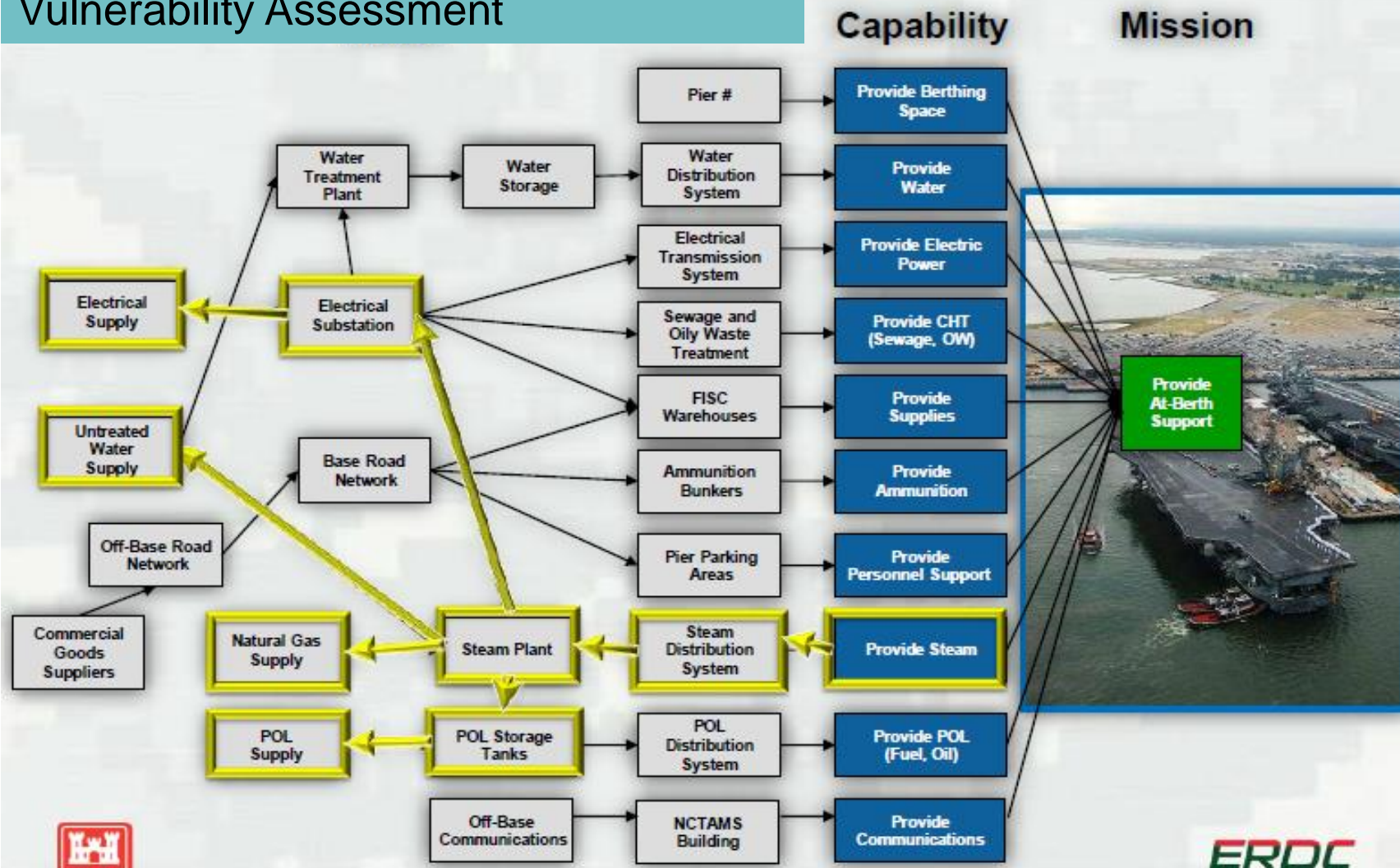




USN Hampton Roads

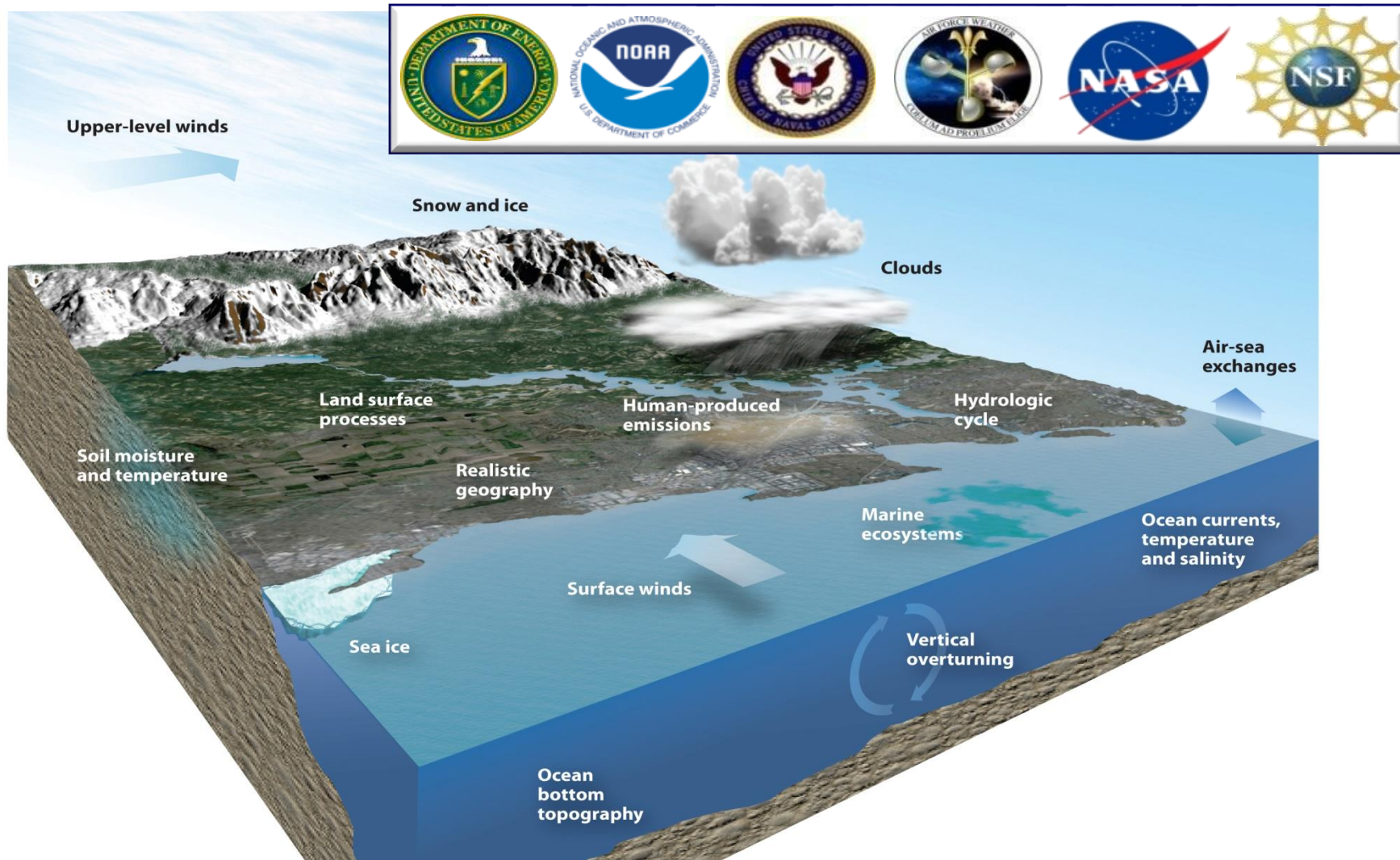


From USN Hampton Roads Vulnerability Assessment





Long Term Climate Prediction



ESPC: A unifying NATIONAL effort → one “BEST” prediction for all



Who Decides If & When to Act?





Questions?

