

# MASS TIMBER: INVESTIGATIONS

in the work of  
**ATELIERJONES**

EESI MASS TIMBER  
CONGRESSIONAL  
BRIEFING  
WASHINGTON, DC  
October 23, 2018

**SUSAN JONES, FAIA**

atelierjones, llc

911 Pine Street  
Floor Two  
Seattle, Washington 98101  
T: 206.624.9966  
F: 206.624.9957  
[www.atelierjones.com](http://www.atelierjones.com)



# sustainable forests





# restorative thinning

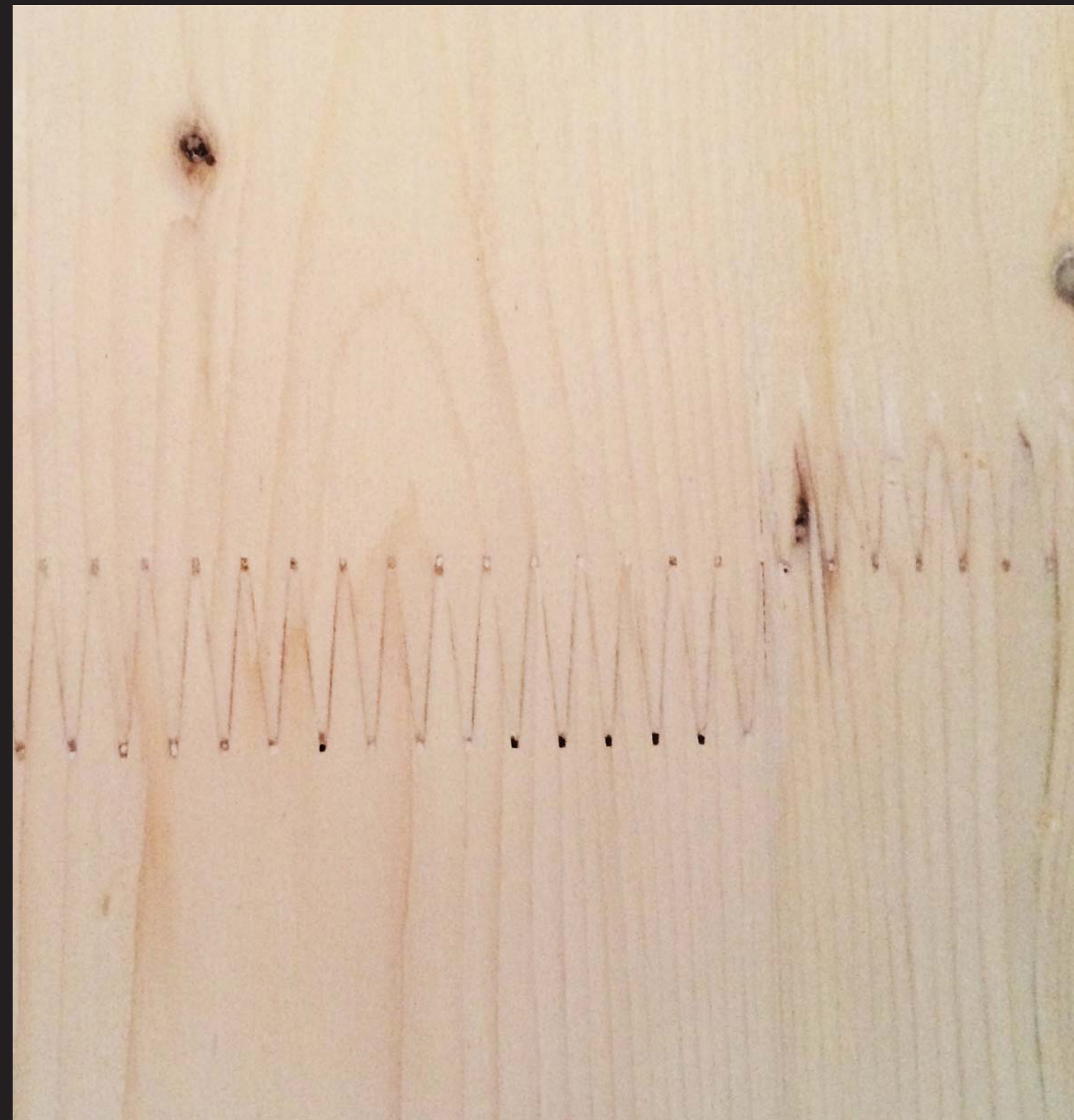




# small-diameter timber



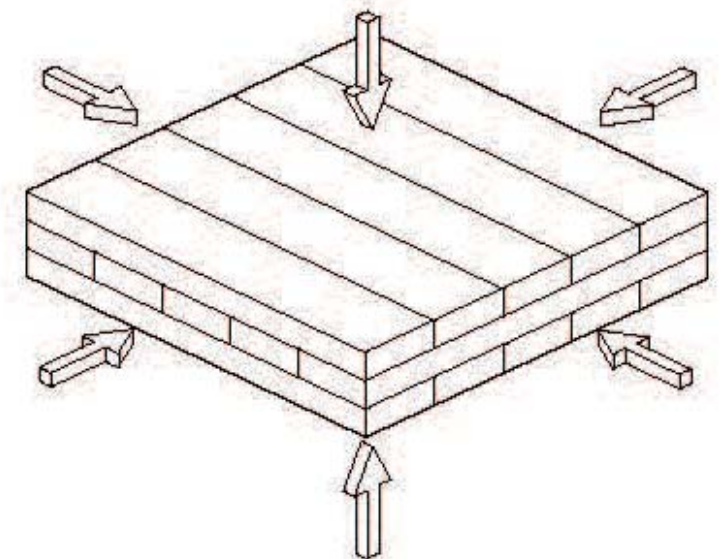
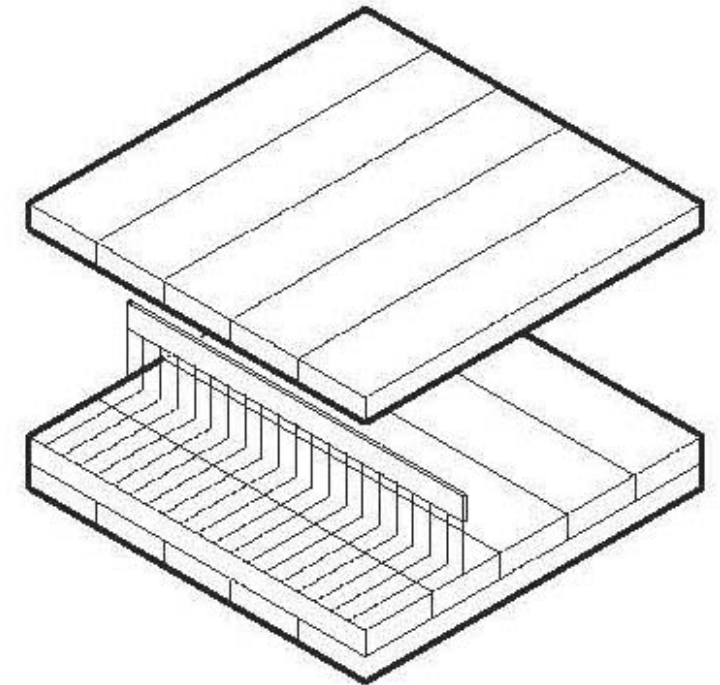
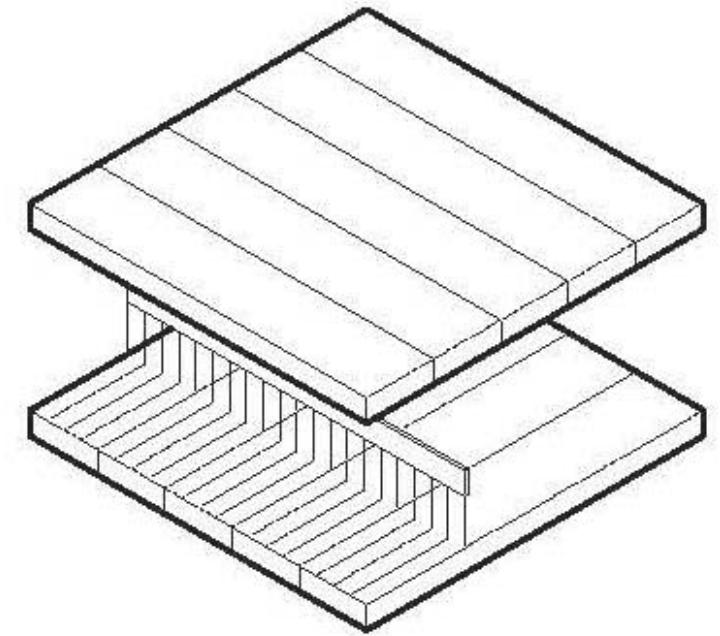








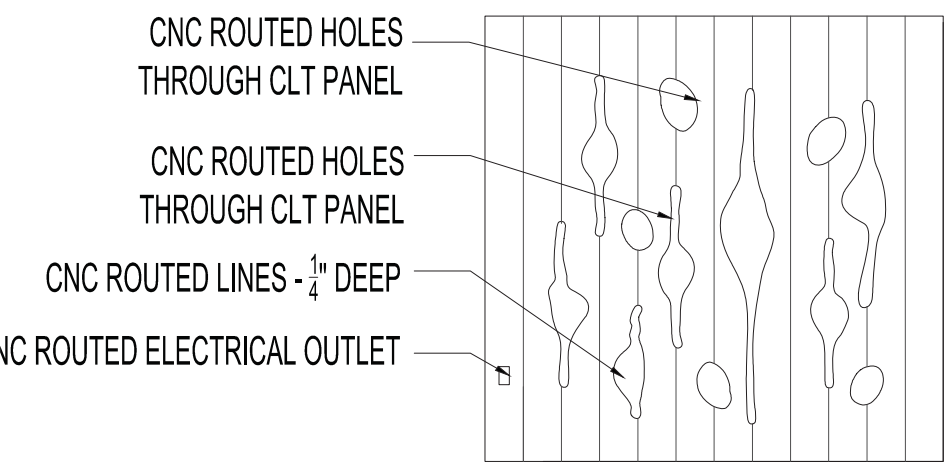
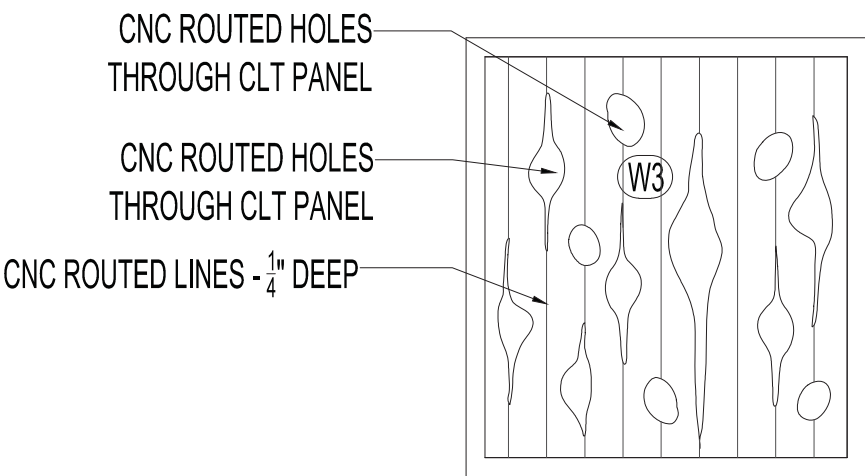
prefabrication logic











W3 east elevation - LOOKING FROM OUTSIDE IN

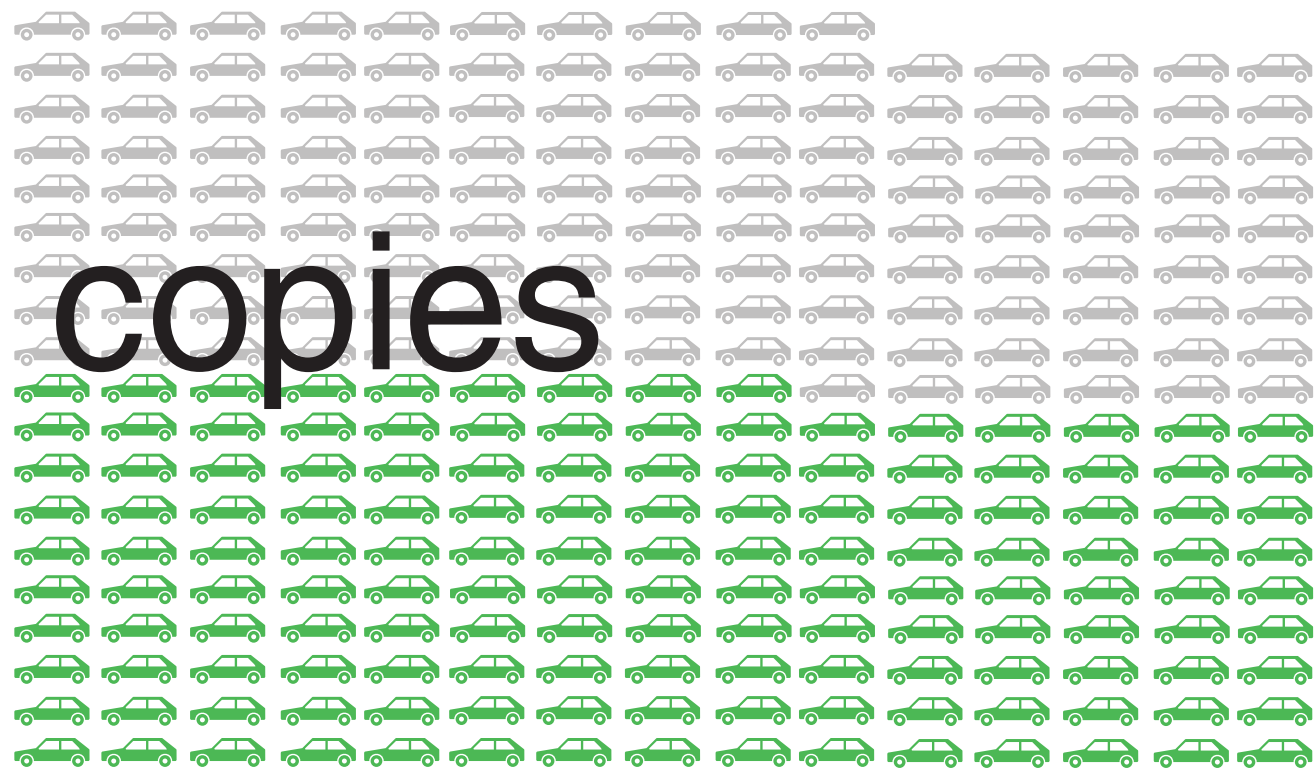






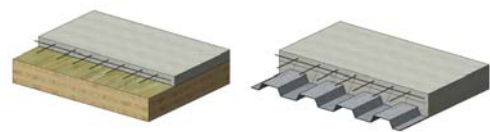


# carbon copies

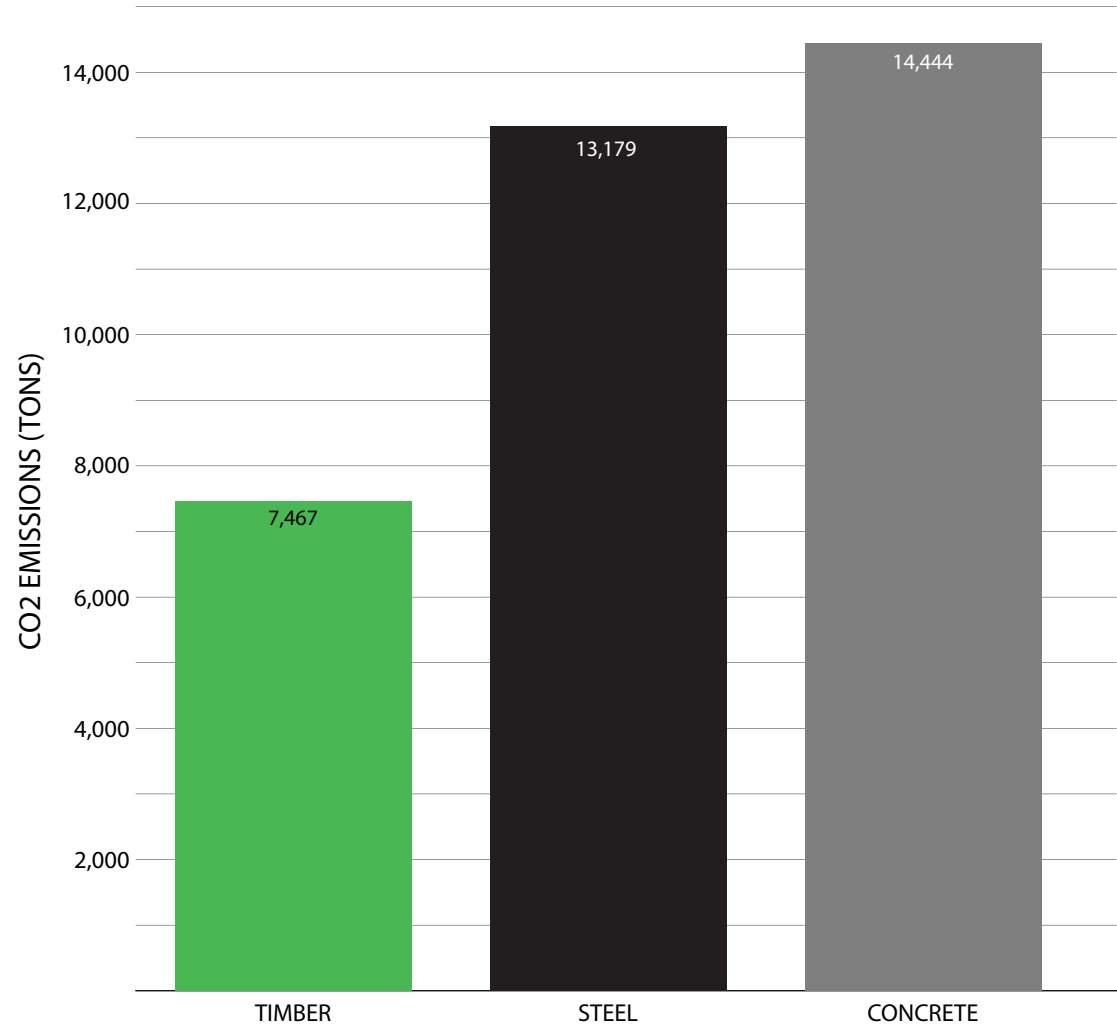


 = 10 cars

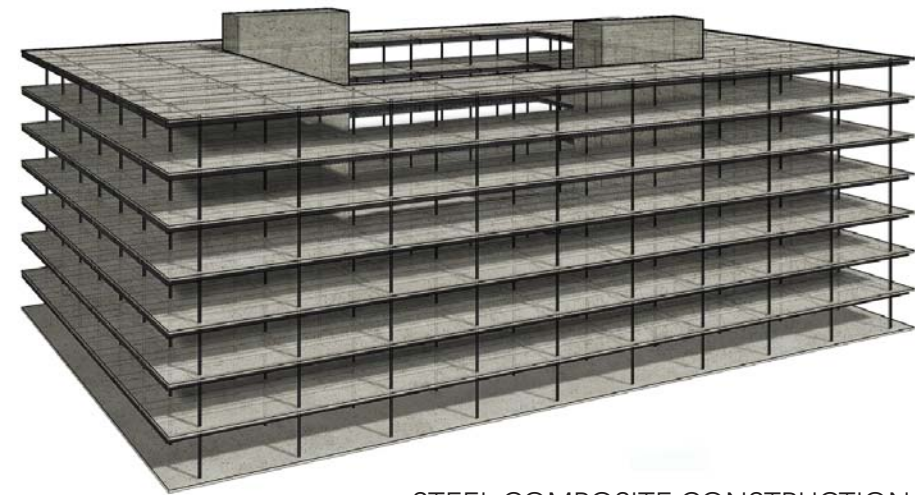
1 SQUARE FOOT OF FLOOR ASSEMBLY



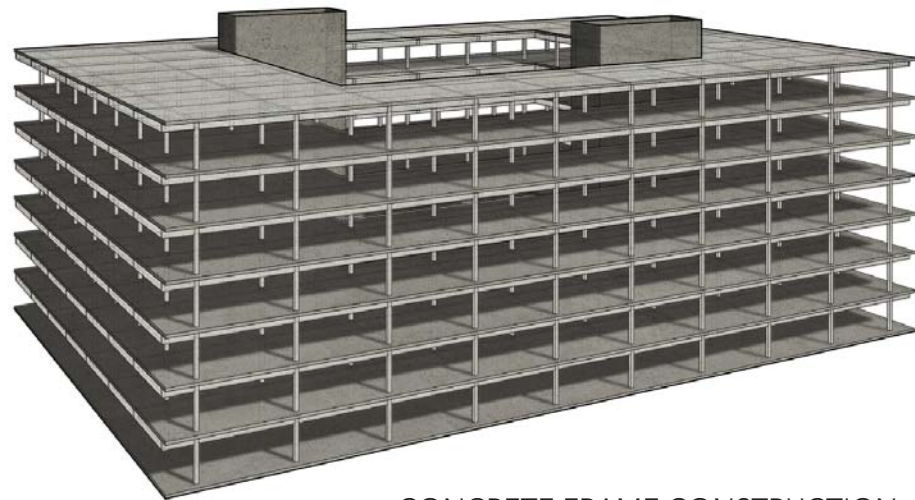
Building	Timber Floor with Concrete Topping	Steel composite Floor
----------	------------------------------------	-----------------------



TIMBER COMPOSITE CONSTRUCTION



STEEL COMPOSITE CONSTRUCTION



CONCRETE FRAME CONSTRUCTION





framework  
lever architecture

EESI CONGRESSIONAL BRIEFING  
WASHINGTON DC October 23 2018 ATELIERJONES



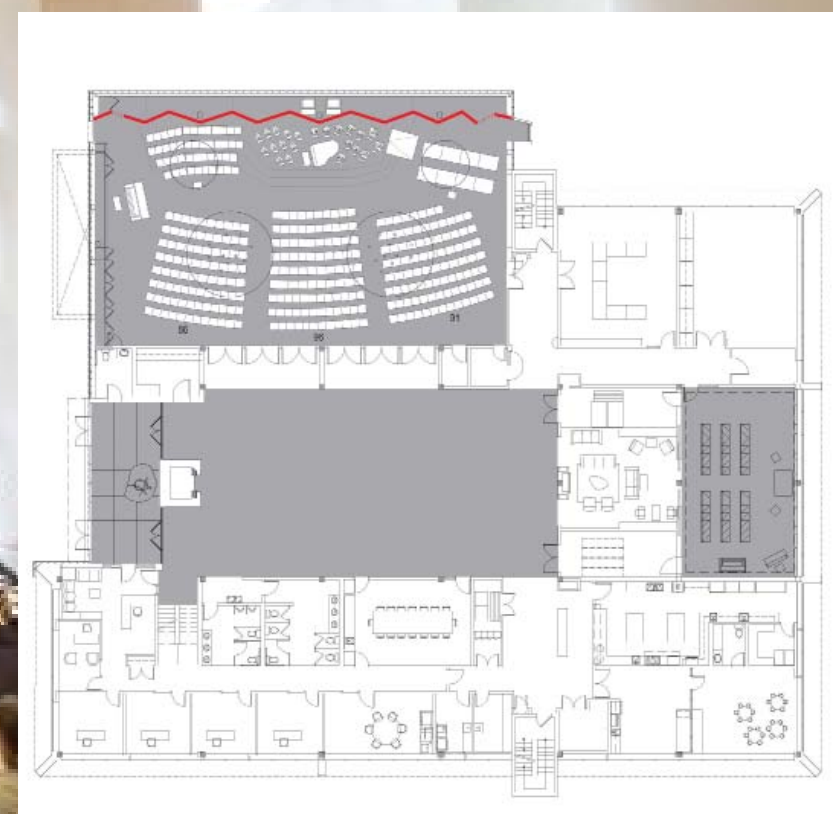


CLTHouse  
atelierjones 2015 Seattle, WA



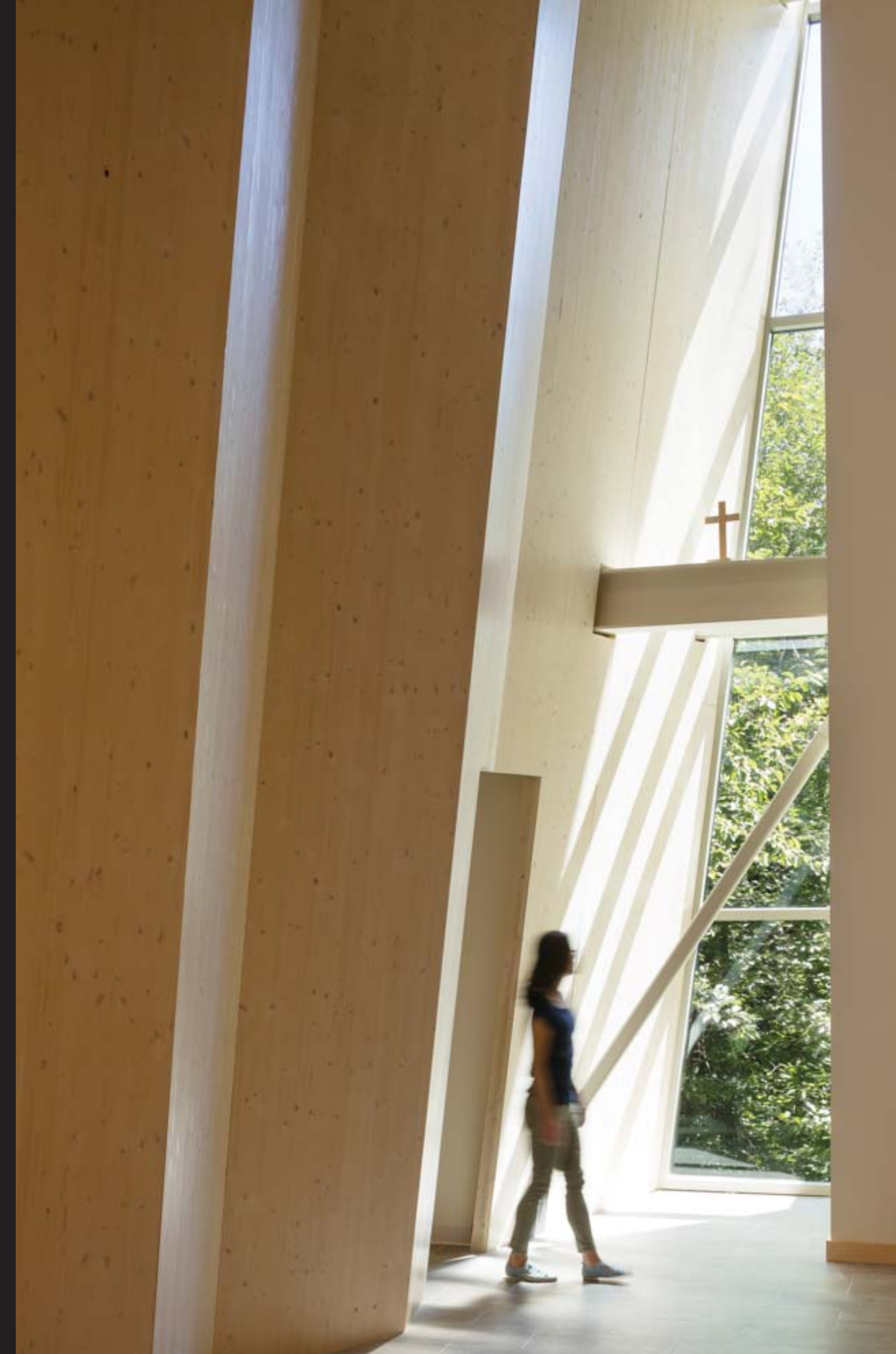






CLT Church  
atelierjones 2016 Bellevue, WA



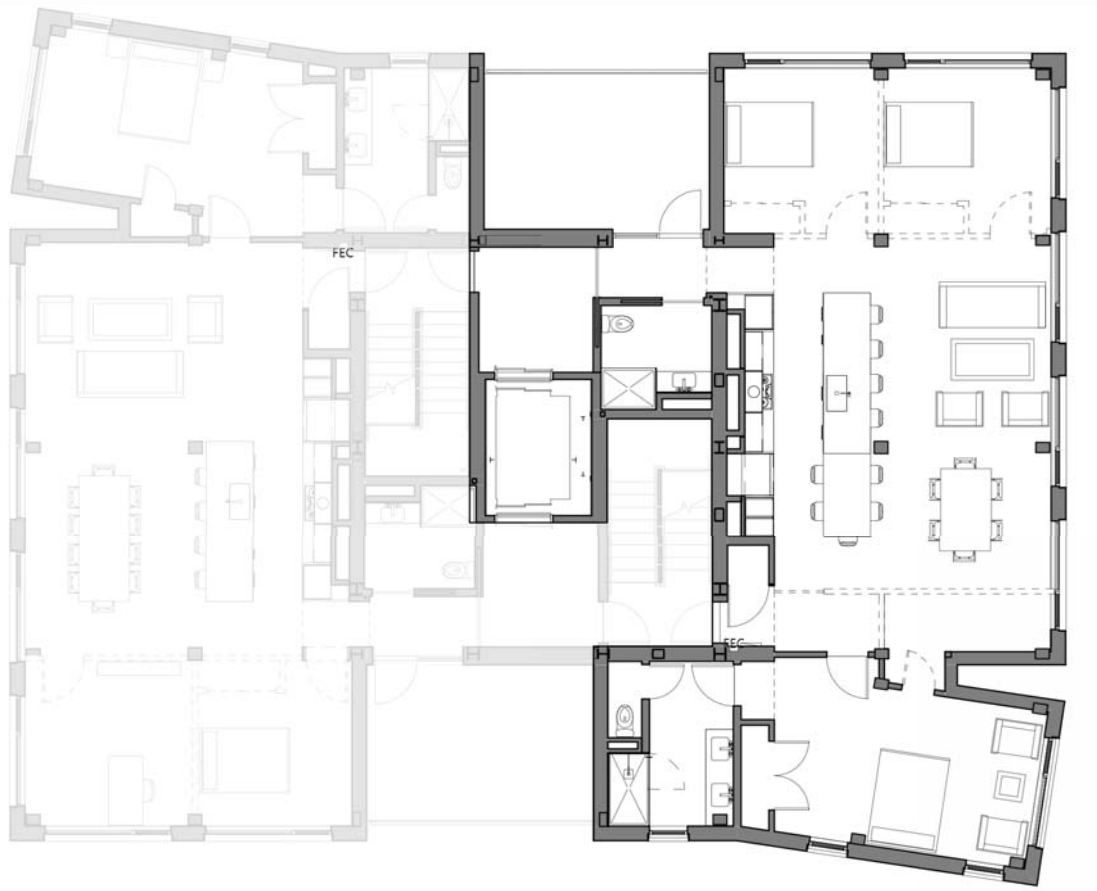






CLTSchools  
atelierjones/NAC 2017 Wapato, WA





**Carbon-12**  
eight story residential building  
PATH Architecture 2018 Portland, OR





**First Tech Credit Union**  
five-story 155,000 SF office building  
Hacker Architects 2018 Hillsboro, OR





# architect as advocate

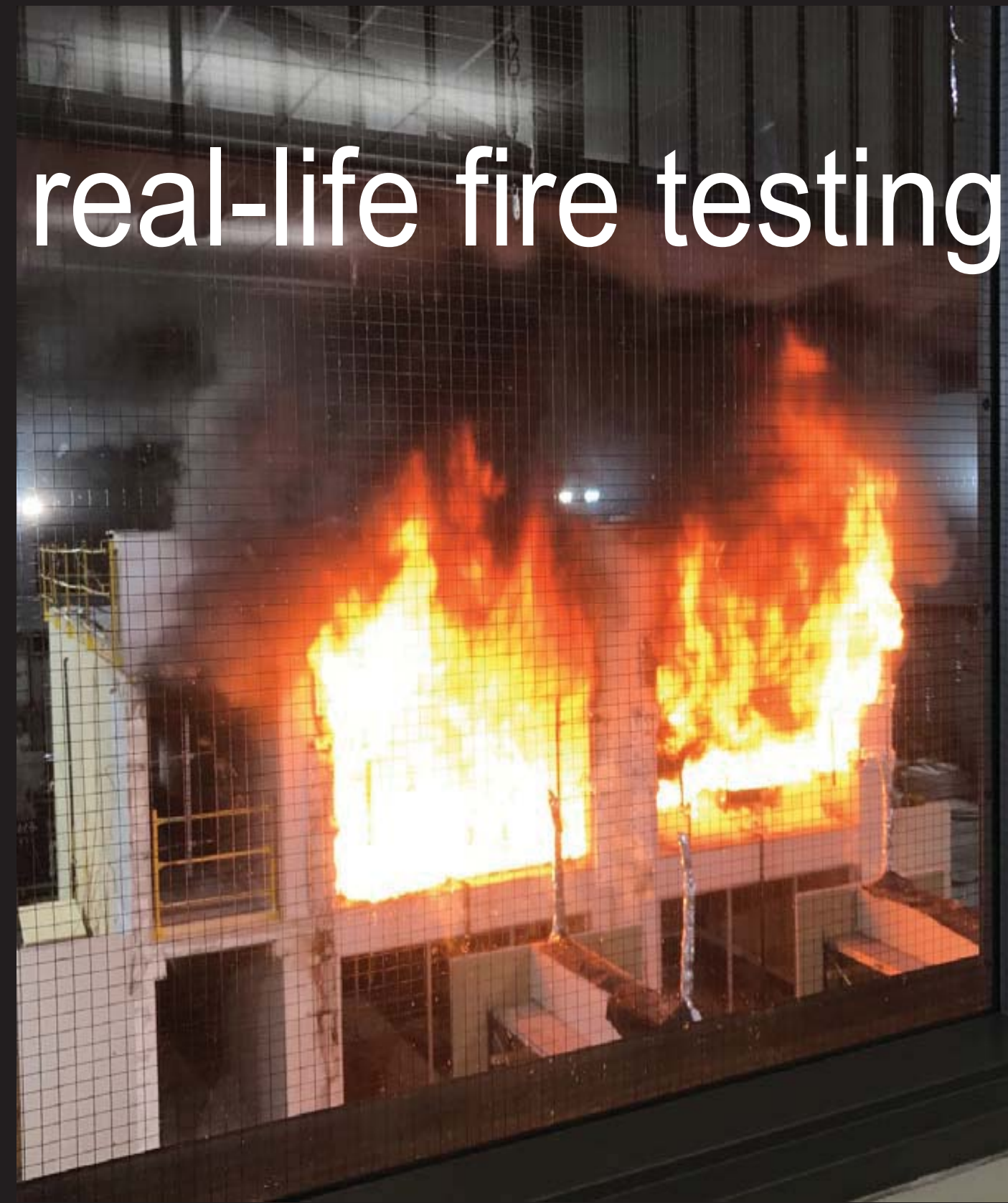




balanced committee

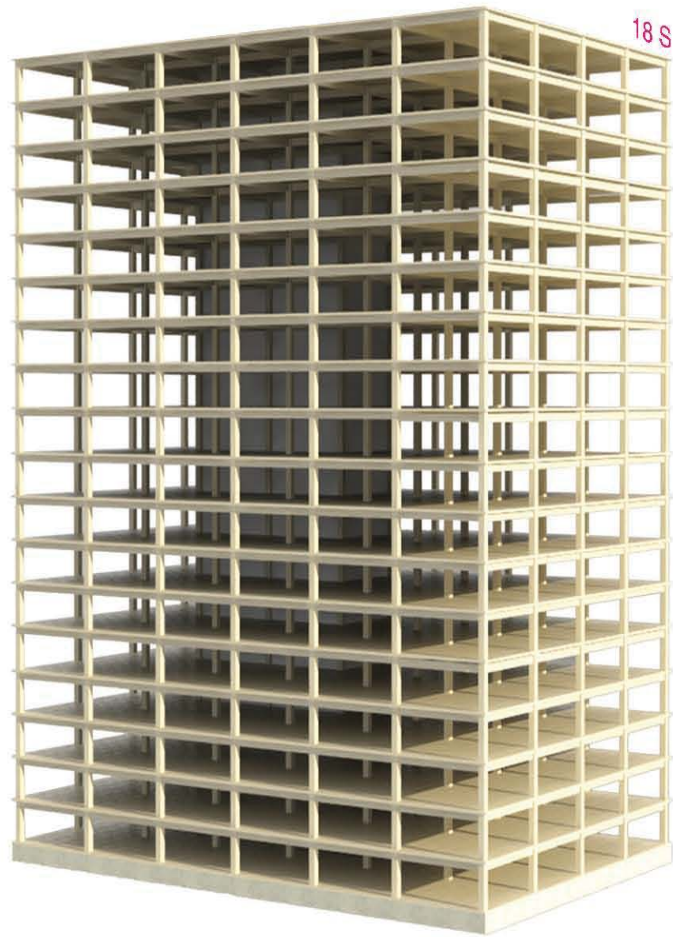


# real-life fire testing





# new building codes



18 STORIES  
BUILDING HEIGHT 270'  
ALLOWABLE BUILDING AREA 972,000 SF  
AVERAGE AREA PER STORY 54,000SF

TYPE IV-A



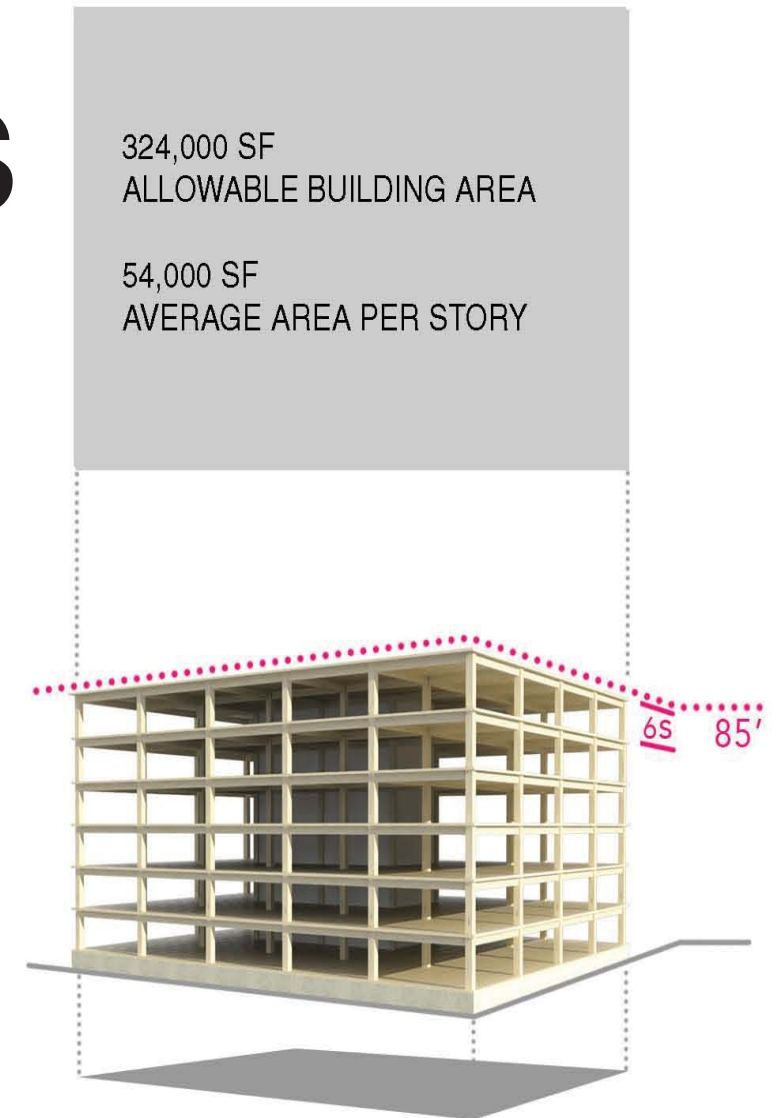
12 STORIES  
BUILDING HEIGHT 180 FT  
ALLOWABLE BUILDING AREA 648,000 SF  
AVERAGE AREA PER STORY 54,000SF

TYPE IV-B



9 STORIES  
BUILDING HEIGHT 85'  
ALLOWABLE BUILDING AREA 405,000 SF  
AVERAGE AREA PER STORY 45,000 SF

TYPE IV-C



TYPE IV- HT

IBC 2015

BUSINESS OCCUPANCY [GROUP B]

atelierjones, llc  
architecture | ecodesign | planning

\*BUILDING FLOOR-TO-FLOOR HEIGHTS ARE SHOWN AT 12'-0" FOR ALL EXAMPLES FOR CLARITY IN COMPARISON BETWEEN 2015 TO 2021 IBC CODES.





protection: type 4A



type 4C



# national action



2018 COMMITTEE ACTION HEARINGS  
GROUP A CODES COLUMBUS

Group A Committee Action Hearings

**IBC-General**

G108-18

Next: G89-18


Track 2: M49-18



systemic change







# MASS TIMBER: INVESTIGATIONS

in the work of  
**ATELIERJONES**

EESI MASS TIMBER  
CONGRESSIONAL  
BRIEFING  
WASHINGTON, DC  
October 23, 2018

**SUSAN JONES, FAIA**

atelierjones, llc

911 Pine Street  
Floor Two  
Seattle, Washington 98101  
T: 206.624.9966  
F: 206.624.9957  
[www.atelierjones.com](http://www.atelierjones.com)