



EXTREME HEAT & PUBLIC HEALTH

**SONAL JESSEL, MPH
DIRECTOR OF POLICY**





HEAT WAVES ARE INCREASING IN

SEVERITY

FREQUENCY

DURATION

...& WE HAVE THE URBAN HEAT ISLAND EFFECT



Cooling Season

New York City has set out to protect people — and the planet — from the deadliest disaster: heat.

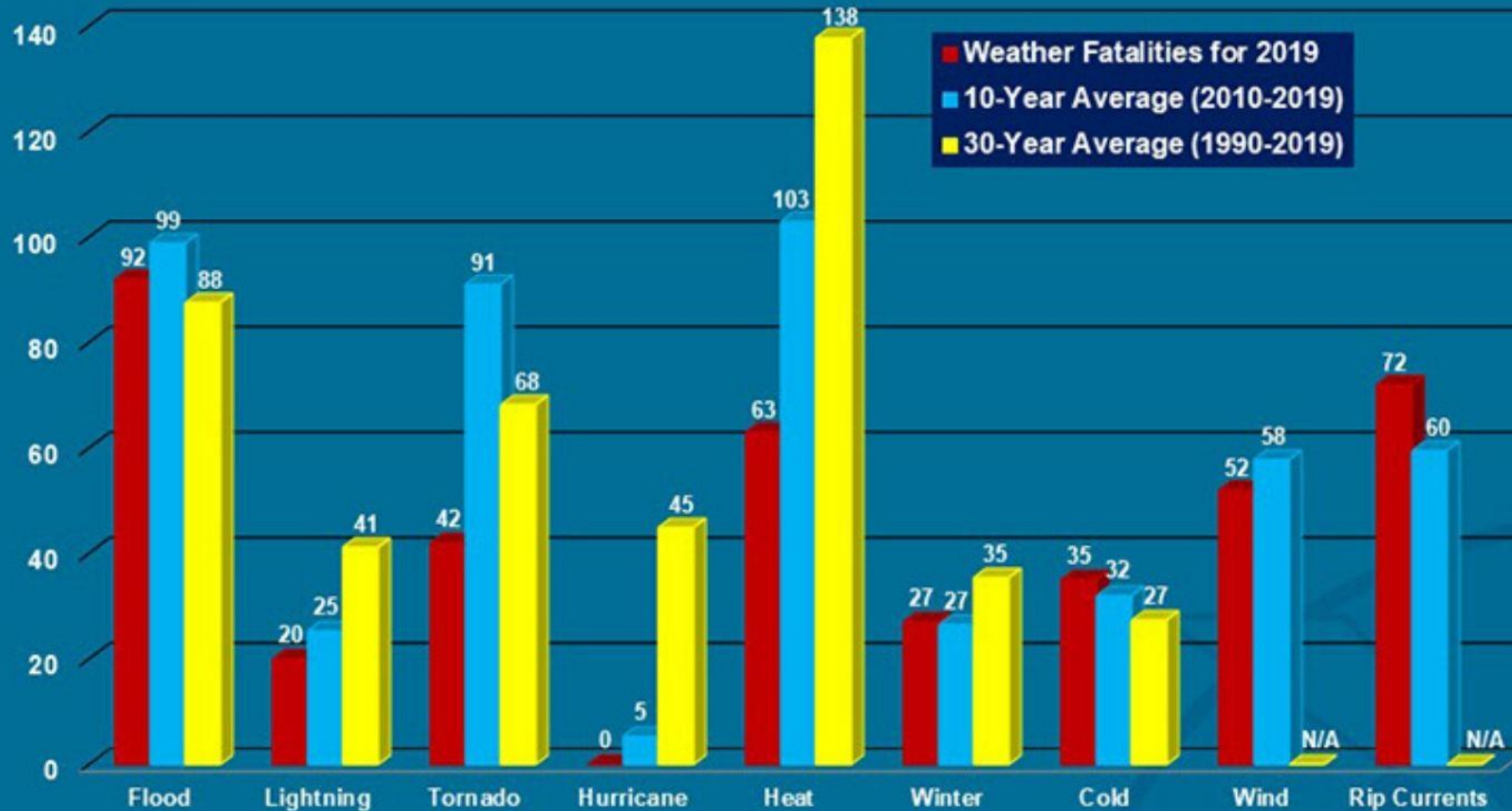
By [Kia Keabe](#) on Aug 13, 2019



**"THE ANNUAL MEAN AIR
TEMPERATURE OF A CITY
WITH 1 MILLION PEOPLE
OR MORE CAN BE 1.8–
5.4°F (1–3°C) WARMER
THAN ITS
SURROUNDINGS" (EPA)**



Weather Fatalities 2019



**THIS GRAPH DOES
NOT TELL THE
WHOLE STORY!**

"WE ARE IN THE SAME STORM, BUT NOT ALL IN THE SAME BOAT"



WHO'S ESPECIALLY AT-RISK TO EXTREME HEAT IMPACTS?

- Older adults
- Children
- People with chronic illness
- Pregnant people
- Outdoor workers





Image from: eclosh.com

WHO'S ESPECIALLY AT-RISK TO EXTREME HEAT IMPACTS?

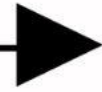
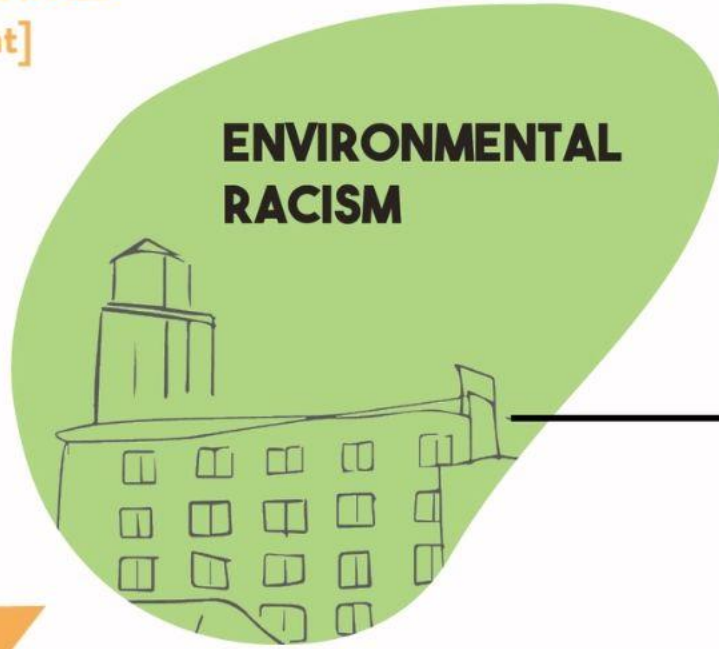
- Older adults
- Children
- People with chronic illness
- Outdoor workers

...but also people who

- live in older, poorly maintained apartment buildings;
 - live in crowded apartments with intergenerational living;
 - live in neighborhoods with less green space access,
 - live in neighborhoods with more air pollution from buildings and industrial sites; and
 - been exposed to air pollution across the lifespan
 - stretch their resilience and their means across many hardships, such as food, rent, chronic illness, immigration concerns, and more,
-and it is all due to historical and systematic (environmental) racism



CLIMATE CHANGE
[Extreme heat]



**PEOPLE ARE STAYING AT HOME MORE THIS
SUMMER.**

Address energy insecurity

The inability to adequately meet basic household energy needs due to the interplay of physical conditions of housing, household energy costs and energy-related coping strategies.

EVERYONE HAS A RIGHT TO A HEALTHY & COOL HOME

WHAT MAKES A HOME ENERGY INSECURE?

Planned brown outs in low income communities of color

The wall insulation retains heat, so your home stays hot for days after a heat wave

Short periods of utility failures, due to increased usage from air conditioners

Your landlord does not address maintenance issues like holes, cracks, leaks

Choosing between turning your air conditioning on, or your oxygen machine

WHAT MAKES A HOME ENERGY SECURE?

A home that is well cared for by the landlord

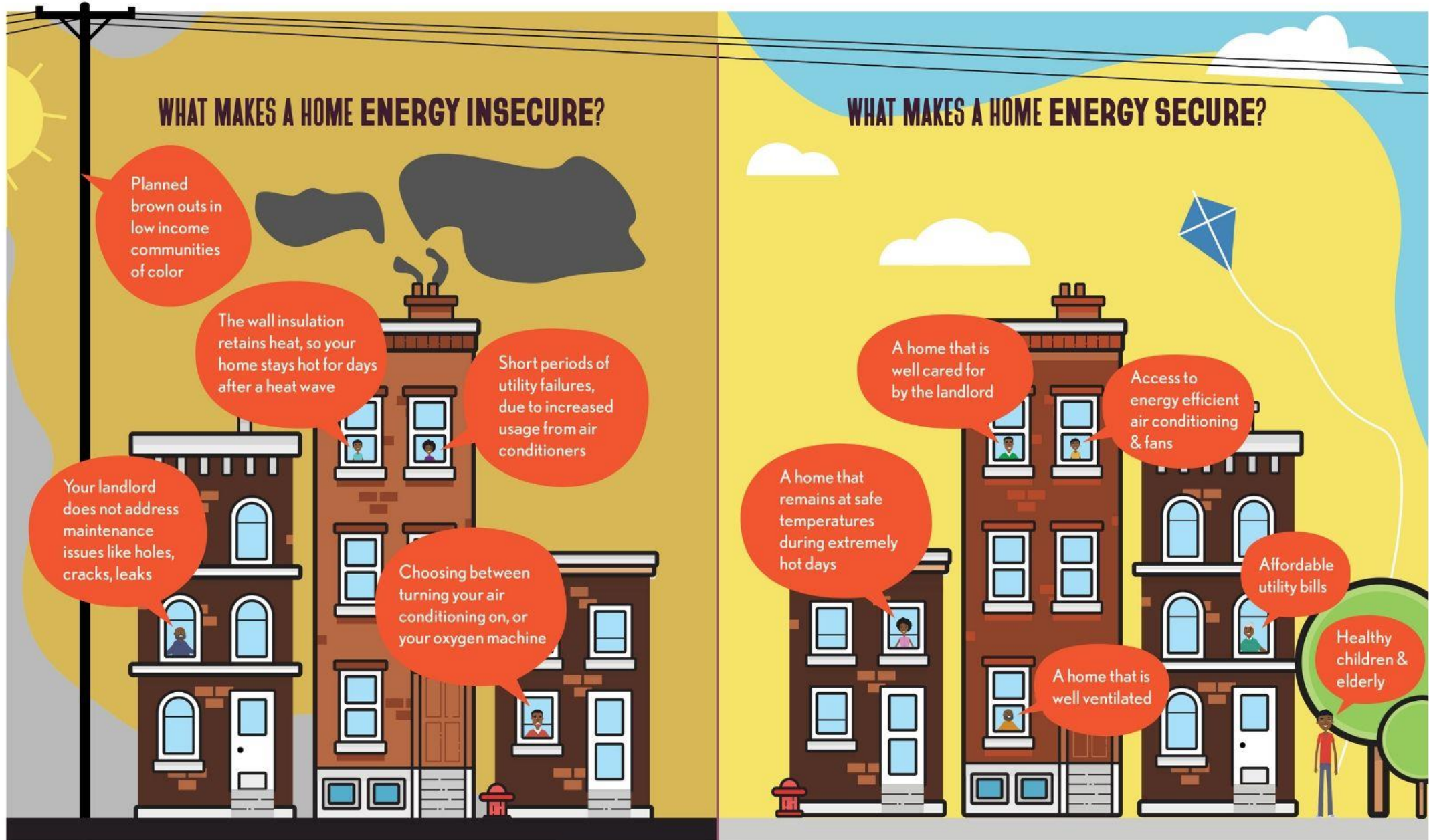
Access to energy efficient air conditioning & fans

A home that remains at safe temperatures during extremely hot days

Affordable utility bills

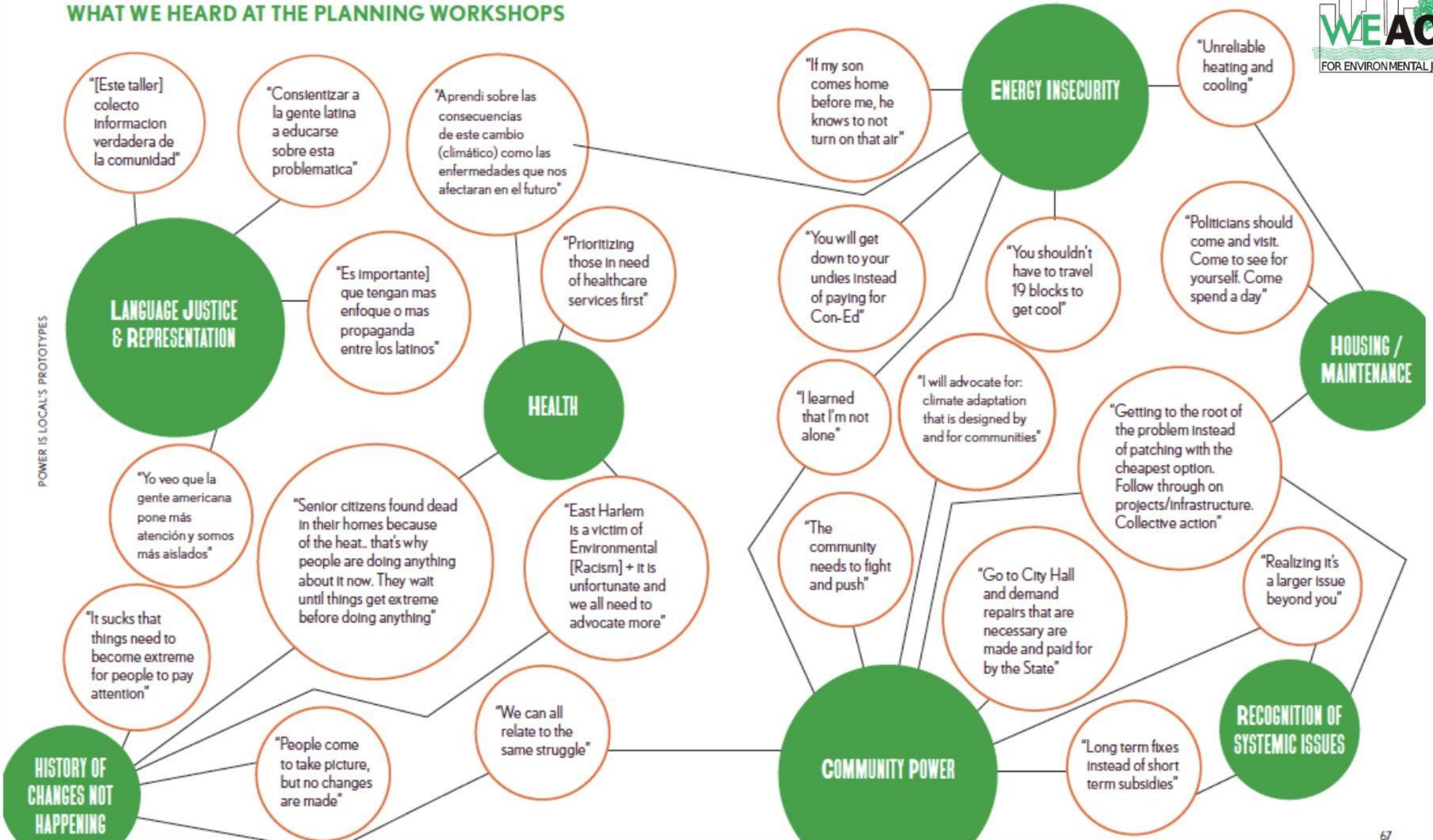
A home that is well ventilated

Healthy children & elderly



WHAT WE HEARD AT THE PLANNING WORKSHOPS

POWER IS LOCAL'S PROTOTYPES



-
- Long Term Solutions
 - Short Term Solutions & Emergency Response



EXTREME HEAT POLICY AGENDA 2022

ILLUSTRATION BY SEAN MCCABE



@Sonal360_

@weact4ej

www.weact.org/heat

THANK

YOU