



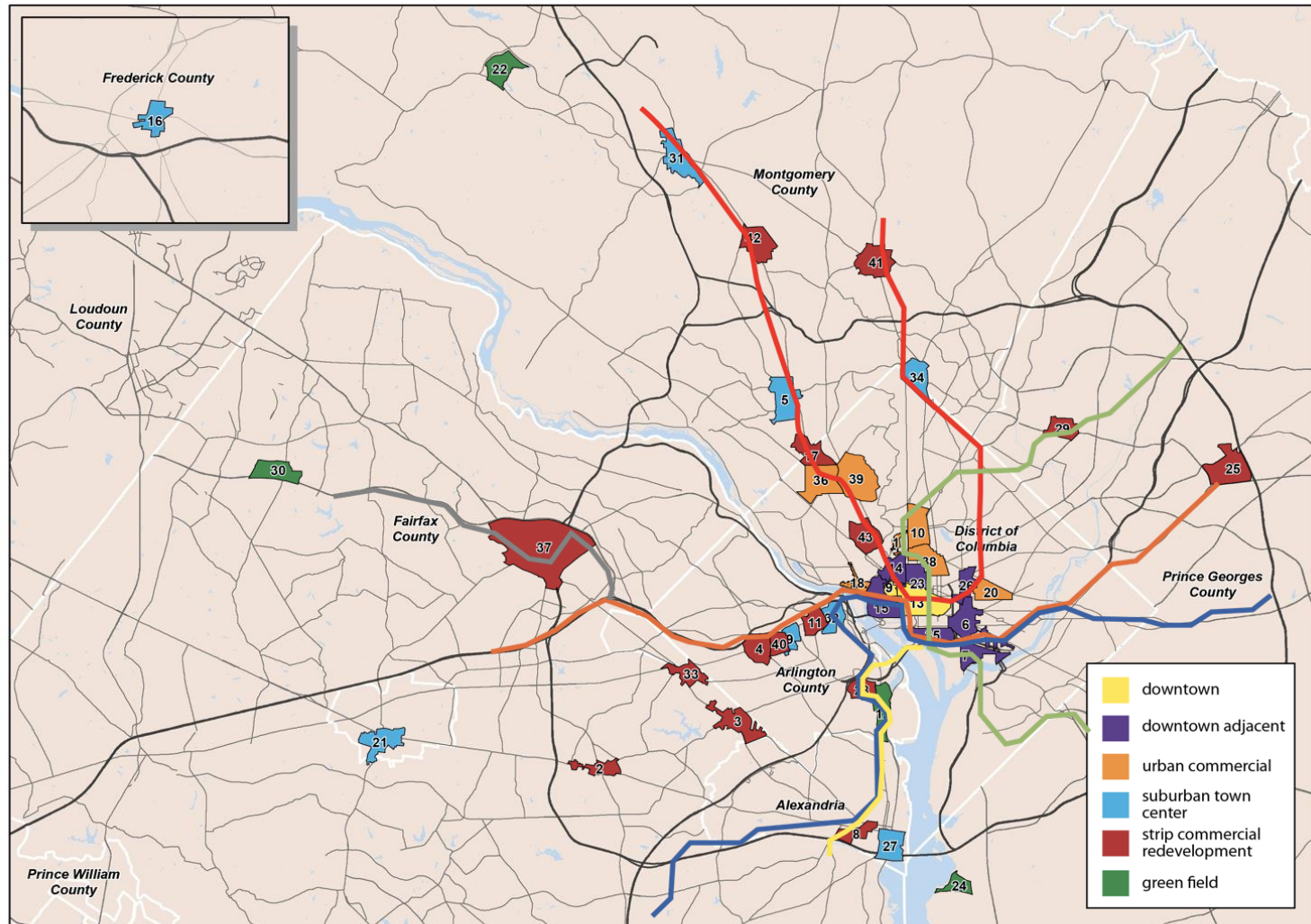
**Washington Metropolitan Area Transit Authority**

# Transit and Economic Competitiveness

WMATA Office of Planning  
May 2015



# The Region Relies on Metro's Success



Source: George Washington University





# The Region Relies on Metro's Success

<b>Jurisdiction</b>	<b>Under Construct ion (SF, Millions)</b>	<b>Proposed (SF, Millions)</b>	<b>Total (SF, Millions)</b>	<b>Appx. Value* (\$2014)</b>	<b>Annual Property Tax Revenue* (\$2014)</b>
<b>DC</b>	9.3	45	54.3	\$24.4 B	\$305.4 M
<b>Maryland</b>	4.7	15	19.7	\$6.9 B	\$89.6 M
<b>Virginia</b>	6.7	24.5	31.2	\$9.4 B	\$121.7 M
<b>Total</b>	20.7	84.5	105.2	\$40.7 B	\$516.8 M

Source: Jones Lang LaSalle, 2014; \*WMATA Office of Planning Preliminary Analysis, 2014





# The Region Relies on Metro's Success

## Tysons Corner | Proposed development



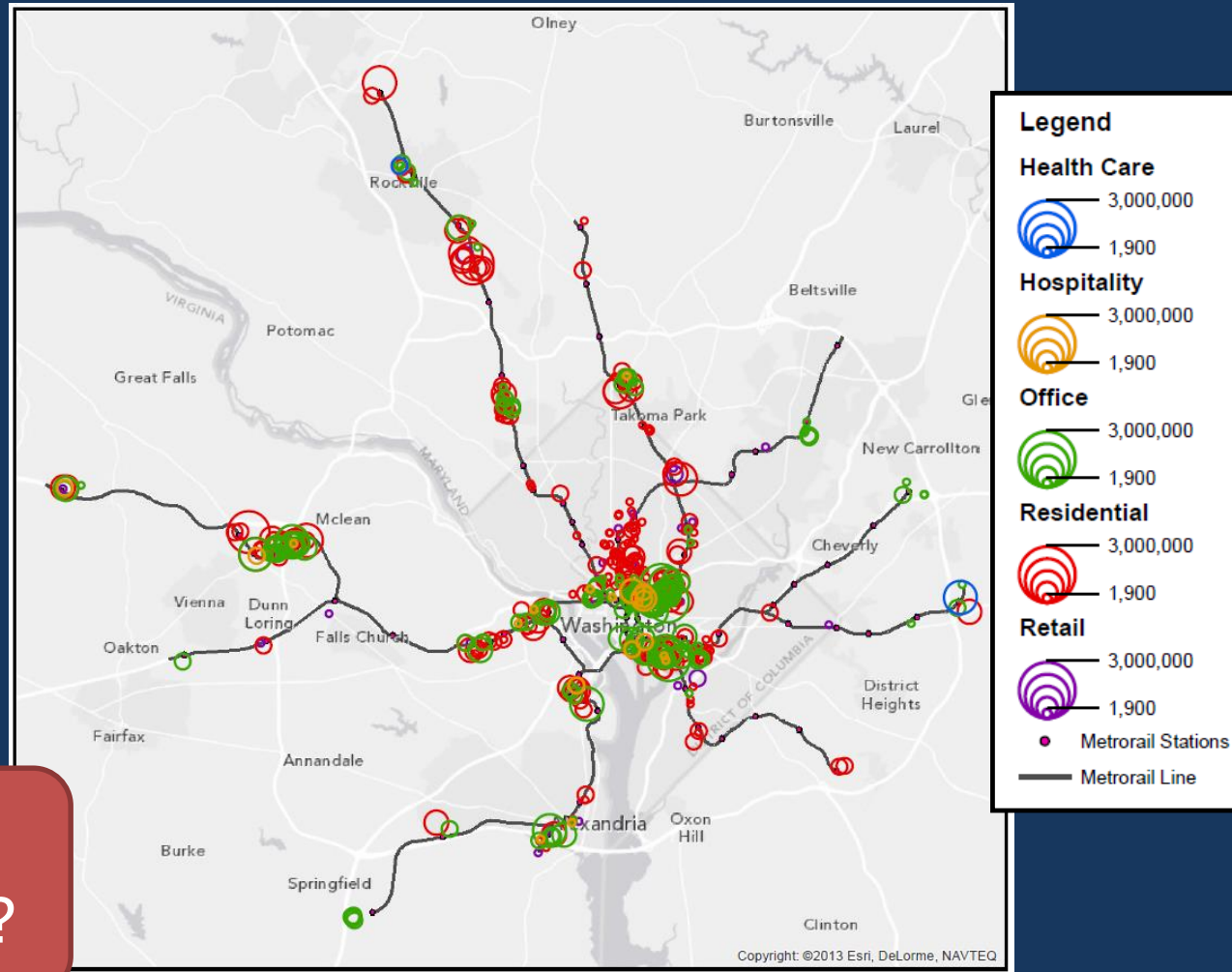




# TOD is Coming: The Development Pipeline

- Nearly 100 million ft<sup>2</sup> under construction or planned
- 86% of office projects underway are near Metrorail

How will this impact Metrorail?





**Washington Metropolitan Area Transit Authority**

# Transit and Economic Competitiveness

WMATA Office of Planning  
May 2015