



ALOTERRA

Specialty Fiber Manufacturing

Aloterrallc.com

Scott Coye-Huhn

713-412-5311

scoyehuhn@aloterrallc.com

BCAP Drives Investment In Rural America



Miscanthus Rhizomes



Planting Miscanthus Rhizomes

- ❑ **BCAP: Crop Subsidy, Land Rent, Matching Payments**
- ❑ **Innovation:** Perennial Crops Need Investment to Innovate.
- ❑ **Time:** Farmers Cannot Wait 3-5 Years to Generate Revenue. Neither Can Investors!
- ❑ **Critical Mass:** Private Market needs Reliable, Stable, and Consistent Raw Material Supply Chains.

Stable Supply Chains Enable:

- Private Market Investment in Manufacturing.
- Private Market Investment in R&D/Innovation/Patents.



Harvesting Miscanthus

Aloterra

Raw Material Supply



Product Development



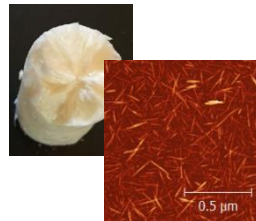
Absorbent



Pulp



Molded Fiber



Nano Cellulose



Other Fiber Products

Manufacturing

2014 – 10 FT



Ashtabula, OH

2015 – 8 FT
2019 – 12 FT



2015 – 52 FT
2019 – 250 FT



Ashtabula, OH

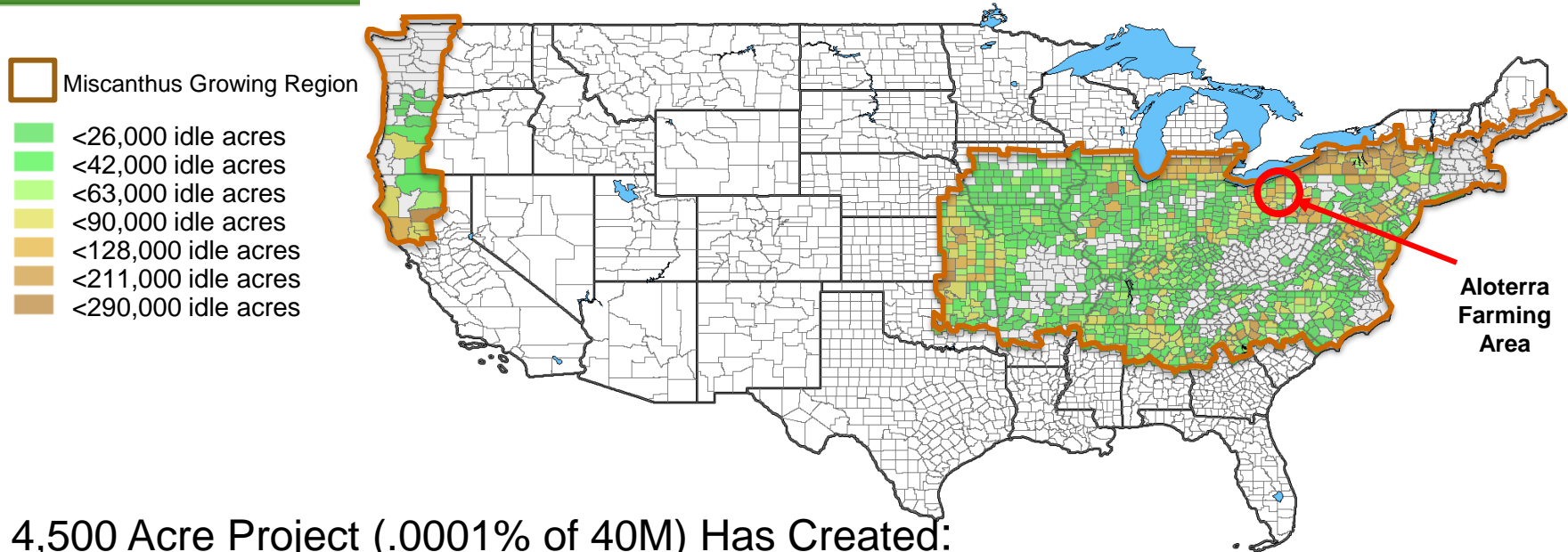
Argonne Nat'l Lab,
Univ. of Chicago,
and CWRU

Pilot 2020 – 25 FT



Other Products in Early Development

What can 40,000,000 Acres Do?



4,500 Acre Project (.0001% of 40M) Has Created:

- ❑ \$25M Private Market Investment was created by \$5M BCAP Investment.
- ❑ Not possible without USDA Rural Development loan guarantee of equipment, SBA Real Estate loan guarantee, JobsOhio loan, and CDBG loan (503 Corp).
- ❑ World's first facility producing pulp and packaging from Miscanthus. Facility is competing with China and Taiwan on price and quality!
- ❑ **125+ farming families and landowners** have a new source of revenue – stays in local economy.
- ❑ **70 FT Jobs** with Healthcare and 401K benefits – stays in local economy.
- ❑ 2018-2019 expansion from **6 to 30 manufacturing lines and approx. 250 more FT jobs!!!**
- ❑ 2019-2020 – World's first commercial scale Cellulosic Nanocrystal manufacturing facility.
- ❑ 1 Patent Granted. 3 Pending Patents.