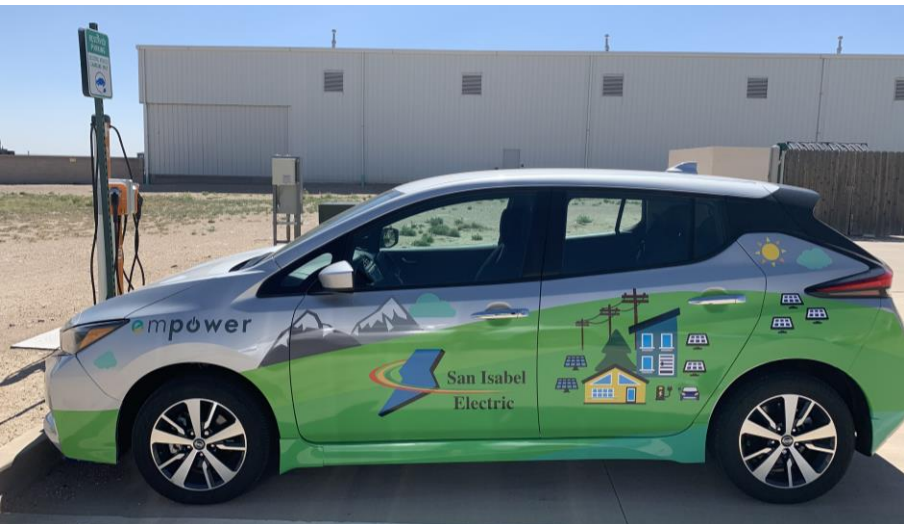


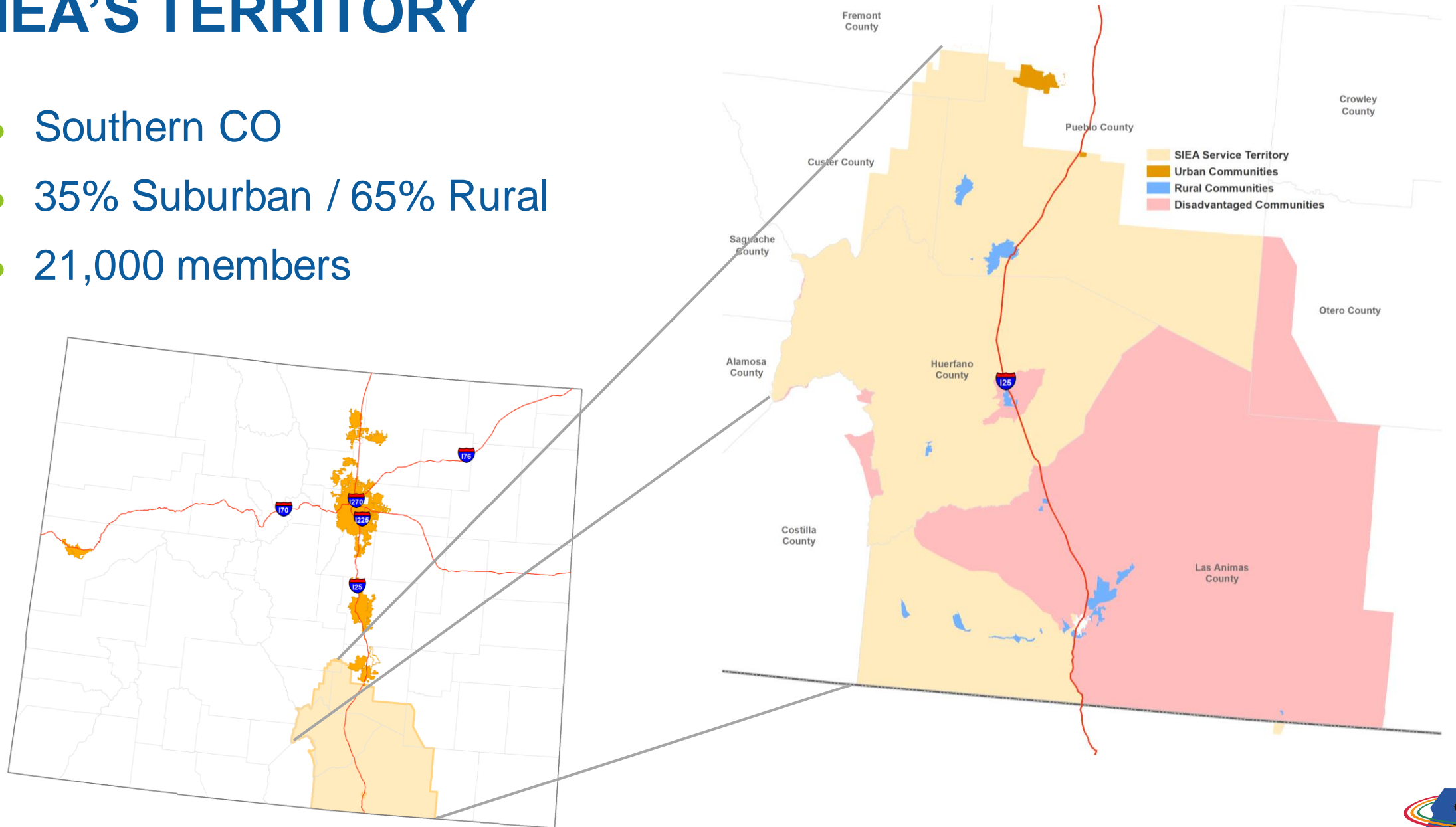


RURAL ELECTRIC COOPERATIVES & EV INFRASTRUCTURE



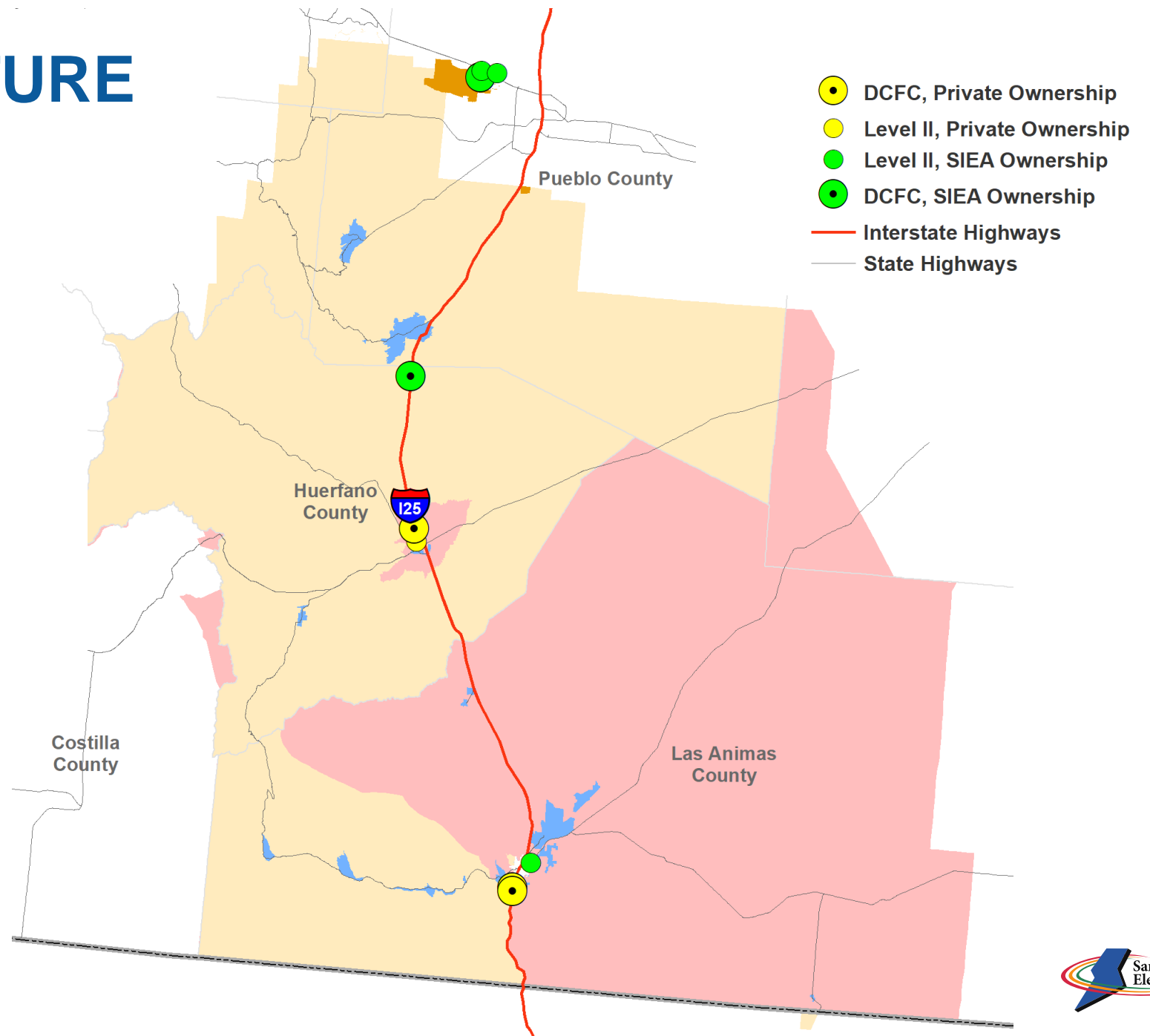
SIEA'S TERRITORY

- Southern CO
- 35% Suburban / 65% Rural
- 21,000 members



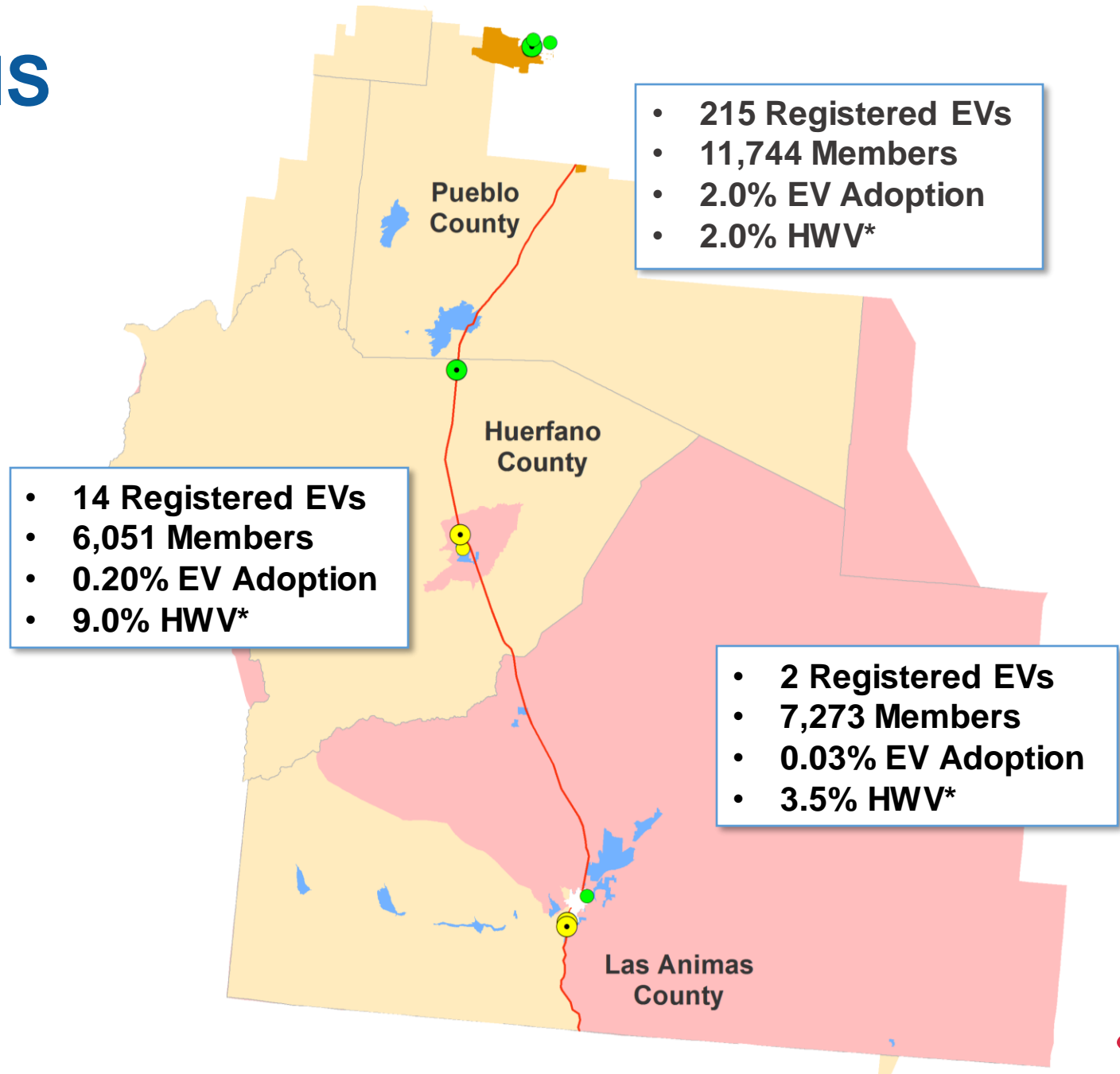
EV INFRASTRUCTURE

- 4 privately owned
 - 3 DCFC
 - 1 Level II
- 7 SIEA-owned
 - 2 DCFC
 - 5 Level II
- Future
 - State Parks
 - Scenic Highways
 - Local government
 - Transit agencies



EV REGISTRATIONS

- Low adoption in rural areas
 - 1% territory-wide
- Growth potential of
- High AADT along interstate and some state highways



*Households Without Vehicle

EV INFRASTRUCTURE FUNDING

- State grants
- G&T grants
- Community partnerships



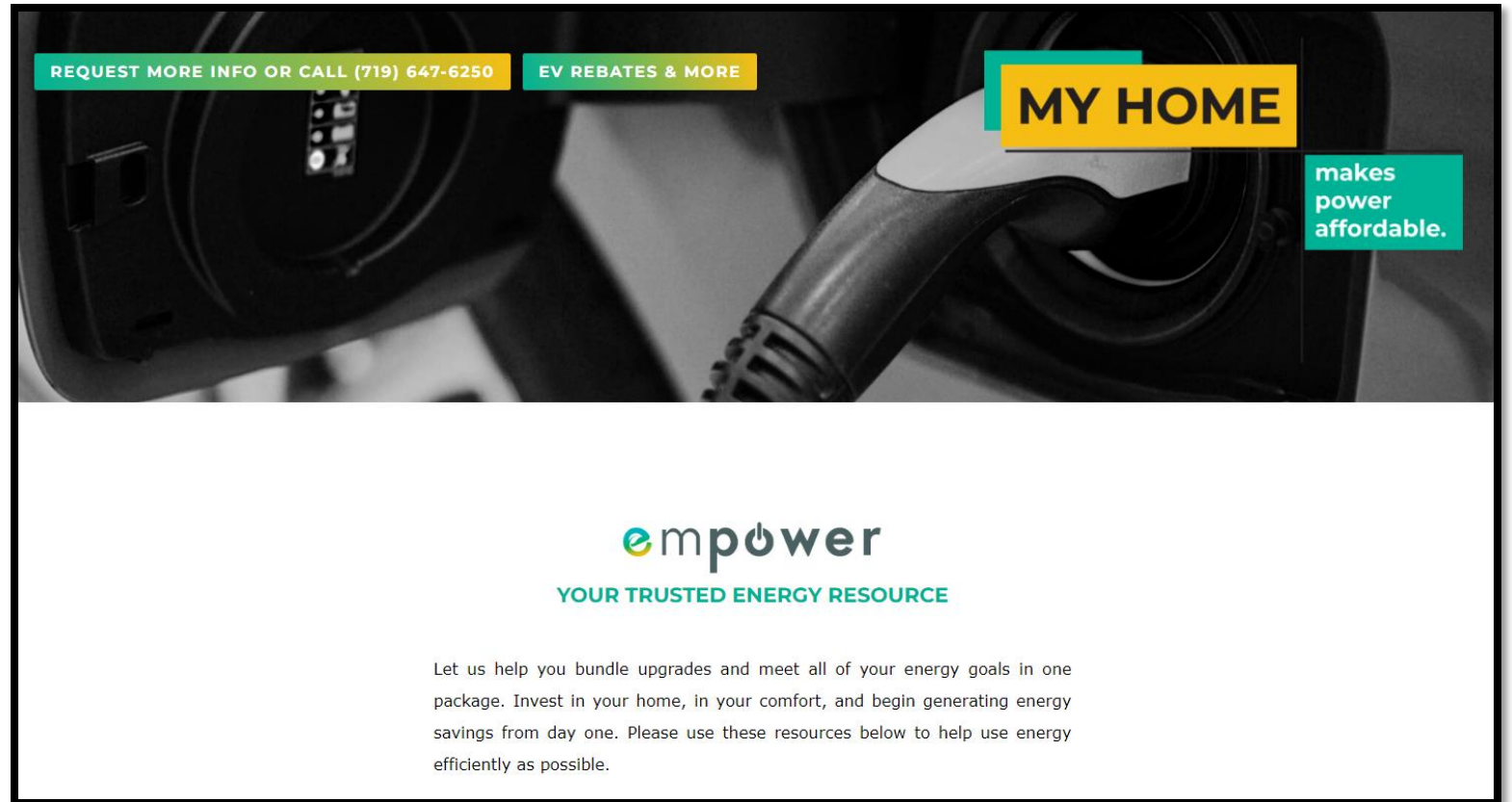
RESIDENTIAL CHARGING



- Free with EV ownership and TOU
- Co-op payback of ~2 years
- RESP on-bill financing

RESIDENTIAL CHARGING

- Empower as one-stop shop
 - Assessment
 - Project Management
 - Financing
- EV charging and solar as EE gateway
- \$3.8 million in affordable on-bill financing



REQUEST MORE INFO OR CALL (719) 647-6250

EV REBATES & MORE

MY HOME

makes power affordable.

empower
YOUR TRUSTED ENERGY RESOURCE

Let us help you bundle upgrades and meet all of your energy goals in one package. Invest in your home, in your comfort, and begin generating energy savings from day one. Please use these resources below to help use energy efficiently as possible.

REC OPPORTUNITIES

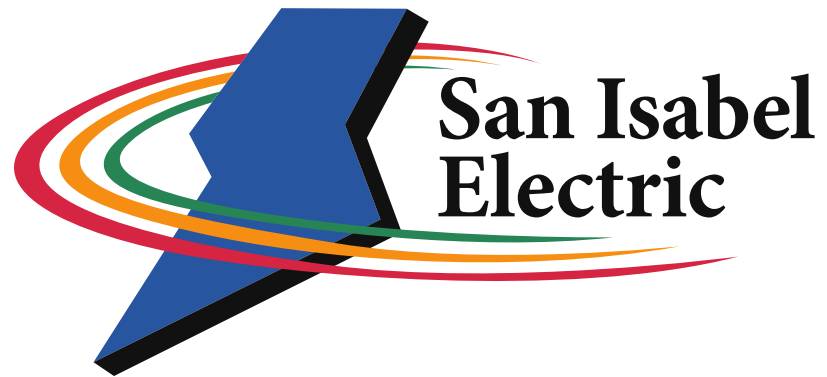


- Load growth
- Load management
- Economic development
- Member engagement

REC CONSIDERATIONS

- Affordable connection & grid capacity
- Peak contribution
- Payback
- “Charging deserts”
- Coordination
- Equity
- Maintenance
- Software subscriptions





Laura Getts
Business Development Manager
San Isabel Electric Association
Laura.Getts@siea.com