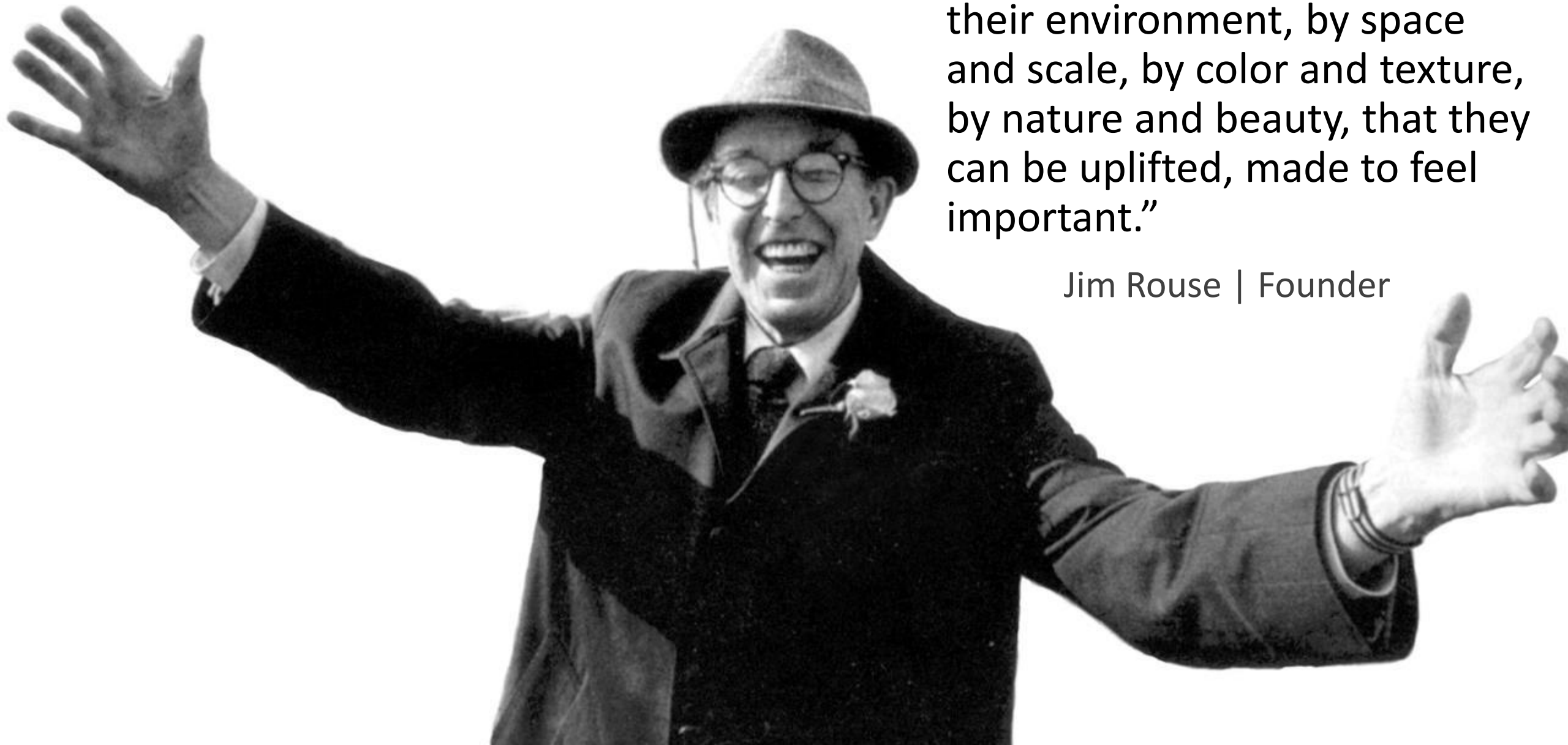




2015 Enterprise Green Communities Criteria

Krista Egger
Enterprise Green Communities



“We believe, because it is true, that people are affected by their environment, by space and scale, by color and texture, by nature and beauty, that they can be uplifted, made to feel important.”

Jim Rouse | Founder

Enterprise Green Communities is transforming the way America thinks about, designs, builds, and rehabilitates affordable housing.

Green building integrates materials and methods that promote **environmental quality, economic vitality, and social benefits** through design, construction and operations of the built environment.

Enterprise Green Communities aligns affordable housing investment strategies with environmentally responsive building practices.

Integrative Design



**Location +
Neighborhood Fabric**



**Operations, Maintenance
+ Resident Engagement**



Site Improvements

**Healthy Living
Environment**



Materials



Water Conservation



Energy Efficiency

Programmatic Requirements

meet mandatory criteria



Certification

PreBuild

(prior to construction)

- Project overview
- Intended methods
- Upload: site plan, context map, energy modeling form, Category 8 outlines, other supplemental documents as necessary

PostBuild

(within 60 days of construction completion)

- Update information
- Upload: project photos & release, Category 8 documents, utility access, other supplemental documents as necessary

All submittals reviewed within 30 days



1. Integrative Design

1.1a Goal Setting

1.1b Criteria Documentation

1.1c Designing for Project Performance

1.2a Resident Health and Wellbeing: Design for Health

1.2b Resident Health and Wellbeing: Health Action Plan

1.3a Resilient Communities: Design for Resilience

1.3b Resilient Communities: Multi-Hazard Risk /
Vulnerability Assessment





2. Location + Neighborhood Fabric

2.1 Sensitive Site Protection

2.3 Compact Development

2.5 Proximity to Services

2.8 Access to Transportation

2.10 Passive Solar Heating/Cooling

2.12 Access to Fresh, Local Foods

**2.14 Local Economic Development and
Community Wealth Creation**



3. Site Improvements

3.1 Environmental Remediation

3.2 Erosion and Sedimentation Control

3.3 Low-Impact Development

3.4 Landscaping

3.5a/b Efficient Irrigation and Water Reuse

3.6 Surface Stormwater Management

3.7 Reducing Heat-Island Effect: Paving





4. Water Conservation

4.1 Water-Conserving Fixtures

4.2 Advanced Water Conservation

4.3 Leaks & Water Metering

4.4 Efficient Plumbing Layout and Design

4.5 Water Reuse

4.6 Access to Potable Water during
Emergencies



5. Energy Efficiency

5.1 Building Performance Standard

- a. New Construction, single family and low-rise MF
- b. New Construction, mid-rise and high-rise MF
- c. Sub and Mod Rehab, single family and low-rise MF
- d. Sub and Mod Rehab, mid-rise and high-rise MF

**partner with HERS Rater / energy professional
prior to, and throughout, construction

**sampling protocol available for large projects

6. Materials

6.1 Low / No VOC Paints, Coatings, and Primers

6.2 Low / No VOC Adhesives and Sealants

6.6 Composite Woods (Low / No Formaldehyde)

6.7a Environmentally Preferable Flooring

6.7b Environmentally Preferable Flooring
Throughout Building

6.10 Asthmagen-free Materials

6.11 Reduced Heat-Island Effect: Roofing

6.12 Construction Waste Management

6.13 Building Site





7. Healthy Living Environments

7.1 Ventilation

7.10 Integrated Pest Management

7.11 Beyond ADA: Universal Design

7.12 Active Design: Promoting Physical Activity within the Building

7.13 Active Design: Staircases and Building Circulation

7.16 Smoke-Free Building



8. Operations, Maintenance and Resident Engagement

8.1 Building Maintenance Manual (all MF projects)

8.2 Emergency Maintenance Manual

8.3 Resident Manual

8.4 Resident and Property Manager Orientation

8.5 / 8.6 Project Data Collection and Monitoring System



Sustainable AND Affordable



MATERIALS

Integrative Design



**Location +
Neighborhood Fabric**



**Operations, Maintenance
+ Resident Engagement**



Site Improvements

**Healthy Living
Environment**



Water Conservation

Materials



Energy Efficiency

Application





Our clear, cost-effective framework for all affordable Housing. >>



Customizable resources to aid your integrative design plans. >>



Mobilize residents to help maximize energy-saving efforts. >>



Green efforts continue after construction ends! >>



Discover new research and practical insights in green building and affordable housing. >>



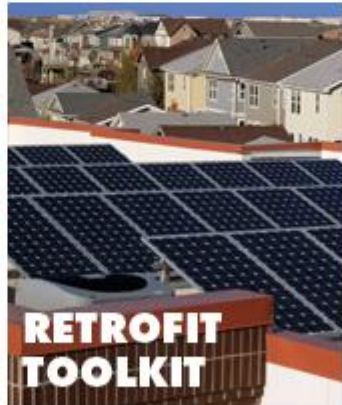
Download one of over 30 webinars we've hosted with leaders and experts in green affordable housing >>



Editable specs in MasterSpec format that correspond to the 2015 Criteria. >>



Tools to help housing organizations prepare for and respond to disasters >>



Upgrade existing multifamily buildings with energy-efficient features and systems. >>



Experts ready to address your affordable housing technical needs. >>



Krista Egger
Enterprise Green Communities