



Toward Tree Equity

How Cities are using tree canopy to
advance equitable climate action

May 23, 2024

American Forests is the
oldest national nonprofit
conservation organization in
the United States.

Our Roots Run Deep

We Need Tree Equity in Cities

Neighborhoods with the lowest poverty rates have **double the tree cover per person** and are **6 degrees cooler** than neighborhoods with the highest.

Neighborhoods with the fewest residents of color have **four times more tree cover per person** and are **13 degrees cooler** than neighborhoods with the most.

American Forests, Tree Equity Score, 2024.



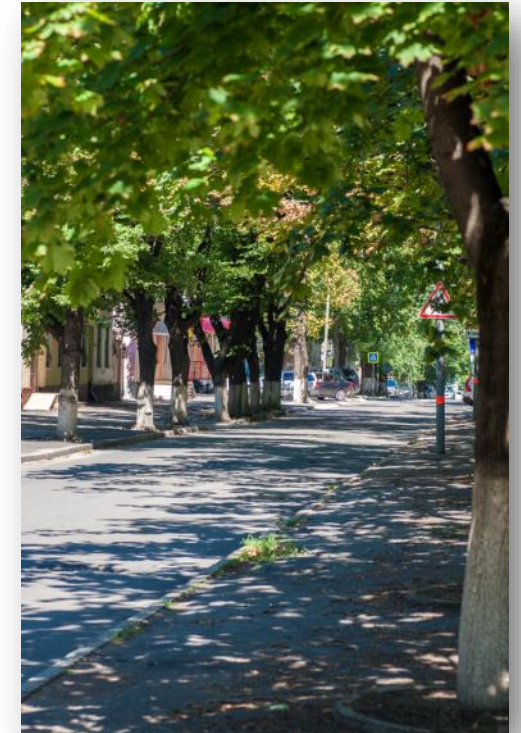
Heat Risk: Lower temperatures by up to 10 deg F at street level

Air Quality: Avoid millions incidents of respiratory illness annually



Sequestration: 129M Mt/CO₂e

Energy Savings: 7.2% average reduction in home heating & cooling, saving homeowners \$\$\$\$



Tree Equity = Climate Action



2nd World Forum on Urban Forests

Washington DC, 2023

Carbon Negative and Cost-Effective Cooling



Sequestration: Trees in U.S. cities & towns capture nearly 130 Million Mt/CO₂e/Year.

Energy Savings: Trees in U.S. cities & towns save 38.8 Million MWh & 246 MMBtus of energy use for heating and cooling.



American Forests created Tree Equity Score to help address damaging environmental inequities by prioritizing people-centered investment.

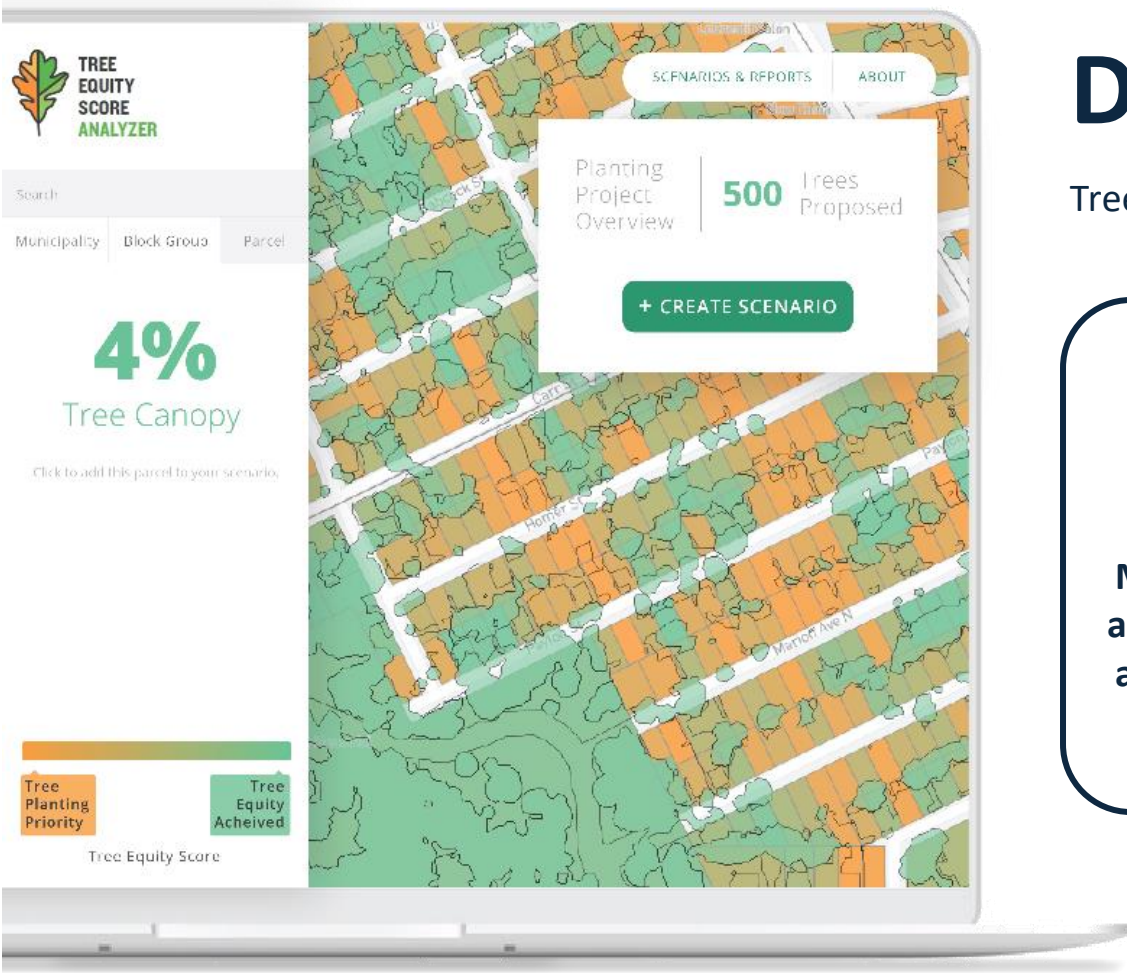
The score sets a national standard to assess how well cities are delivering tree canopy to all residents and to help make the case for investment in areas with the greatest need.

190,000 urban neighborhoods

12,000+ cities and town

80% of the population





Democratizing Data

Tree Equity Score is your toolkit to address inequitable access to urban trees



Make state-of-the-art Tree Equity data and tools available to all



Target meaningful investment in areas with the greatest need

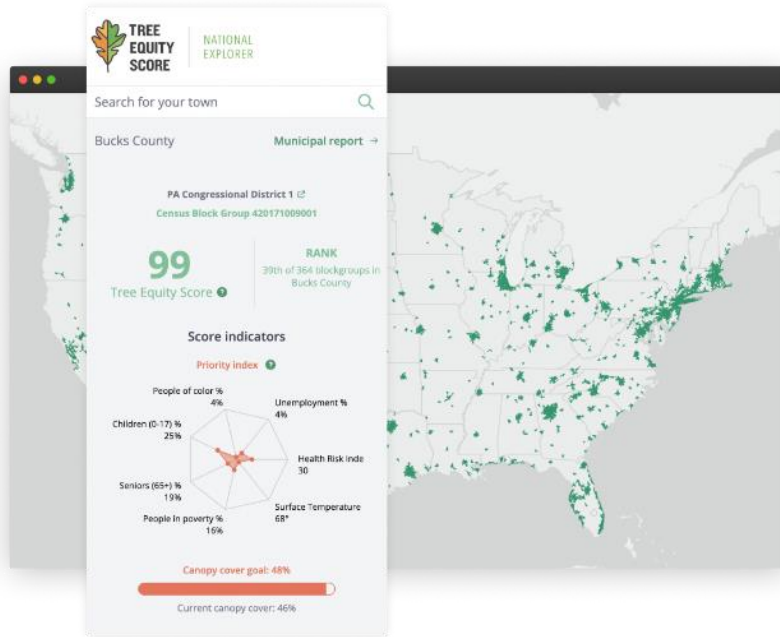


Build a community-led movement for lasting change



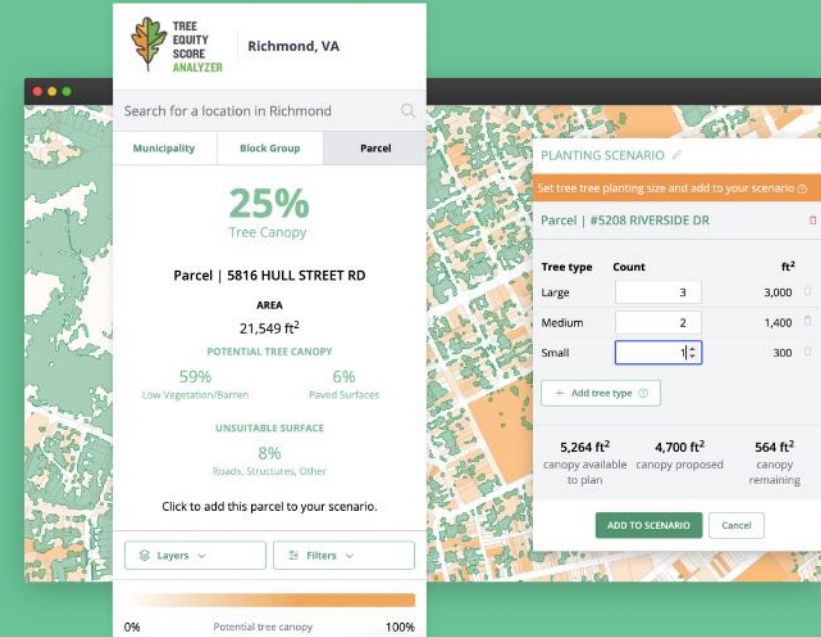
2nd World Forum on Urban Forests

Washington DC, 2023



Our flagship National Explorer makes Tree Equity Score available to all.

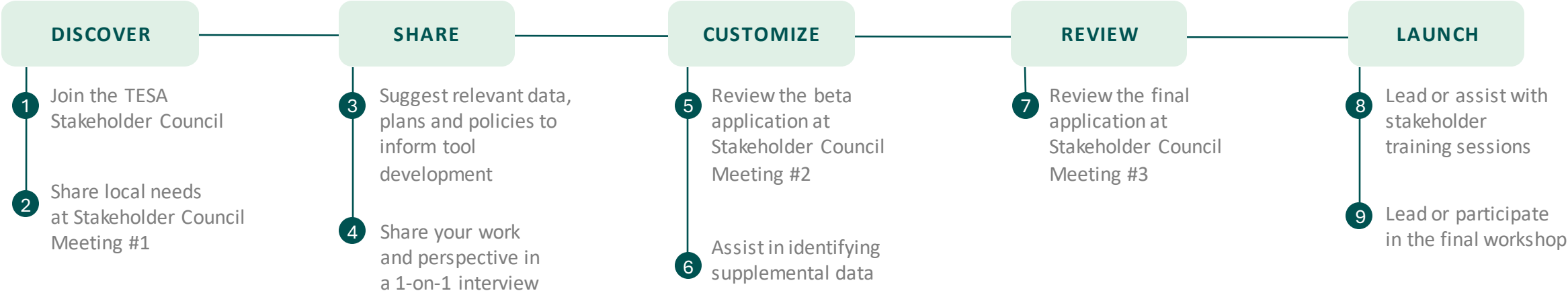
- Scores for 190,000+ urban block groups in the
- A national standard to support equity-first tree planting and investment.
- Neighborhood-level data; municipal and regional goal-setting.
- Communicate the positive impacts of trees.



Local Analyzers serve a single city or region to help users *shift* Tree Equity Scores.

- Data for all public and private properties.
- For each block group (neighborhood), set Tree Equity Score goals and estimate planting needs.
- Build property-level plans to shift scores. Track progress. Communicate the benefits of new and existing trees.
- Co-created with stakeholders; locally-tailored.

Every TESA is co-created with a local Stakeholder Council



Local
Government
Officials



Environmental
Justice
Organizations



Public Health
Officials



Environmental
Organizations



Housing, climate,
transportation, and other
urban forestry allies



Tree Care
Industry
Professionals



Advocates/
Community
Leaders



Social Justice
Organizations

What we do to advance Tree Equity

Creating the best Tools & Techniques

We've identified what communities need, invested in policy, planning, financing & planning tools, and have invited partners to help with the areas that we don't work in, to provide a holistic program model.

Building Careers & Opps

We've created education opportunities, employer best practices, pre-employment training opportunities and supported job retention in the forestry and tree care industries.

Funding a Movement

We've unlocked billions in public funding via federal policy efforts and local private and corporate dollars

Our \$40M Catalyst Fund will drive public and private \$ to new communities.

CLIMATE ADAPTATION ACTIONS FOR URBAN FORESTS AND HUMAN HEALTH



Table 5.—Tree species list developed to aid Rhode Island community forestry practitioners in selecting trees to reduce climate change vulnerability, reduce carbon dioxide in the atmosphere, and provide benefits to human health. It is meant to be a complement to other tree selection resources. Other factors may also need to be considered, such as aesthetics, local site conditions, wildlife value, or nursery availability. Some species may have climate and health benefits but may not be suitable for planting for other reasons, such as having invasive potential or susceptibility to pests or pathogens.

Scientific name	Common name	Climate vulnerability	Carbon benefit	Health benefit	Health disservices	Notes
<i>Abies balsamea</i>	Balsam fir	moderate-high	moderate	moderate-high	moderate	
<i>Acer campestre</i>	Hedge maple	low	low	low	moderate	can be invasive
<i>Acer ginnala</i>	Amur maple	moderate-high	low-moderate	moderate-high	moderate	can be invasive
<i>Acer griseum</i>	Paperbark maple	moderate	low	low-moderate	moderate-high	
<i>Acer negundo</i>	Boxelder	moderate-high	moderate	moderate	moderate	can be invasive
<i>Acer rubrum</i>	Red maple	moderate	high	high	moderate-high	
<i>Acer saccharinum</i>	Silver maple	moderate	moderate	moderate-high	moderate-high	
<i>Acer saccharum</i>	Sugar maple	low-moderate	moderate-high	high	moderate-high	
<i>Acer tartaricum</i>	Tatarian maple	moderate-high	n/a	n/a	moderate	
<i>Acer truncatum</i>	Shantung maple	low-moderate	low	low	moderate-high	
<i>Acer x freemanii</i>	Freeman maple	low-moderate	n/a	n/a	moderate	
<i>Aesculus hippocastanum</i>	Horse chestnut	low-moderate	moderate-high	high	low	can be invasive



2nd World Forum on Urban Forests

Washington DC, 2023

Critical Success Factor: Career Pathways for Those in Need



URBAN FORESTRY CAREER PATHWAY

Certified Arborist

+\$10,000/yr
+\$5/hr

Arborists and urban foresters are responsible for planting and maintaining urban trees, shrubs and woody plants. After gaining some work experience in urban forestry, an International Society of Arboriculture Certified Arborist credential can increase your base pay.

Tree Climber

\$40,510/yr
\$19.47/hr

Groundworker

\$32,094/yr
\$15.43/hr

Foreman/Crew Leader

\$54,804/yr
\$26/hr

Urban Forester

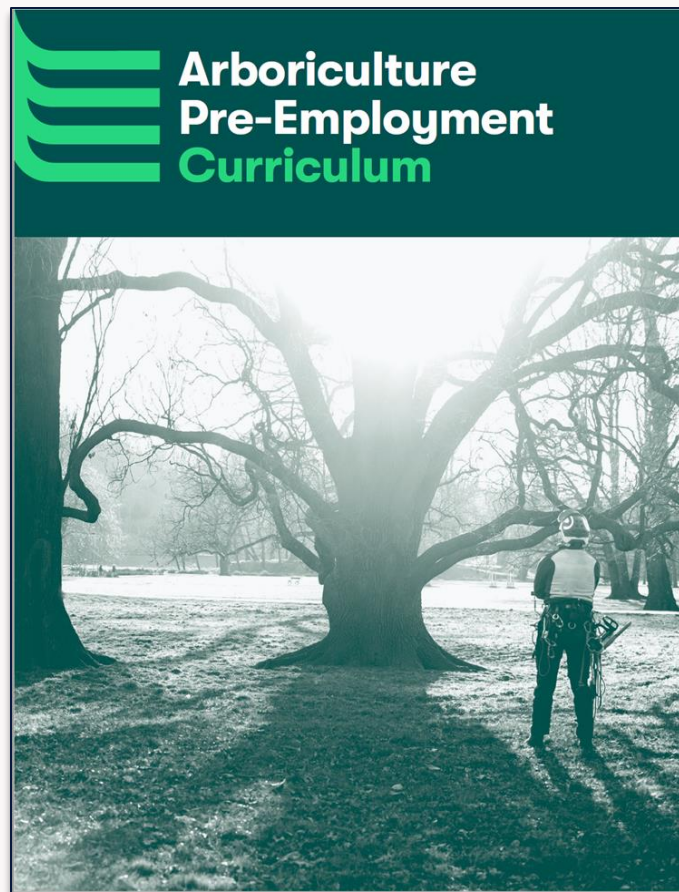
\$68,265/yr
\$32.82/hr

Business Owner

\$100,000/yr
\$48.07/hr



By Removing Key Barriers to Career Opportunities



Our Tree Equity Program Model



Tree Protection

Action Plan

Tree Equity Commitment

Data-Driven Priorities

Community Engagement

Inclusive Partnership



Tree Planting

Tree Nurseries

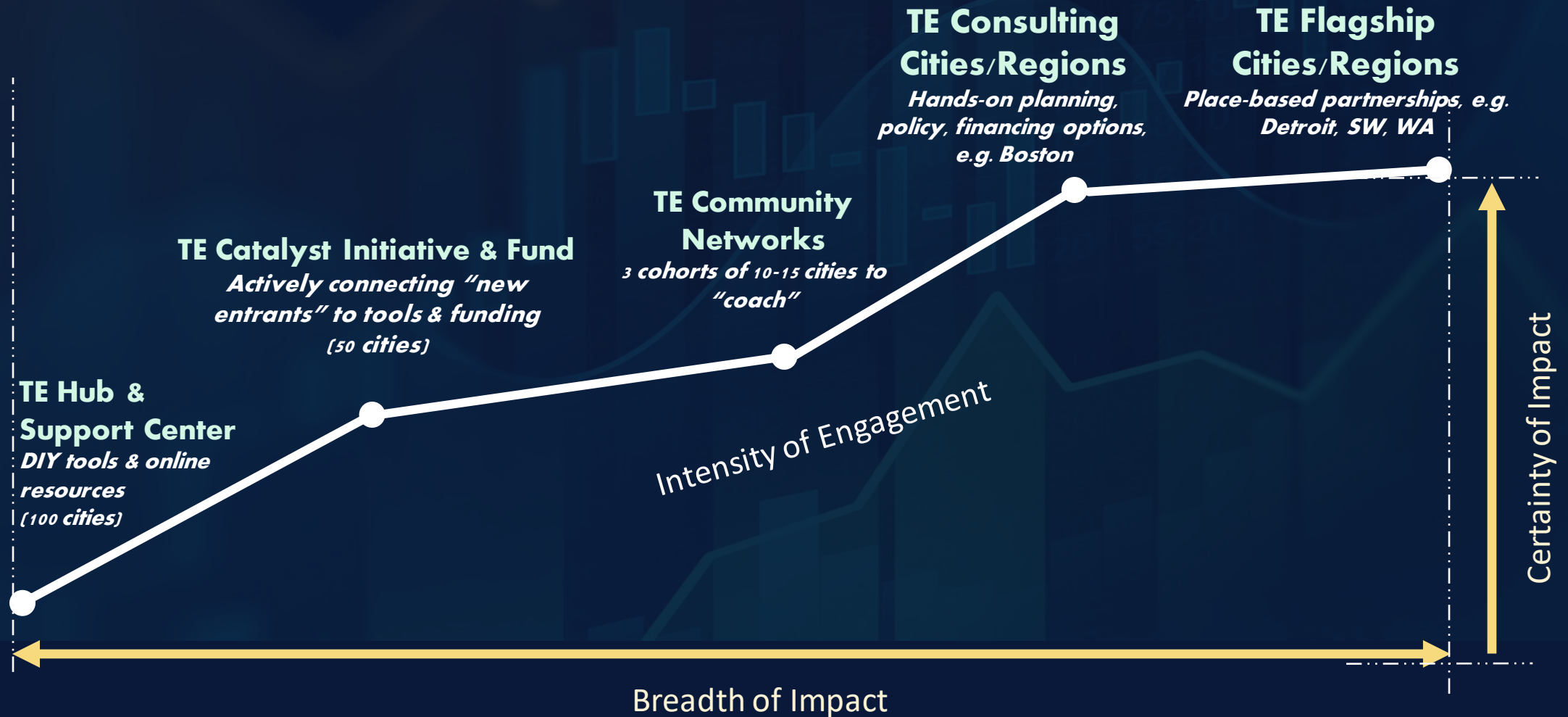


Tree Care

Urban Wood



How we deliver resources to communities: Tree Equity “Support System”



Place Based Partnerships

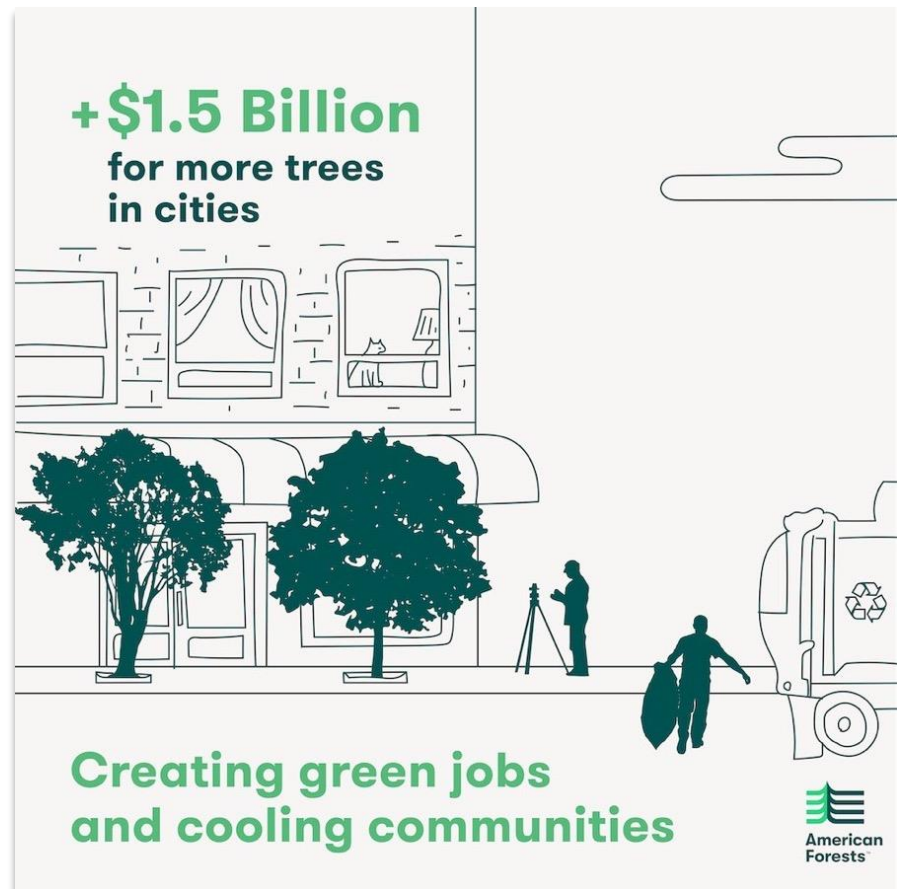


Phoenix Cool Corridors
1st of 100 Cool Corridors



Detroit Tree Equity Partnership
75,000 Trees & 300 Jobs

Critical Success Factor: Ask for Funding at Scale of Need



Tree Equity Policy Framework



Unlock and Sustain Federal **Funding** Streams



Empower Whole of Government Approach to
Build Program Efficiencies & Maximize Impact



Enhance Technical Assistance Delivery to the Field
Utilizing Best in Class Data Driven Decision
Making Tools & Accessible Resources



Thank You!

Joel Pannell

VP of Urban Policy

American Forests

Jpannell@americanforests.org

202-277-9002

