



I-DIEM
Institute for Diversity and Inclusion
in Emergency Management

THE NATIONAL SECURITY – CLIMATE ADAPTATION NEXUS
ENVIRONMENTAL AND ENERGY STUDY INSTITUTE (EESI)
CONGRESSIONAL BRIEFING
TUESDAY, APRIL 2, 2024

ANTOINE B. RICHARDS

I-DIEM OVERVIEW

- I-DIEM is a global 501(c)(3), non-profit organization
- Established out of a defined need, validated by scientific research.
- Over 200 cumulative years of emergency management and resilience building experience.
- Minority-owned, women-led organization.
- **One of the only organizations uniquely dedicated to resilience building resilience in historically marginalized communities through evidence-based strategies.**



WHY WE EXIST?

BUILD RESILIENCE

Less resilient communities have decreased ability to adapt resulting in decreases to national security.

PROMOTE INTEGRATION OF SOCIAL EQUITY

Without inclusive, equitable approaches to emergency preparedness and climate adaptation, climate change will continue to exacerbate pre-existing vulnerabilities and increase national security concerns.

EDUCATE AND TRAIN

Decreased education, awareness, and training of the disproportionate impacts of climate and climate adaptation on vulnerable communities will increase risks nationally and globally.

DECREASED RESILIENCE = DECREASED NATIONAL SECURITY

Without climate adaptation strategies we will see the following impacts on national security:

- Resource Scarcity
- Increased Natural Disasters & Inequitable Outcomes
- Vulnerability of Critical Infrastructure
- Geopolitical Instability
- Environmental Justice Issues

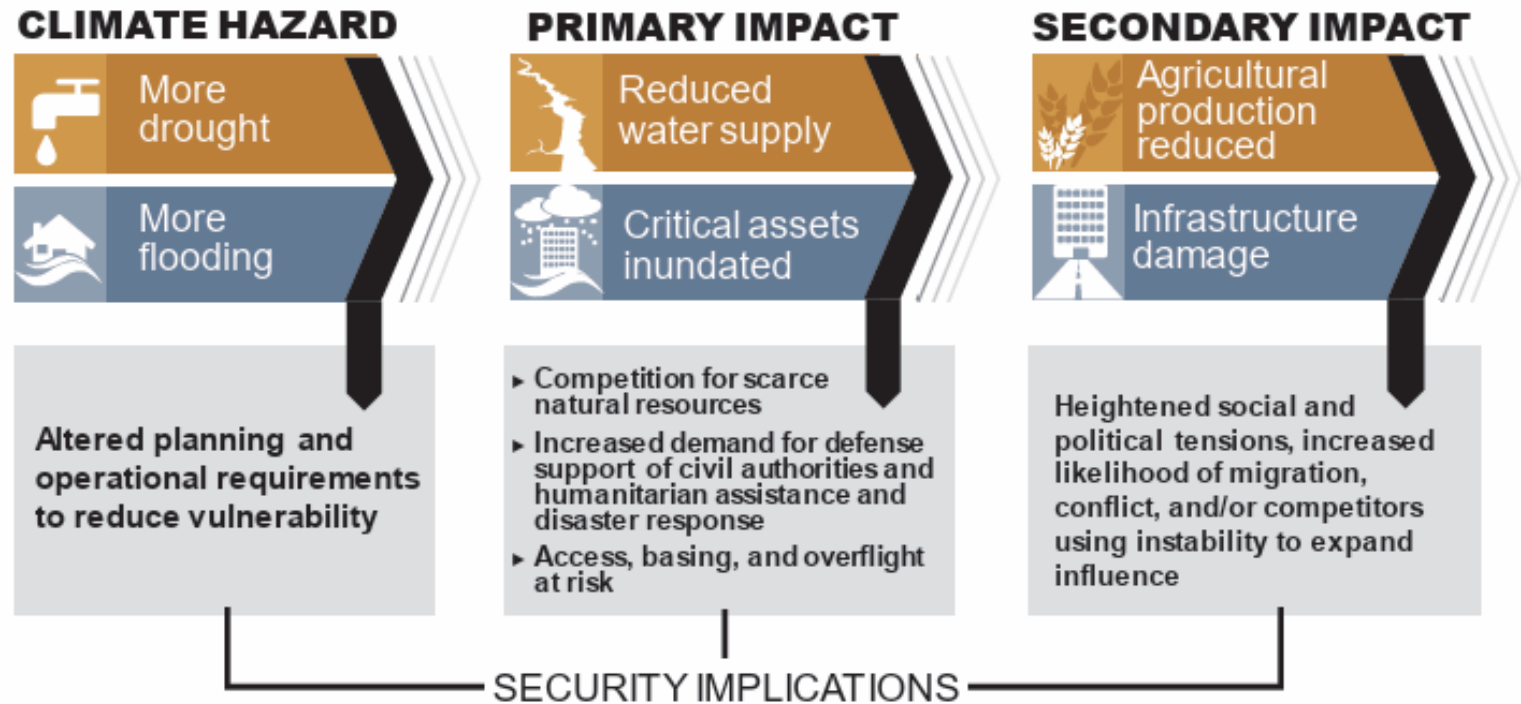



Figure 1. Examples of connections between climate hazards, primary and secondary climate impacts, and security implications.

Department of Defense (DOD)(2021). Department of defense climate risk analysis. <https://media.defense.gov/2021/Oct/21/2002877353/-1/-1/0/DOD-CLIMATE-RISK-ANALYSIS-FINAL.PDF>

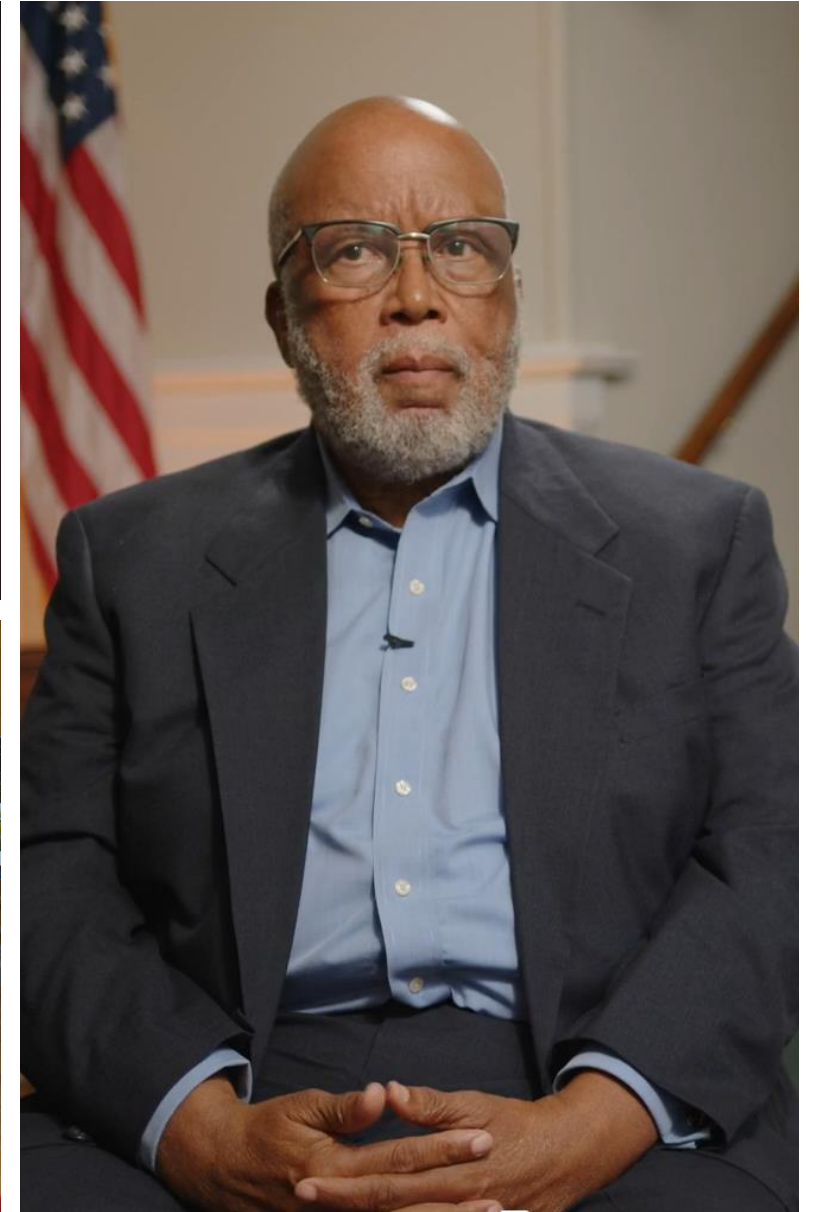
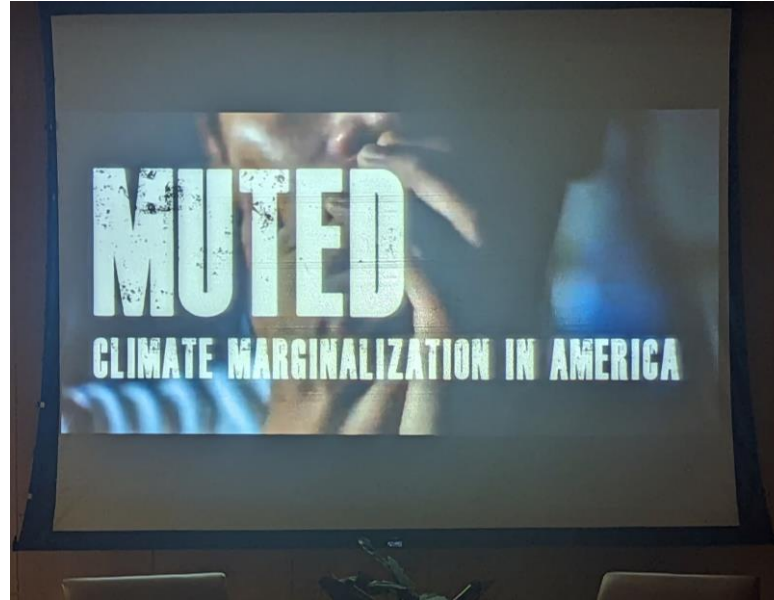
ADDRESSING CLIMATE AND VULNERABILITY FOR IMPROVED RESILIENCE & SECURITY



Resource Scarcity	<ul style="list-style-type: none"> • Bridging Resources for Underserved and Indigenous Populations in Landfall Disasters (BUILD) • Community Crafted Resilience Solutions (CCRS©)
Increased Natural Disaster	<ul style="list-style-type: none"> • Equity Response Team Deployments (Community-Based Strategies for Improved Preparedness, Response and Recovery) • Climate Education, Awareness, and Training Campaigns
Vulnerability on Critical Infrastructure	<ul style="list-style-type: none"> • Successful Acquisition of BRIC Funding for Quitman County, MS • National and Global Mitigation and Adaptation Project Development
Geopolitical Instability	<ul style="list-style-type: none"> • Improved local, state, tribal, and federal coordination for mitigation funding and resilience building activities • Draft, review, recommendations and analysis of federal policies
Environmental Justice Issues	<ul style="list-style-type: none"> • Amplification of environmental justice issues from community voices • Award Winning MUTED: Climate Marginalization in America documentary

OPPORTUNITIES FOR INCREASED COORDINATION OF ADAPTATION

- I-DIEM Community Crafted Resilience Solutions (CCRS) are strategies and measures designed and implemented by local communities to address the challenges posed by climate change and other disasters. These solutions are developed in a bottom-up approach, with active involvement and ownership from the community members themselves.

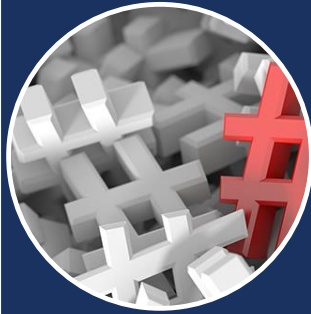


I-DIEM BARRIERS TO EFFECTIVE CLIMATE AND NATIONAL SECURITY PRIORITIES



Lack of Awareness

Climate change is not perceived as immediate concern by funders and donors.



Competing Priorities

Funding may have diverse interests and priorities leading to limited resources i.e. mitigation vs adaptation.



Complexity of Issue

Climate change is complex requiring interdisciplinary approaches and long-term solutions over immediate impact.



Political and Economic Factors

Political and economic factors impact funding availability including changes in policy and economic downturn.



Inadequate Policy Support

Limited government support or policies hamper efforts for adequate change.



Geographical Disparities

Climate adaptation may be unevenly distributed across certain regions creating barriers to funding and projects for low-income or developing communities.



Need for Long-Term Commitment

Addressing climate change requires sustained, long-term investments in research, advocacy and solutions.



DISINVESTMENT IN CLIMATE ADAPTATION & VULNERABILITY

- Despite increased annual federal climate change funding:
 - 89% funding allocated to Depts. of Commerce, Defense, Energy, Agriculture, NASA, and National Science Foundation
 - **I-DIEM only worked with NSF (Research) but no other Department or Agency.**
 - 18/533 (3%) primarily addressed climate change
 - Less than 5% of climate financing is allocated to adaptation
 - **Funding priorities target multiple areas (science, technology, international assistance, water, energy, etc.) but minimally address poverty, inequality, inequity.**
 - The US has made least progress towards committing its fair share to climate finance.
 - **I-DIEM Africa**
 - **I-DIEM Caribe**

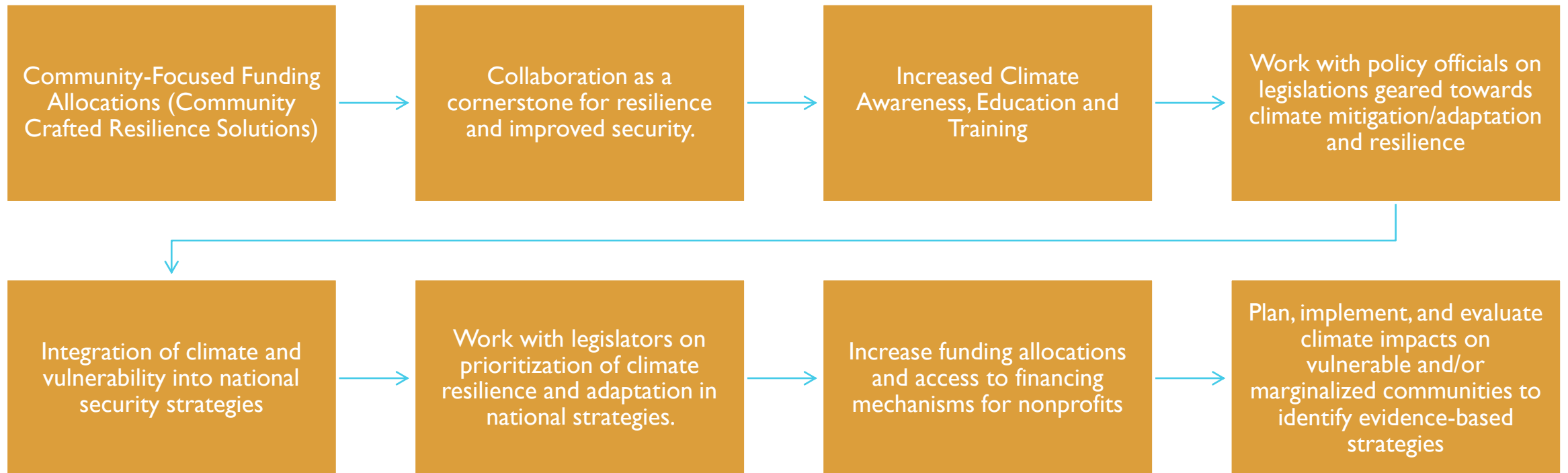
Hook, L. & Kao, J.S. (2021). COP26: Where does all the climate financing go? *Financial Times*. <https://www.ft.com/content/d9e832b7-525b-470b-89db-6275853315dd>

U.S. Government Accountability Office (GAO) (2018). Climate change: analysis of reported federal funding. <https://www.gao.gov/assets/d18223.pdf>

United Nations Development Programme (UNDP) (2021). Climate change adaptation priorities help address everyday risks. <https://www.undp.org/blog/climate-change-adaptation-priorities-help-address-everyday-risks>.

House Committee on Budget (2022). President Biden's budget tackles the climate crisis and other long-standing environmental challenges. <https://democrats-budget.house.gov/resources/reports/president-biden-s-budget-tackles-climate-crisis-and-other-long-standing>.

I-DIEM'S PATH FORWARD



THANK YOU!

WWW.I-DIEM.ORG

