

Working Together to Adapt to a Rapidly Changing North



Aaron Poe

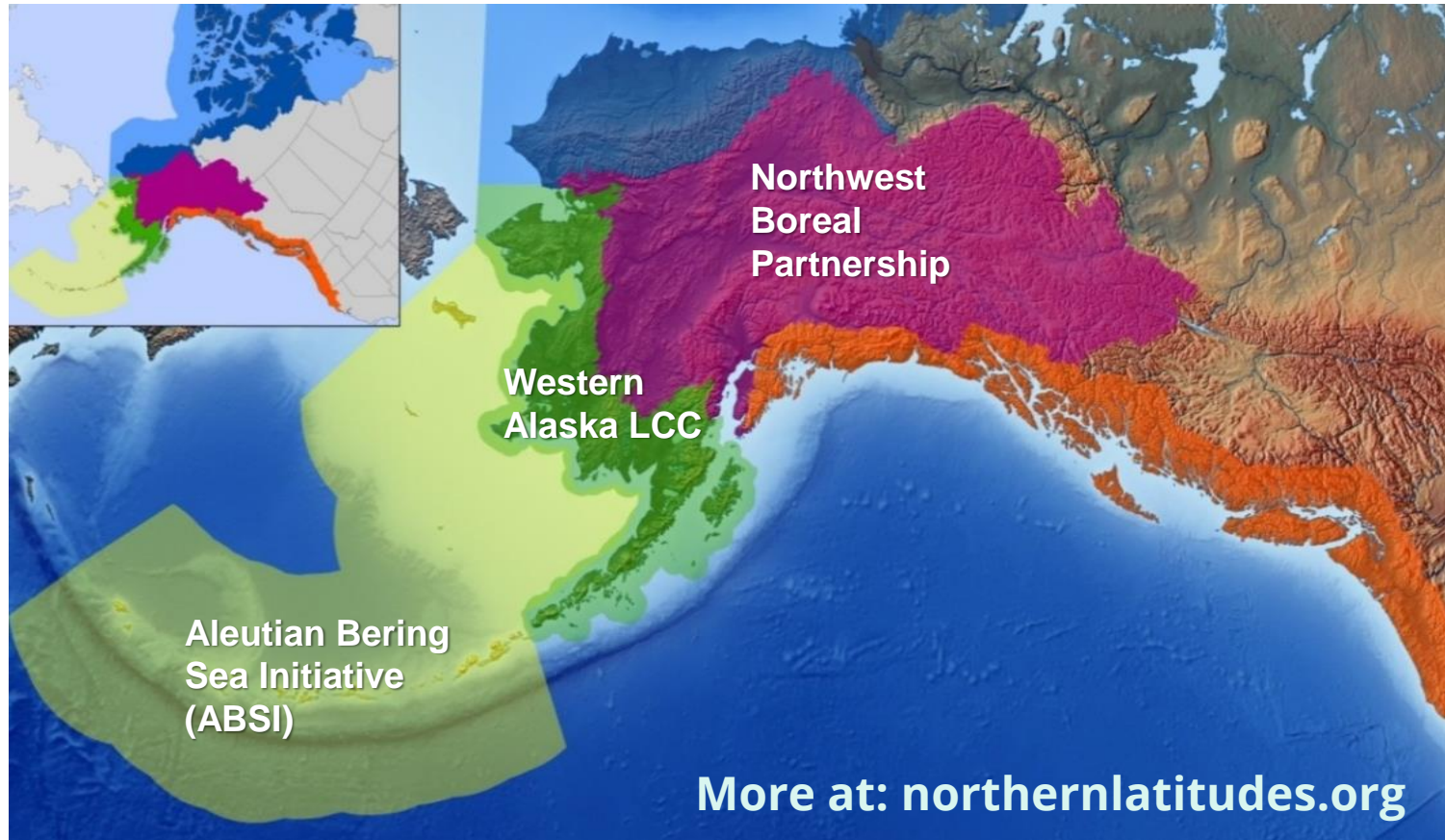
Alaska Conservation Foundation

- ABSIPartnership.org
- SustainableSoutheast.net

apoe@alaskaconservation.org & Twitter: @ABSILCC

The Northern Latitudes Partnerships (formerly “LCCs”)

- **Non-regulatory**, public-private partnerships led by diverse Steering Committees
- A ‘collective impact’ approach for issues too big for any entity to handle alone
- Formerly funded by the U.S. Fish and Wildlife Service as 5 “LCCs”; **now with 150+ partners** across Alaska & northwest Canada
- Continuing to **build upon** 9 years of trust and cooperation among our partners



A Progression from Science & Information to Adaptation & Resilience

During our first 5 years:

- 169 mostly science projects
- ~\$34.5 million in funding
- Over a 200% match on those funds

Now

- 150+ partner entities
- **A legacy of 220+ projects**
- 37 member organizations on three Steering Committees



Current and Former Steering Committee Entities



Our Host Organizations



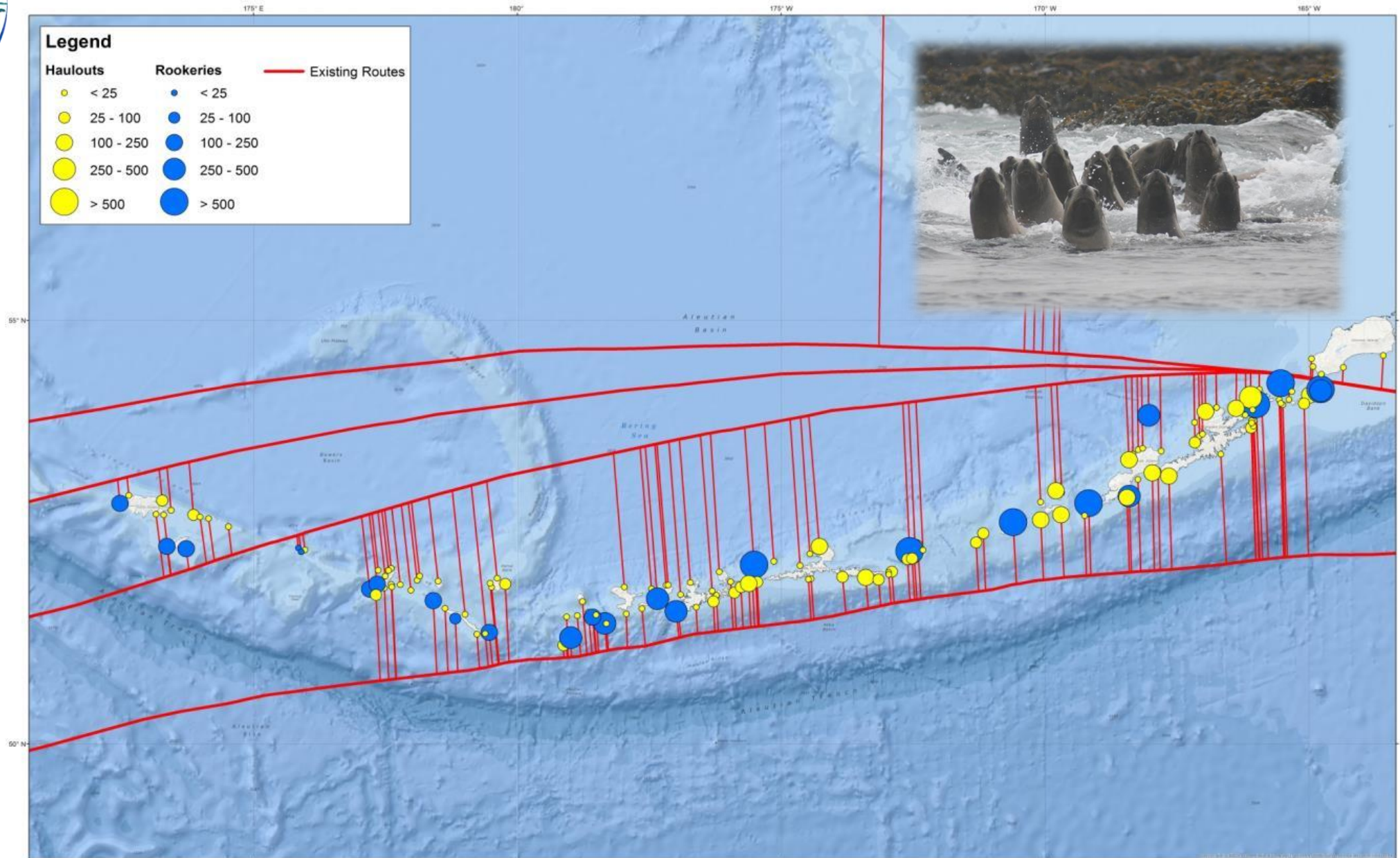
Three support staff housed in two nonprofit organizations

Our Largest Funder



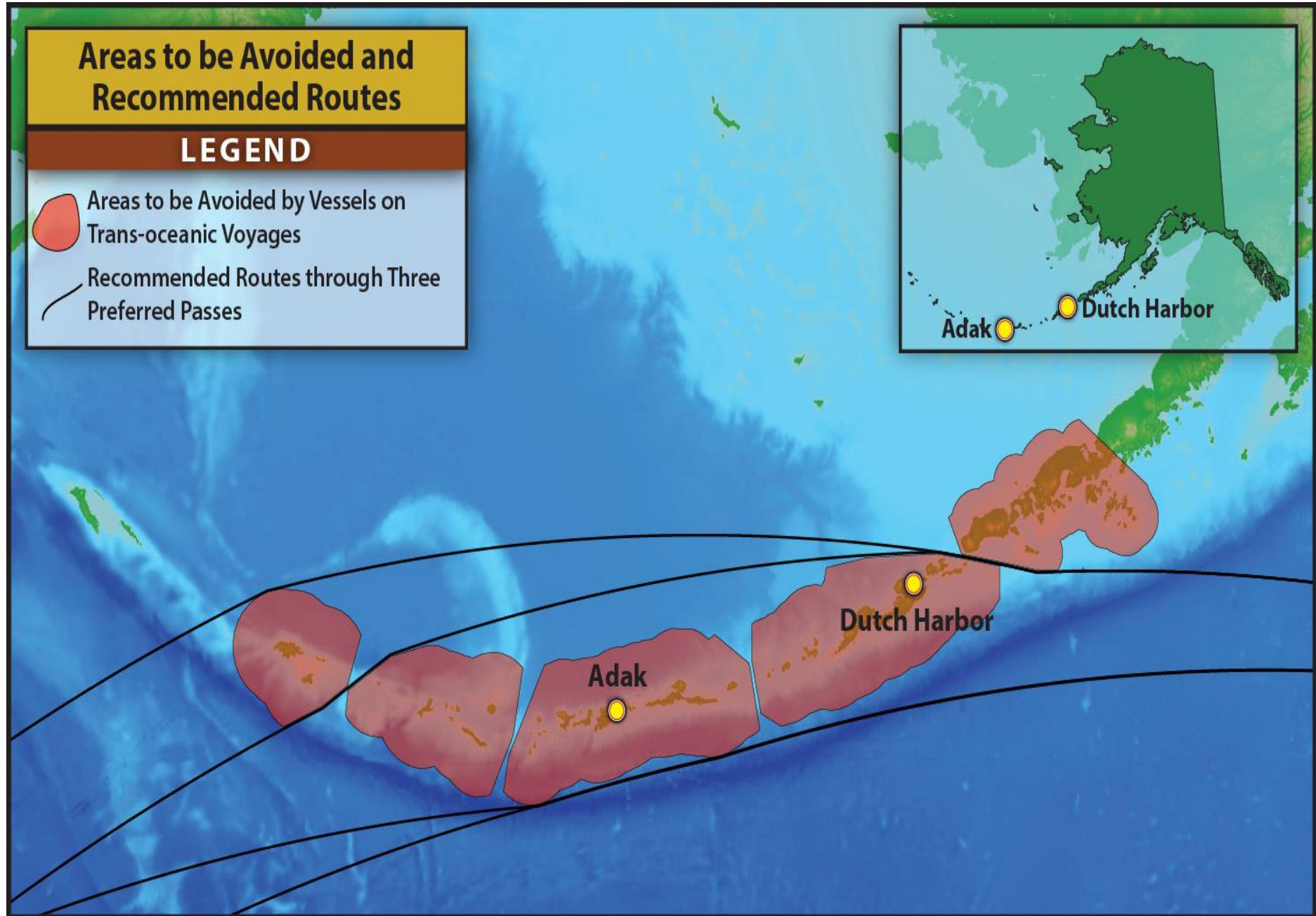


Steller Sea Lions & Shipping Routes in the Aleutian Islands



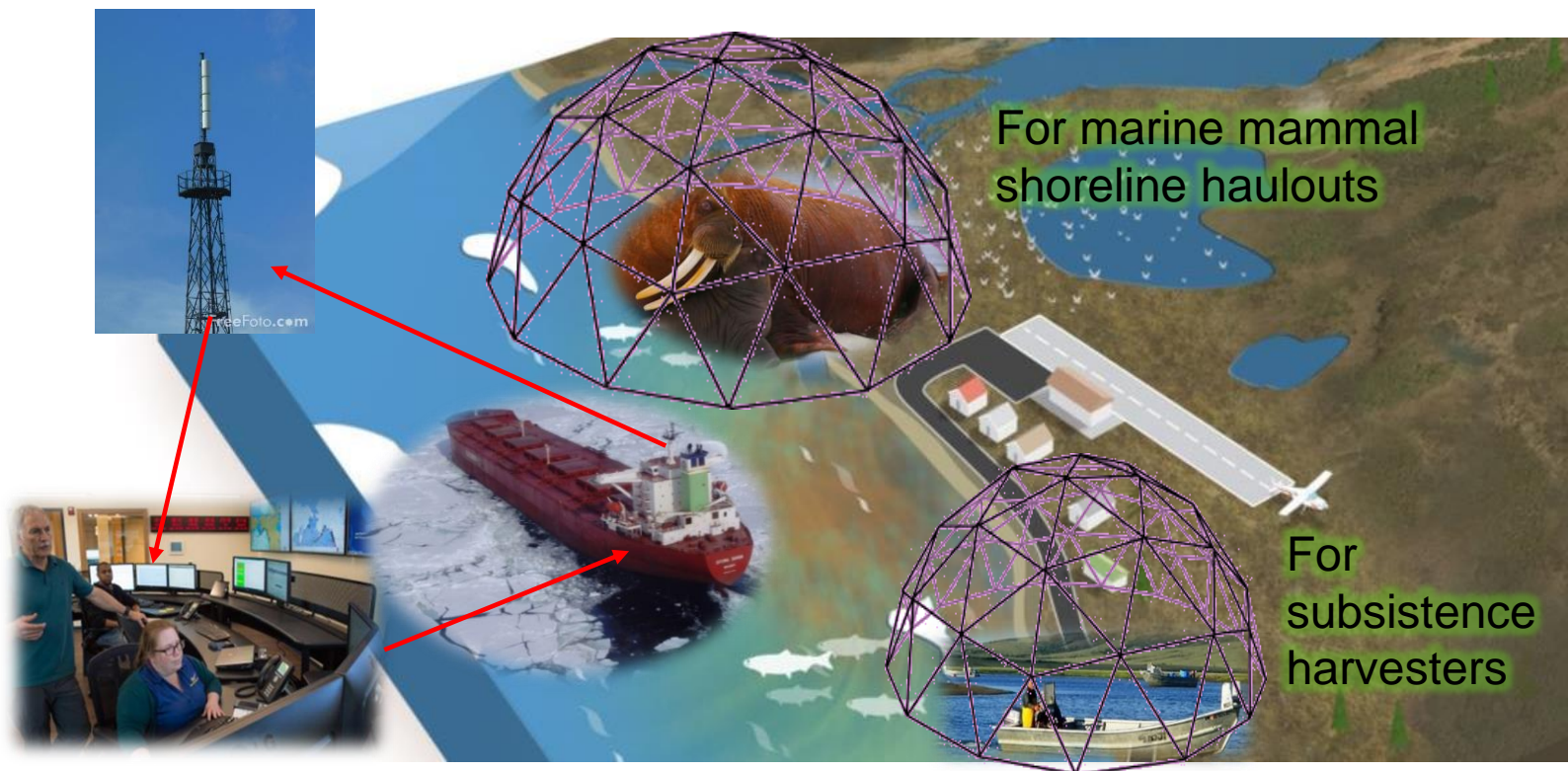


Five 'Areas to be Avoided' Went Into Effect January 2016





A New, More Dynamic Tool: A Marine “Geofence”



- GPS-based virtual perimeter for **large vessels** triggered by Automatic Identification System (AIS)
- Virtual fences to minimize impacts to species and coastal hunters
- In partnership with industry nonprofits; informed by agencies and tribes
More at: www.AlaskaGeofence.org
- Funding from Department of Homeland Security & Wildlife Conservation Society

5 Regional Coastal Resilience & Adaptation Workshops in 2016

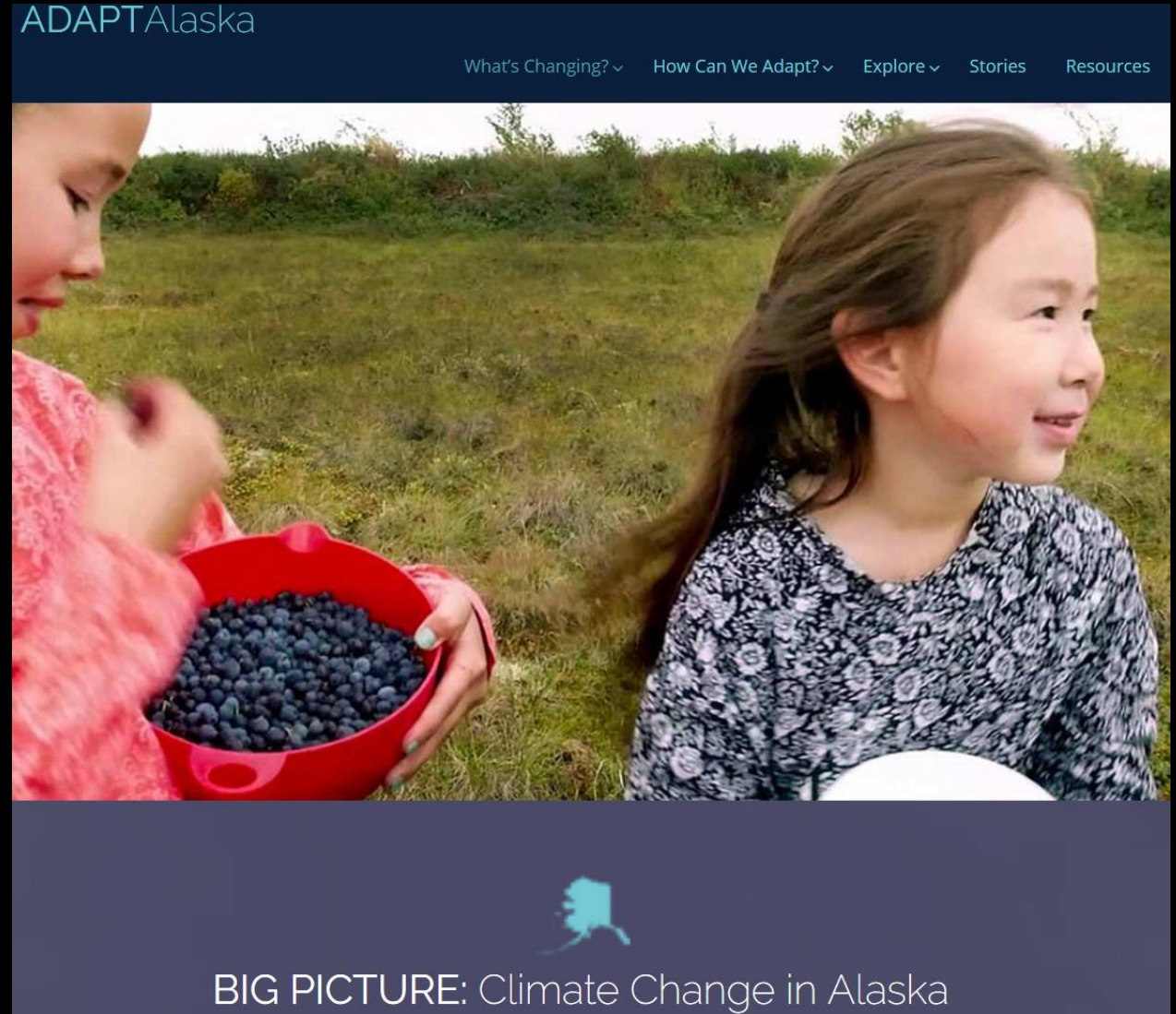


- Bering Strait, Nome
- Aleutian/Pribilofs, Unalaska
- Bristol Bay, King Salmon
- Northwest Arctic, Kotzebue
- Southeast Alaska, Ketchikan (Alaska Sea Grant)

300 individuals, 52 tribes, 16 state & federal agencies

www.AdaptAlaska.org

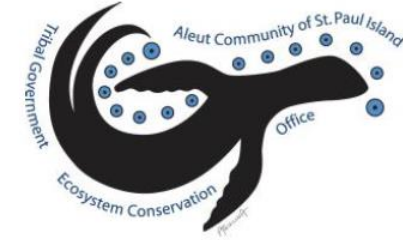
- ❖ Launched in 2017, now hosted by Alaska Sea Grant
- ❖ Tools, resources for communities, agencies, (e.g., from our coastal resilience toolbox)
- ❖ A place to see/share adaptation success stories and connect with others





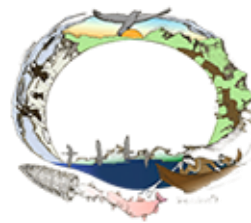
Indigenous Sentinels Network

Enhancing Indigenous-Led Community-Based Monitoring



Program Goal

To provide remote, indigenous communities with tools, training, networking and convening, coordination, and capacity for ecological, environmental, and climate monitoring.



Tanana
Chiefs
Conference



Western Alaska
Landscape Conservation Cooperative



NORTHWEST BOREAL
Landscape Conservation Cooperative



More at www.beringwatch.net



SUSTAINABLE SOUTHEAST PARTNERSHIP

Resilient Peoples and Place



Local Business



Energy Independence



Food Security



Community Fisheries
& Forestry

Triple Bottom Line Approach



People



Planet



Profit

More at: SustainableSoutheast.net

Adaptation Needs Surfaced by these Partnerships

“Well that’s a month long conversation...”

- Data needs galore
- Telecommunications infrastructure and technology for remote communities
- There is no clearinghouse for adaptation information, data and resources



Barriers to Collaboration and *Action*

- Financial assistance operations are convoluted and slow making it hard for federal agencies to partner
- Communities don't have the resources to really share their needs *or* enough venues where they are heard
- There's no central authority for leadership on adaptation



Adaptation Opportunities Are There, But...

- Individuals and businesses who want to act lack the information to do so
- *Increased* recognition of the value of Indigenous Knowledge but limited capacity/venues to connect with science and management
- Key players in adaptation have recently lost funding support
- A sense from large, private funders that *'Alaska is fine'*



Outpacing the Predicted Change...



Alaskan's are having to move forward

Aaron Poe

apoe@alaskaconservation.org & Twitter: @ABSILCC