

*A Resilient Future for Coastal Communities*  
**Federal Policy Recommendations...**



# Climate Justice Portfolio

Liz Russell, Climate Justice Program Director  
October 2020

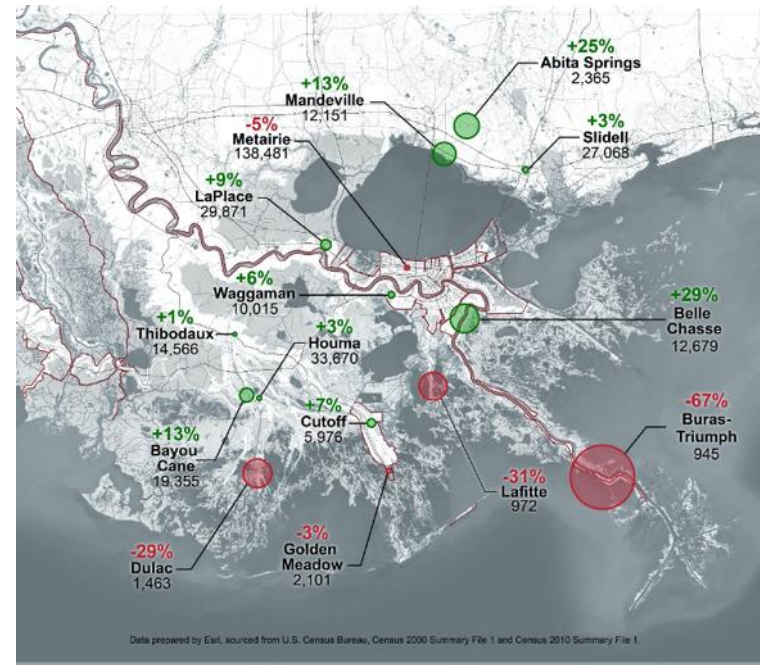


## Climate Action Towards Justice

Climate justice works toward comprehensive, adaptive and regenerative solutions for each sector of our lives that the climate crisis touches

Climate Justice in Louisiana requires:

- An account of the land's history
- An understanding of the systems of oppression
- The power to dismantle the harmful influence of destructive practices
- An offering of policies, practices, and resources that affirm our collective humanity
- The influence to promote policies beneficial to our people



## A Resilient Future for Coastal Communities

# Federal Policy Recommendations...

---



3

**Everyday people** have the opportunity to connect their personal experience to larger scientific analyses, are informed about land loss, flood risk, and climate change, and empowered to take action to support change in their communities.

**Community-based organizations** have the space and resources to collaborate, design, and deliver results on concrete climate, racial and economic justice goals to create inclusive economies and resilient environments.

**Government leaders** understand the implications of a changing climate and genuinely work with impacted communities to develop practices responsive to the needs of all Louisianans, beginning with and centering marginalized and disadvantaged communities.

**Businesses** thrive and create good, stable jobs for all Louisianans, contributing to the restoration of our ecology and cultivating inclusive, healthy economies to ensure that talent and wealth stay in Louisiana.

A comprehensive strategy to Build People Power, Advance Just Policies, and Cultivate a New Narrative enables **a healthy, vibrant and equitable future for Louisiana.**



## Communities at the Forefront

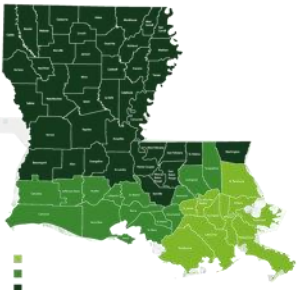
4

**1.1 In order to establish and strengthen long-term relationships, federal agencies should consult with communities to ensure that projects and programs are designed with the community and specifically address community needs.**

**1.2 Federal agencies should provide funding within adaptation and resilience grant opportunities for local leader training.**

**1.3 Federal funding for adaptation and resilience should be designed so that communities have more decision-making authority in project implementation.**

A Resilient Future for Coastal Communities  
**Federal Policy Recommendations...**



**LEAD'S IMPACT**



HOSTED  
**6 COHORTS**



ACROSS  
**10 PARISHES**



WITH  
**9 GRANTEE PARTNERS**

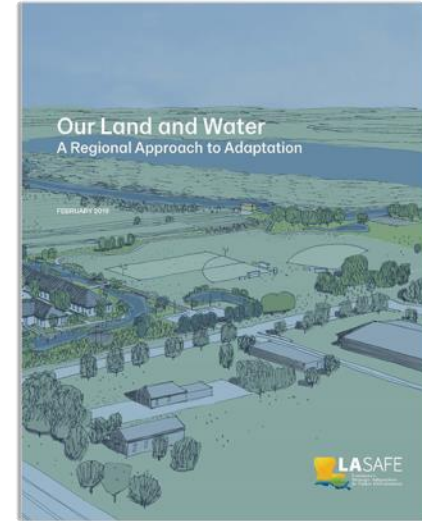
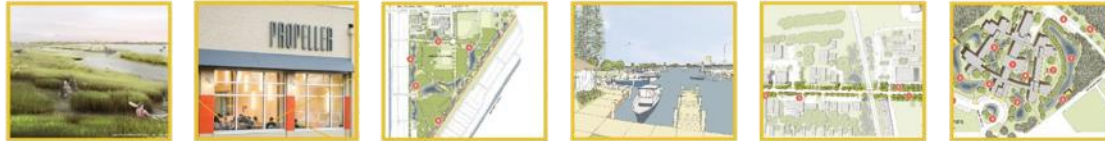
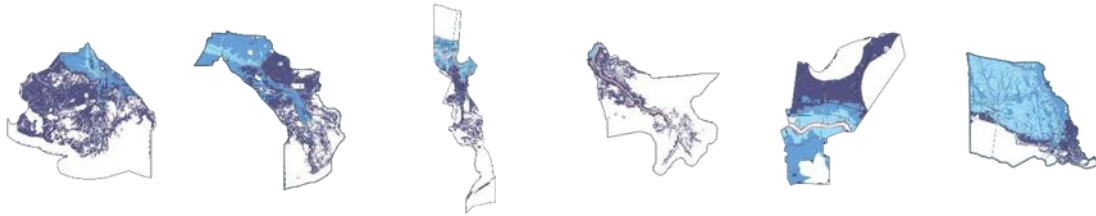


AND OVER  
**125 GRADUATES**



# A Resilient Future for Coastal Communities

## Federal Policy Recommendations...



*A Resilient Future for Coastal Communities*  
**Federal Policy Recommendations...**



## Priority Areas

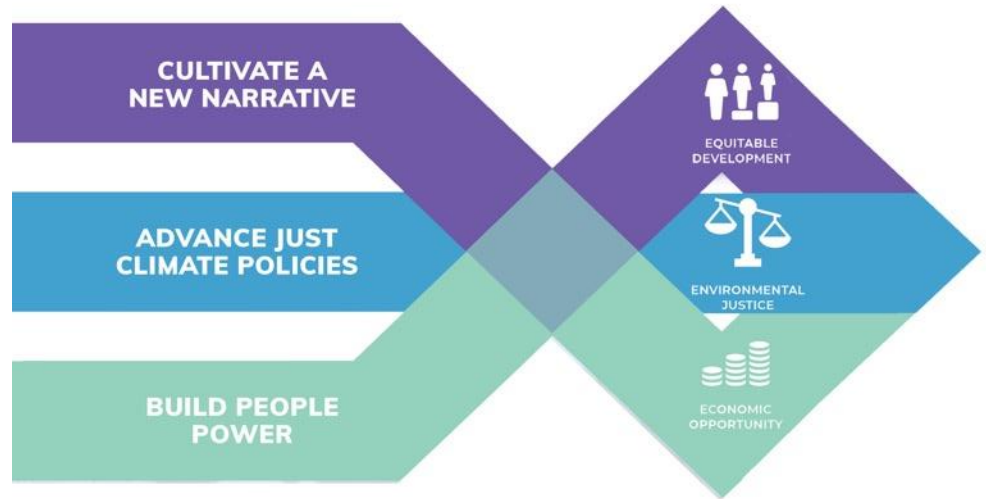
We invest to:

**BUILD PEOPLE POWER**

**ADVANCE JUST POLICIES**

**CULTIVATE NEW NARRATIVES**

*Many worthy causes, where is the greatest potential for change?*



## Land use and development

8

**2.1 Congress should ensure that all land use planning is designed—and all infrastructure is built—to anticipate and withstand future climate conditions.**

**2.7 Federal agencies should account for environmental and social impacts in benefit-cost analysis tools.**

**2.11 The federal government should encourage research into the cost of climate vulnerable communities staying in place compared to adapting through relocation.**

**2.12 Congress should develop national policy to prepare for the movement of people as a result of coastal hazards and climate impacts.**



## Disaster preparedness

**5.2 Congress should update the National Flood Insurance Program to discourage construction in risk-prone areas, including by requiring that flood insurance rate maps consider climate projections and reflect actual risk, and continue to ensure the affordability of premiums.**

**5.4 Congress should make resilience a priority when developing and preserving safe and affordable housing.**

## Land use and development & Financing adaptation and resilience <sup>10</sup>

**2.8 Federal agencies should ensure, through provisions in federal contracts, that engineers and contractors are trained and qualified to incorporate nature-based solutions in infrastructure projects.**

**6.1 Congress should ensure that climate justice and equity considerations apply to adaptation and resilience programs and projects financed or leveraged with federal funds, with special attention to communities that face systemic underinvestment.**

**6.2 The federal government should increase support for coastal adaptation through financing mechanisms, including revolving loan funds.**

**6.3 Congress should establish a national green bank to deploy capital for coastal**

*A Resilient Future for Coastal Communities*

# **Federal Policy Recommendations...**



**EESI**  
Environmental and  
Energy Study Institute



Liz Russell: [lwrussell@foundationforlouisiana.org](mailto:lwrussell@foundationforlouisiana.org)  
225.726.3623

