



***Materials will be available at:***  
**[www.eesi.org/092320workforce](http://www.eesi.org/092320workforce)**

***Tweet about the briefing:***  
**[#eesitalk](#)    [@eesionline](#)**

# CONGRESSIONAL BRIEFING

## Growing Green Industry and Innovation: Mass Timber

***Briefing Series: Workforce Wednesdays***

Wednesday, September 23, 2020

# About EESI...



## **NON-PROFIT**

Founded in 1984 by a bipartisan Congressional caucus as an independent (i.e., not federally-funded) non-profit organization



## **NON-PARTISAN**

Source of non-partisan information on environmental, energy, and climate policies



## **DIRECT ASSISTANCE**

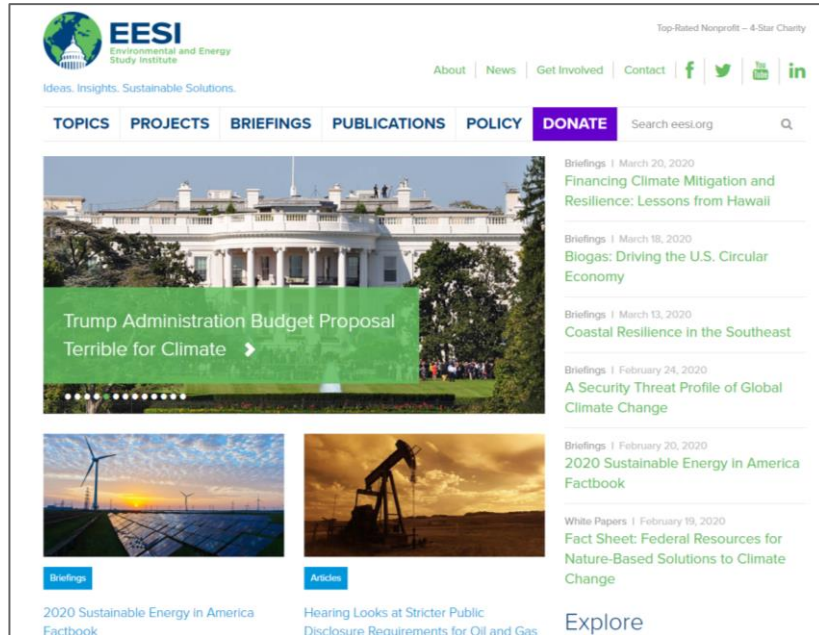
In addition to a full portfolio of federal policy work, EESI provides direct assistance to utilities to develop “on-bill financing” programs



## **SUSTAINABLE SOCIETIES**

Focused on win-win solutions to make our energy, buildings, and transportation sectors sustainable, resilient, and more equitable

# ...About EESI



## HILL BRIEFINGS

Video recordings and written summaries of Congressional briefings



## CLIMATE CHANGE SOLUTIONS

Bi-weekly newsletter with all you need to know including a legislation tracker



## SOCIAL MEDIA (@EESIONLINE)

Follow us on Twitter, Facebook, LinkedIn, Instagram, and YouTube



## FACT SHEETS

Timely, science-based coverage of climate and clean energy topics

# Mass Timber Workforce Benefits

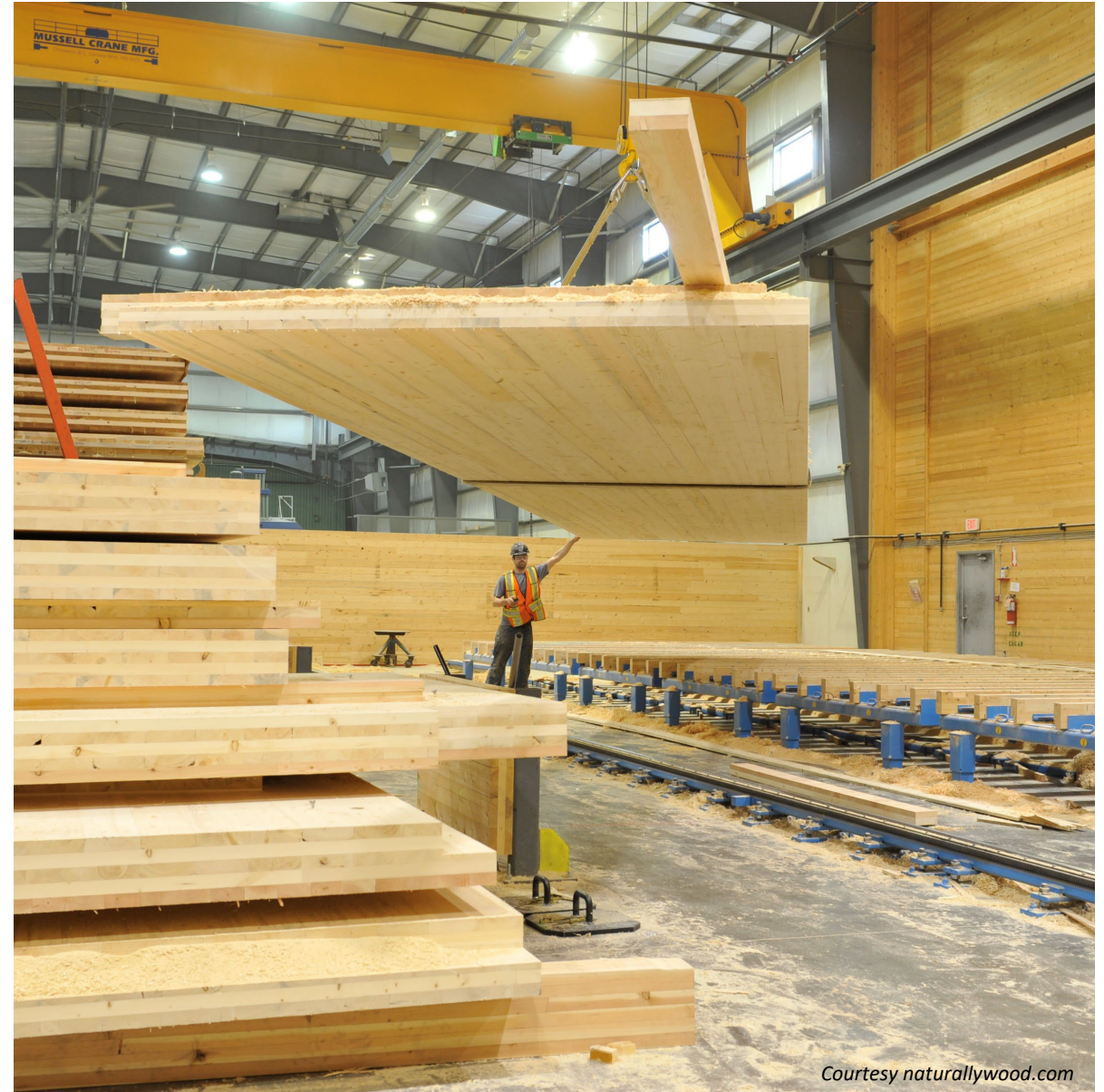
Jennifer Cover | WoodWorks  
September 2020













# Architects, Engineers & Developers

35,000+ Practitioner  
Education Hours Annually

400 Building Projects  
Supported Annually





**WoodWorks**  
WOOD PRODUCTS COUNCIL

# Growing Market Demand

921 Projects

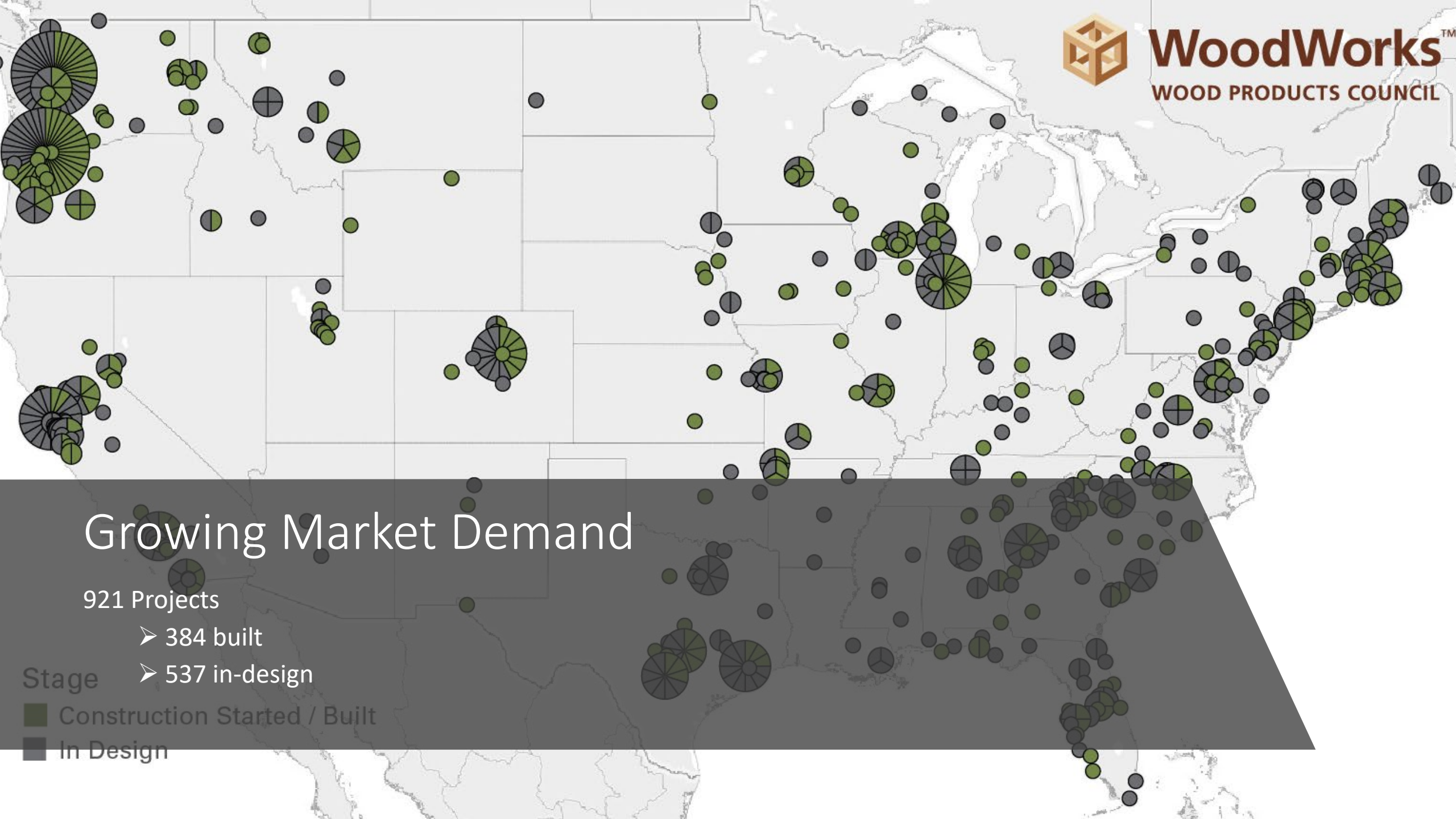
➤ 384 built

➤ 537 in-design

Stage

■ Construction Started / Built

■ In Design







# Construction Workforce

- Construction Management
- Installer Training





# Construction Management

2020

4 In-Person CM Workshops – 216 Participants

2 Online CM Workshops – 440 participants





# Installer Training

2020

Seed Training Centers

- Chicago Carpenters Training Center 2,432 training hours
- Northwest Carpenters Institute 136 hours
- HITT Construction





# Promote Workforce Skillset



## We're stronger together.

Our network of affiliated professionals offer a wealth of shared knowledge, expertise, and opportunity for growth. Find experienced professionals who share a mutual interest in the future of timber design and construction.

ARCHITECTS

ENGINEERS

CONTRACTORS

INSTALLERS

DEVELOPERS

[+ VIEW ALL](#)



# 2021 Workforce Training Expansion

---

Dead Lead Study

Not Enough Trained GCs and Installers

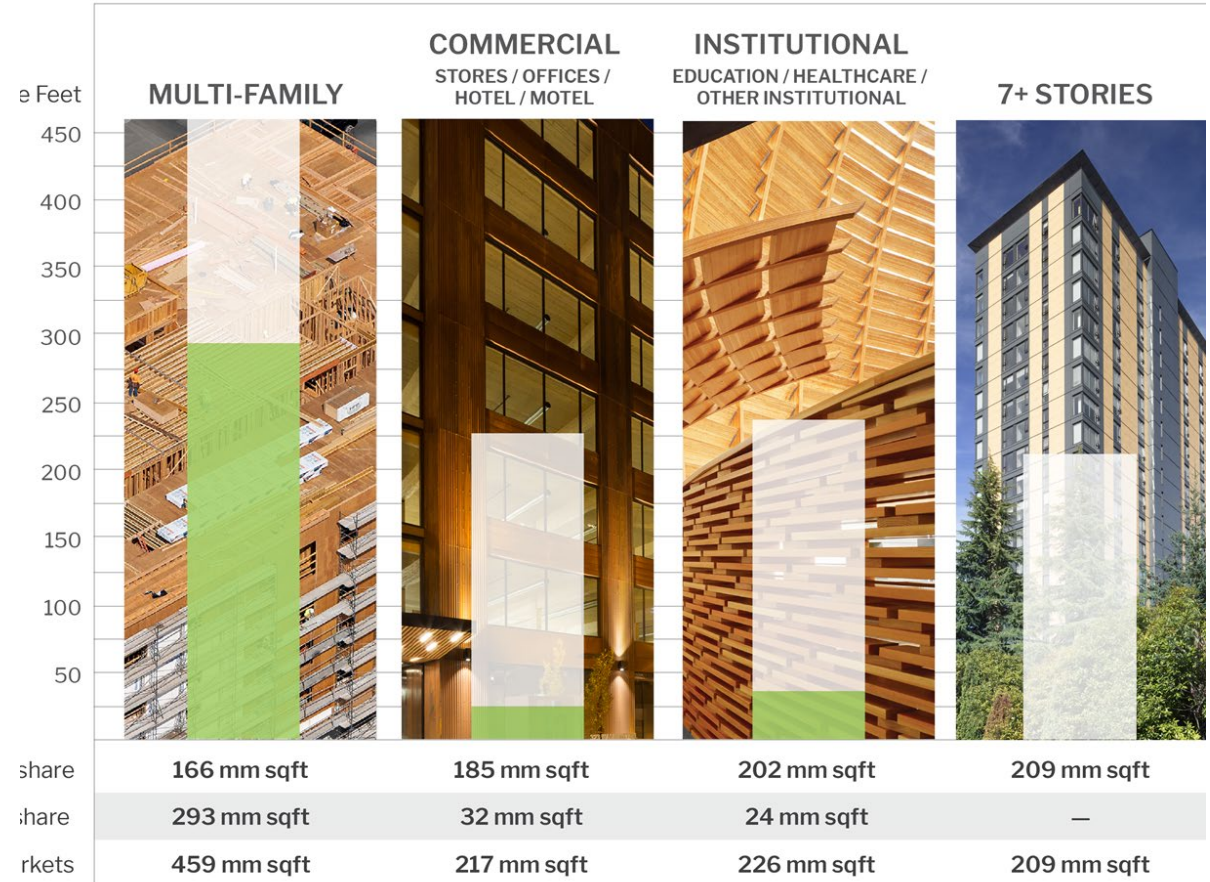
3 Year Program in Development

- MT Construction Manual
  - 16 Hour Installer Training Package
  - 10 Training Centers
  - 10 Community Colleges
  - Engage with 50 GCs
  - Virtual or In-Person Workshops
- 



# Market Growth Opportunity

17,000 Buildings Annually







ICE Block 1, RMW Architecture & Interiors, Buehler Engineering, photo © TG Photography



ICE Block 1, RMW Architecture & Interiors, Buehler Engineering, photo © TG Photography

Thank you



**WoodWorks™**  
WOOD PRODUCTS COUNCIL



*Freres*

LUMBER CO., INC.

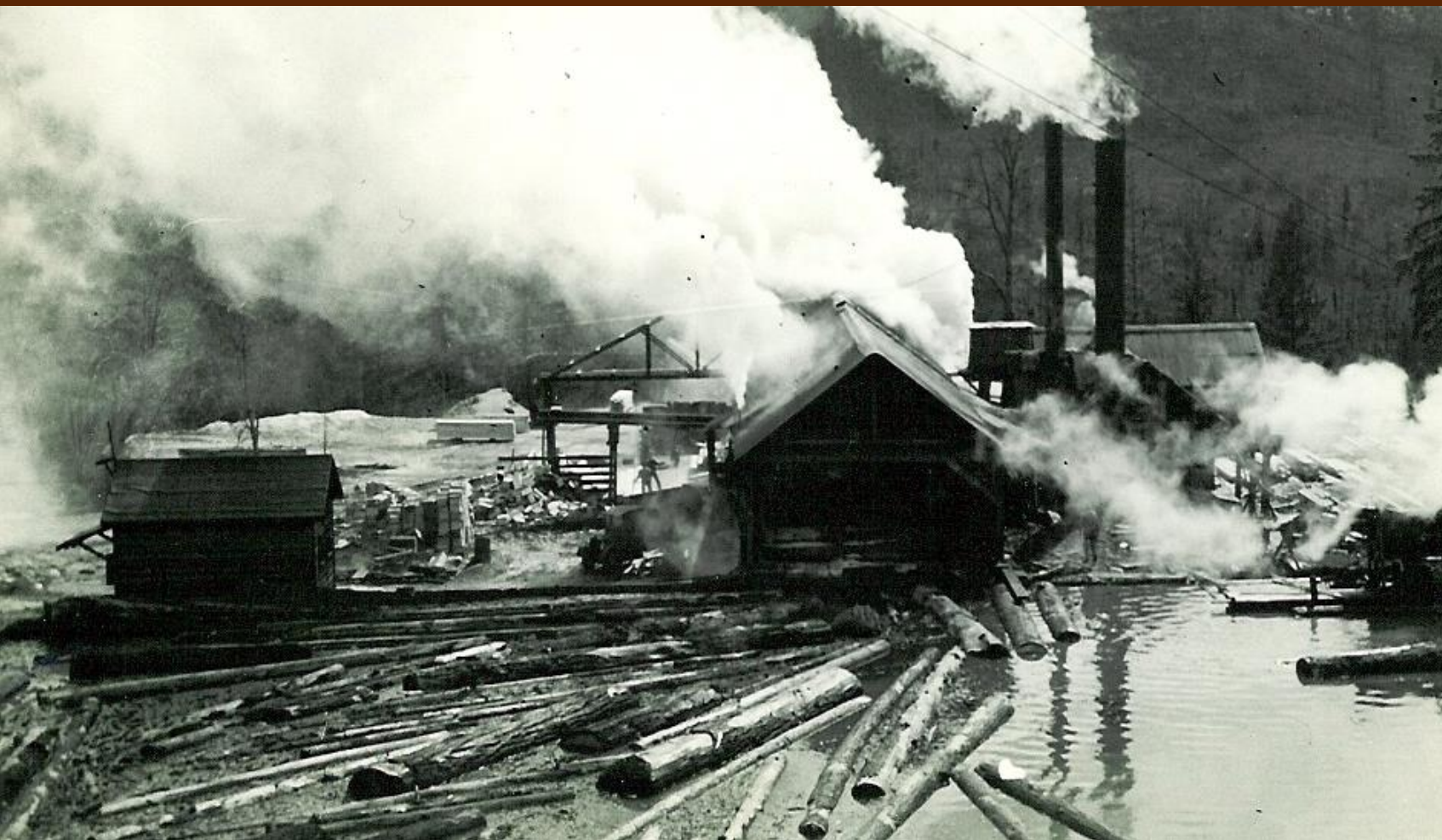


**[www.frereslumber.com](http://www.frereslumber.com)**





LUMBER CO., INC.



## From Then...

Founded in 1922 by TG Freres

Sawmill on the North Fork of the  
Santiam River

Moved to current location in 1950's

Converted to veneer manufacturing in  
the late 1950's.





## ... To Now FLC Operates

Two Veneer plants

Veneer Drying Facility

Plywood Plant

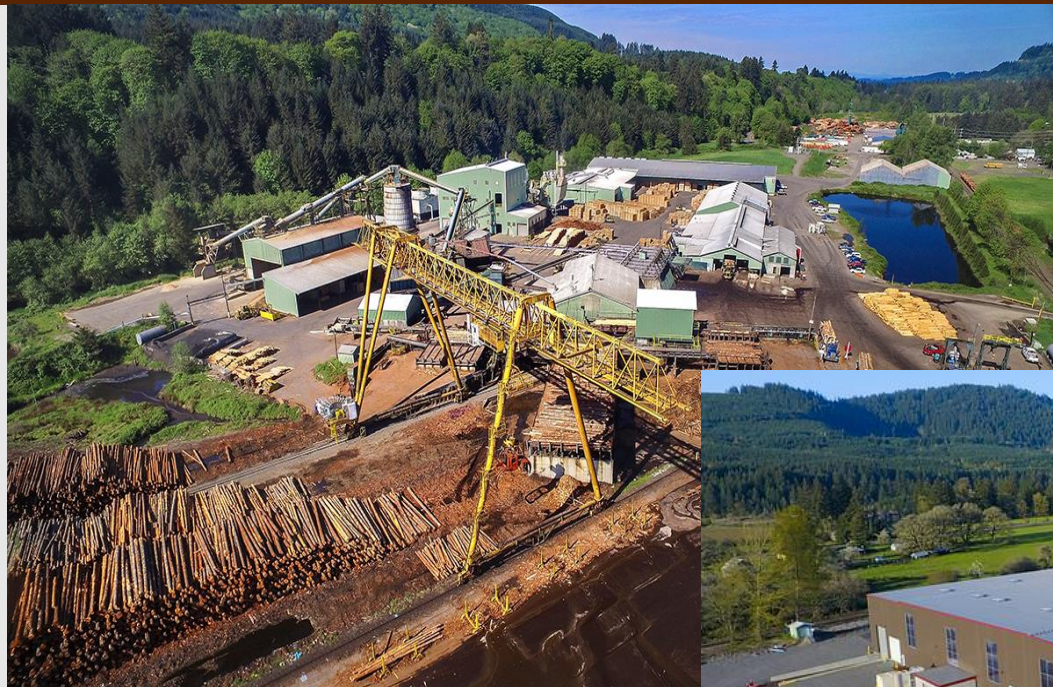
Cogeneration Facility

Stud mill

Fleet of Log and Highway Trucks

## Mass Ply Panel Facility

## Operational December 2017







# At Freres Lumber we:

Employ 430 full time people

**TRYING TO HIRE 50 MORE!**

Sustainably manage more than 17,000 acres of timberland

Gross Annual Sales Revenue of \$150 million

## Products

- Variety of residuals
- Electricity
- Lumber
- Plywood
- Veneer

**Specialize in veneer for engineered wood products**

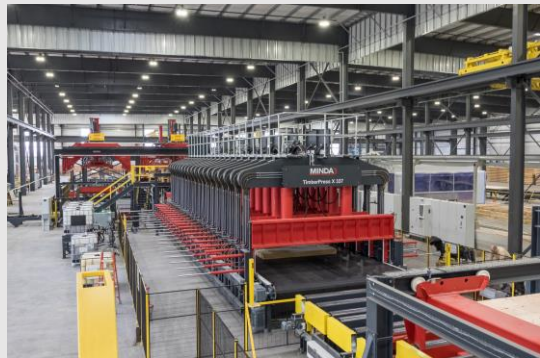






LUMBER CO., INC.

# Mass Timber Panel Facility Operational December 2017





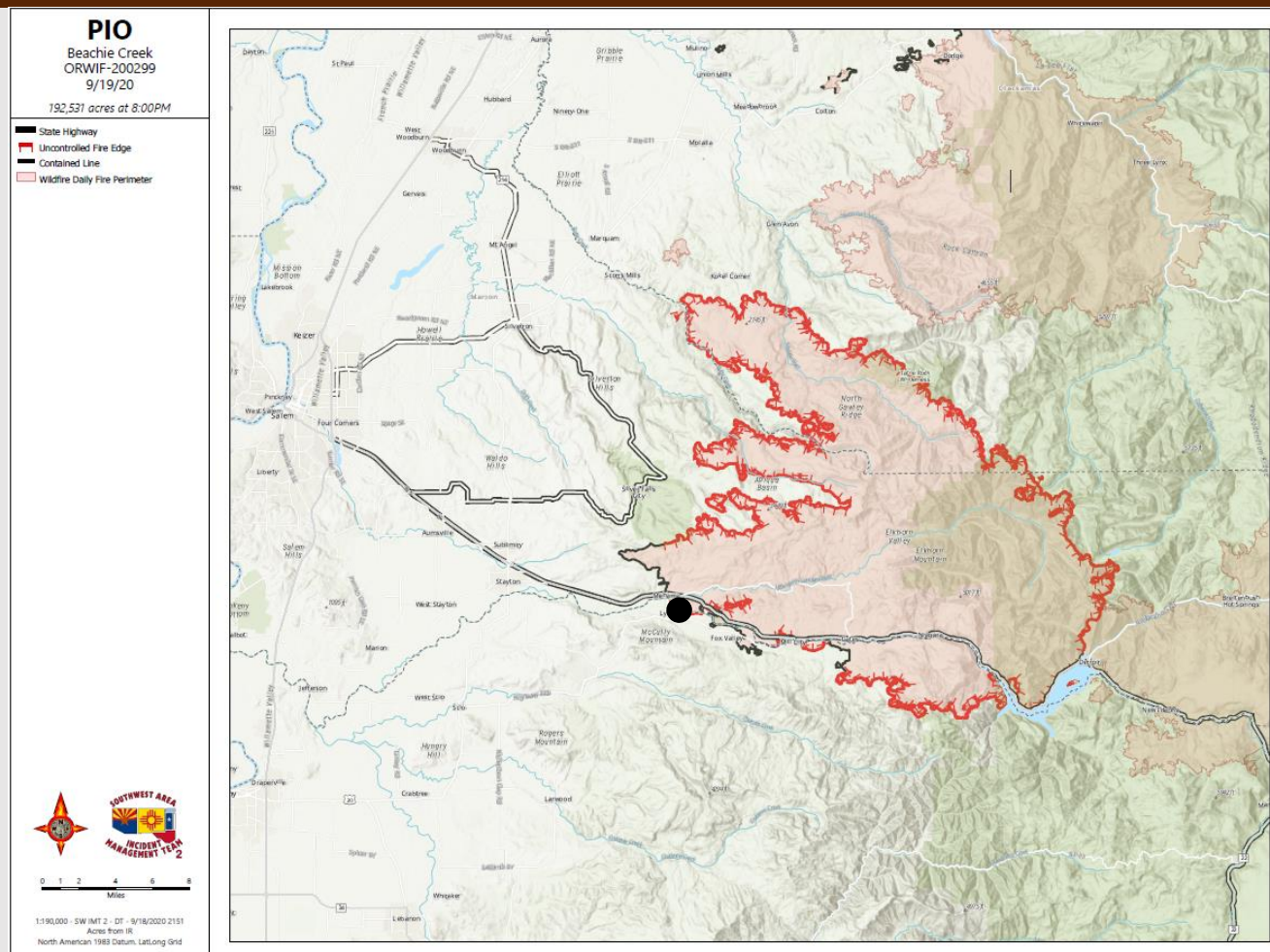


LUMBER CO., INC.



# Beachie Creek Fire

- 192,531 acres at 8:00pm 9/19/20
- 32% Containment
- 60% was on Federal Land- Consistent with Federal Ownership %
- On our own land, we estimate 100mm bdf salvage volume
  - 15 months supply for Freres Lumber
  - 7 years supply at our historical sustained yield harvest rate







## 2018 Farm Bill

---

In Section 207, the FY2018 omnibus authorized FS and BLM to enter into 20-year stewardship contracts or agreements, if the majority of the federal lands are located in areas classified in Fire Regime Groups I, II, and III. The law also authorized the Secretary to give a procurement preference to a contractor that promotes an innovative use of forest products as part of the contract.



### Sustainability

#### Fiber Recovery

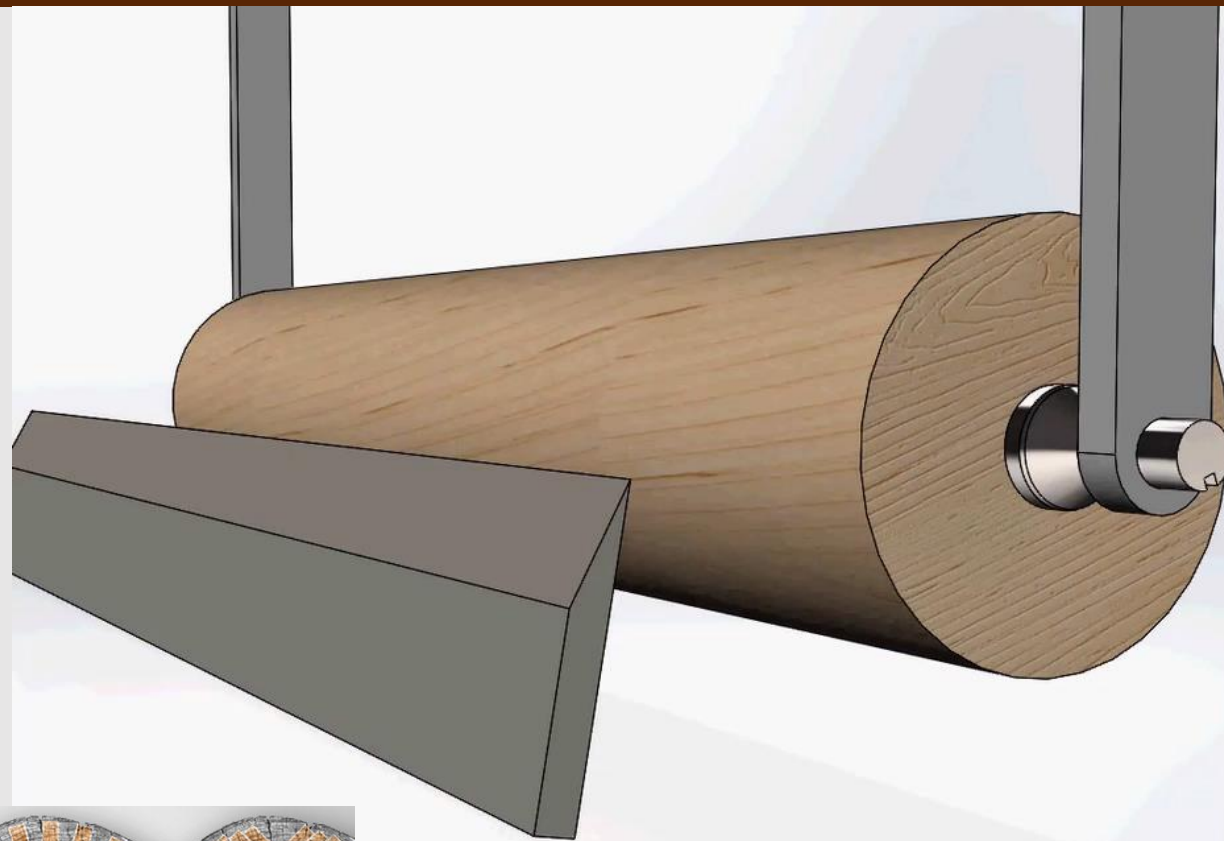
- Higher Recovery of usable fiber than lumber
- Zero-waste!
  - Any non-saleable wood product is used to generate electricity!

#### Carbon Sequestration

- 1 cubic meter of concrete offset by 1 cubic meter of wood sequester 1 ton of atmospheric carbon!

#### Timber Availability

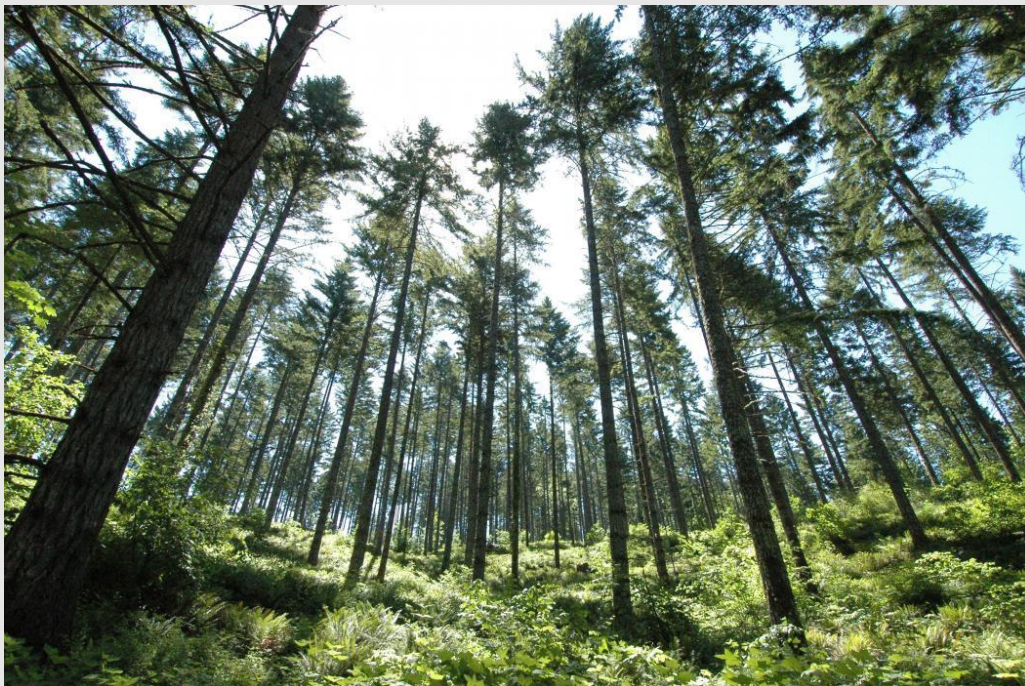
- Ideal timber for engineered veneer products is suppressed 2<sup>nd</sup> growth trees
- Average block diameter for our engineered veneer plant is 9"





## Our 2 biggest hurdles!

Timber



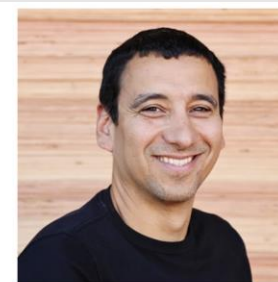
Labor



Adrian Gregory, Plywood Superintendent



Alan Kiel, Plywood Supervisor



Arturo Pelayo, Veneer Supervisor



Bill Childress, Plywood Plant Manager

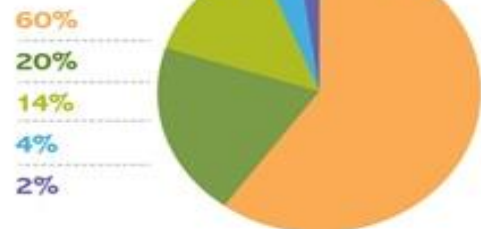


Chris Harpole, Plywood Maintenance Manager



Chris Roth, Rolling Stock Manager

**FORESTLAND ACREAGE BY OWNER (2015)**



**TIMBER HARVEST BY OWNER (2015)**



FEDERAL GOVERNMENT

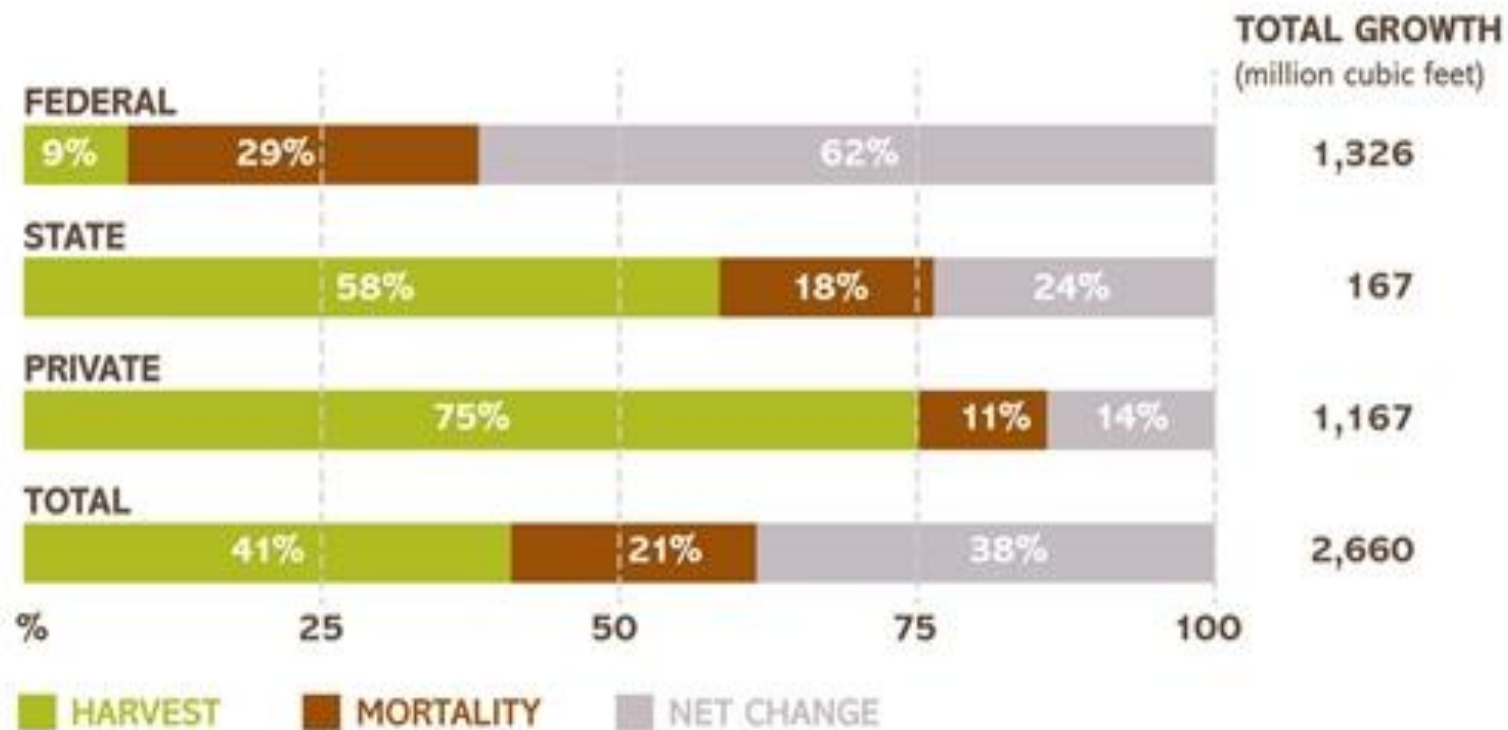
LARGE PRIVATE

SMALL PRIVATE

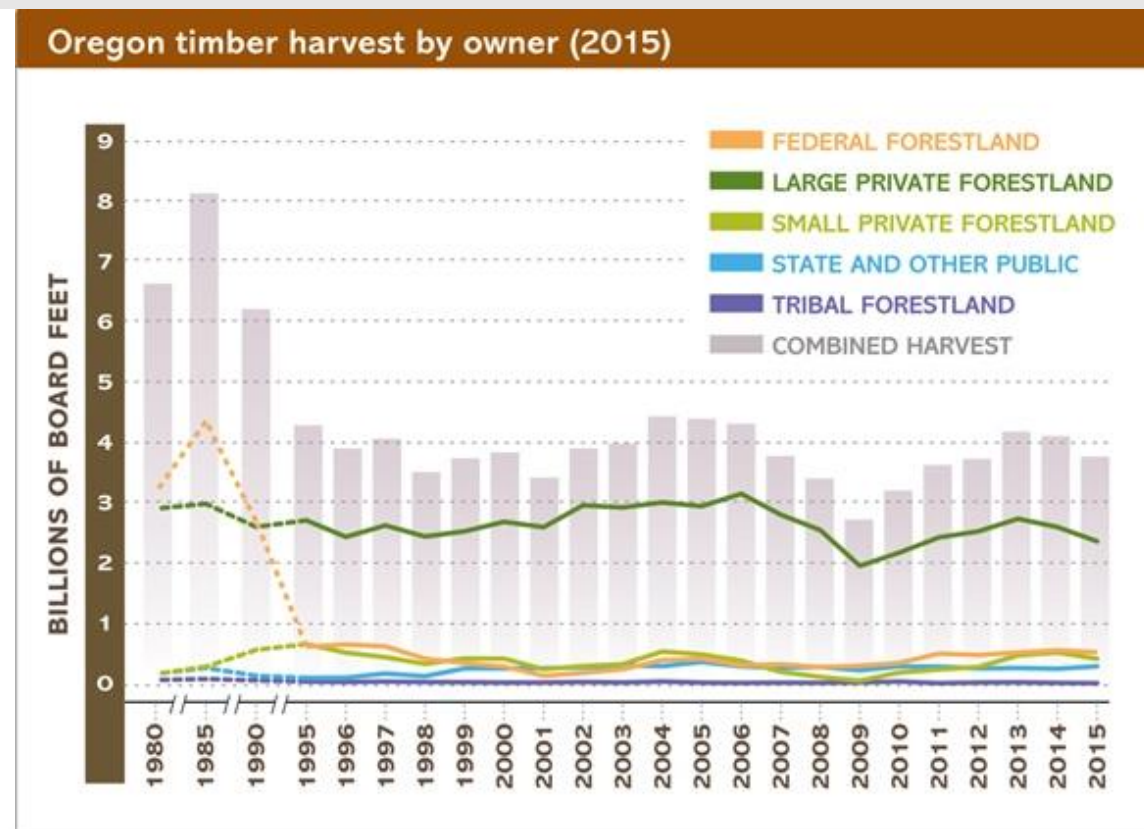
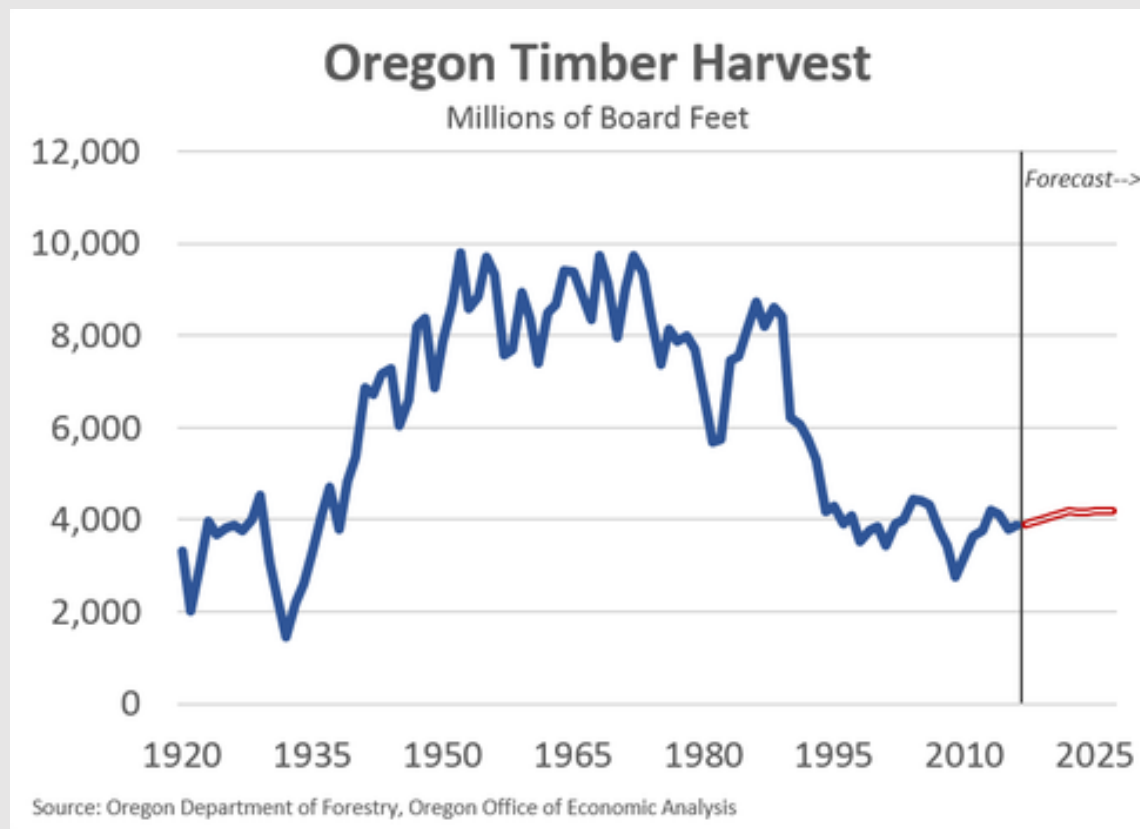
STATE AND OTHER PUBLIC

TRIBAL

**Growth, mortality and harvest 2011-2015**



# Historical Timber Harvest





### The Forest Sector Contributes:

- More than **61,000 living-wage jobs**
- An average wage of **\$50,000**
- **\$12.5 billion** in annual sales of timber and wood products

#### Oregon's forest sector jobs - 2015

##### Forest Management

Company management	1,221
Forestry and environmental consultants, researchers, academics	226
Bureau of Land Management	2,039
State of Oregon	1,063
U.S. Forest Service	3,148
<b>Subtotal</b>	<b>7,697</b>

##### Forestry Support

Forestry support (nurseries, machinery manufacturing, firefighting)	5,932
Logging	7,567
<b>Subtotal</b>	<b>13,499</b>

##### Primary Forest Products

Pulp and paper manufacturing	4,482
Sawmills and wood preservation	6,753
Veneer, plywood and engineered wood	9,009
<b>Subtotal</b>	<b>20,244</b>

##### Secondary Forest Products

Millwork (doors, windows, custom)	5,564
Wood kitchen cabinets and countertops	3,237
Other (manufactured homes, wood buildings, pallets, furniture)	2,682
<b>Subtotal</b>	<b>11,483</b>

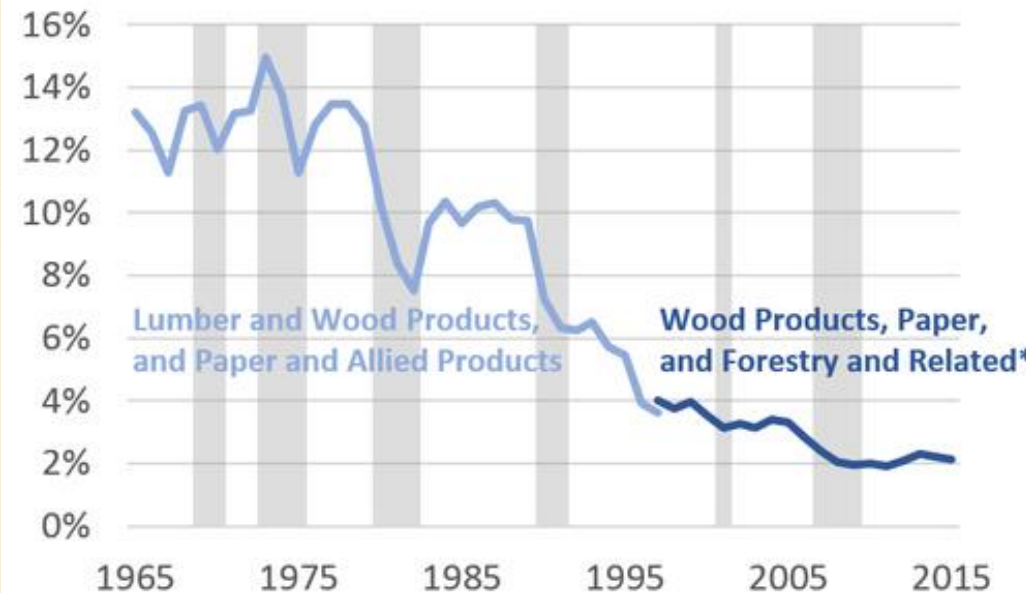
##### Distribution, Transportation and Other

Wood products wholesalers	2,369
Paper products wholesalers	762
Transportation of logs, chips, goods	4,670
Other (biomass electric power, airport operations, marine cargo handling, etc.)	286
<b>Subtotal</b>	<b>8,087</b>

<b>TOTAL</b>	<b>61,010</b>
--------------	---------------

### Oregon's Forest Sector

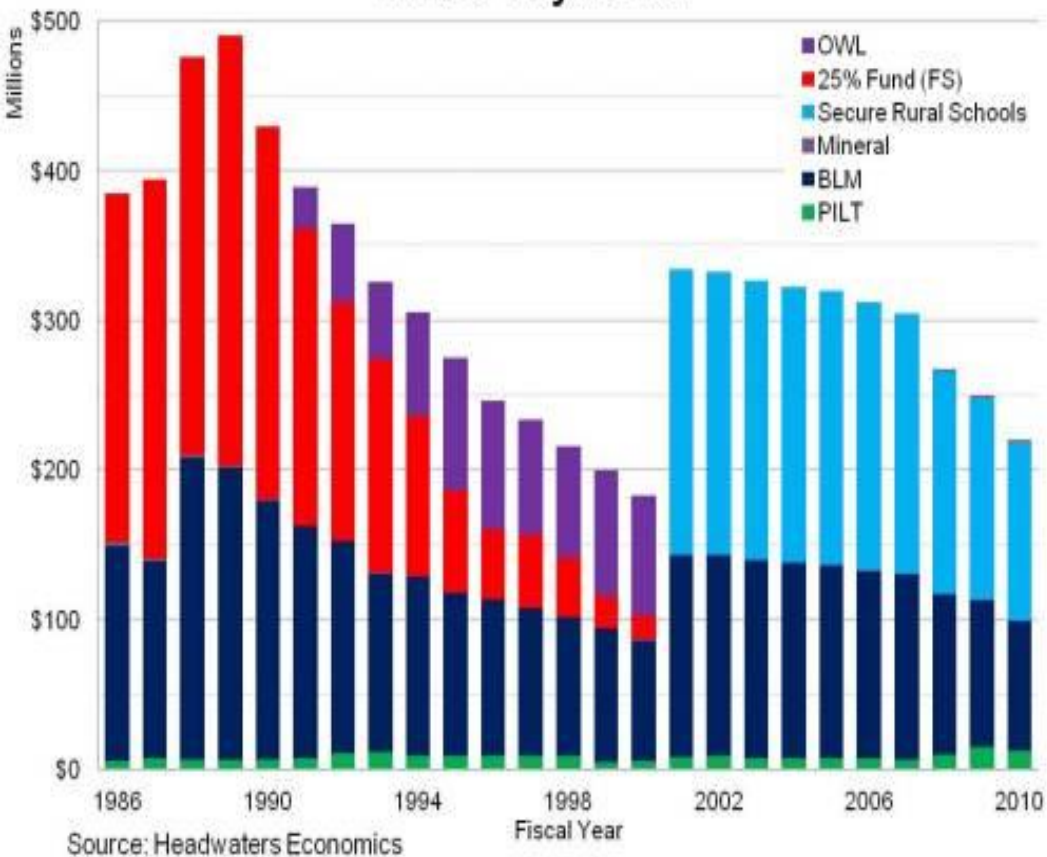
Percent of State GDP



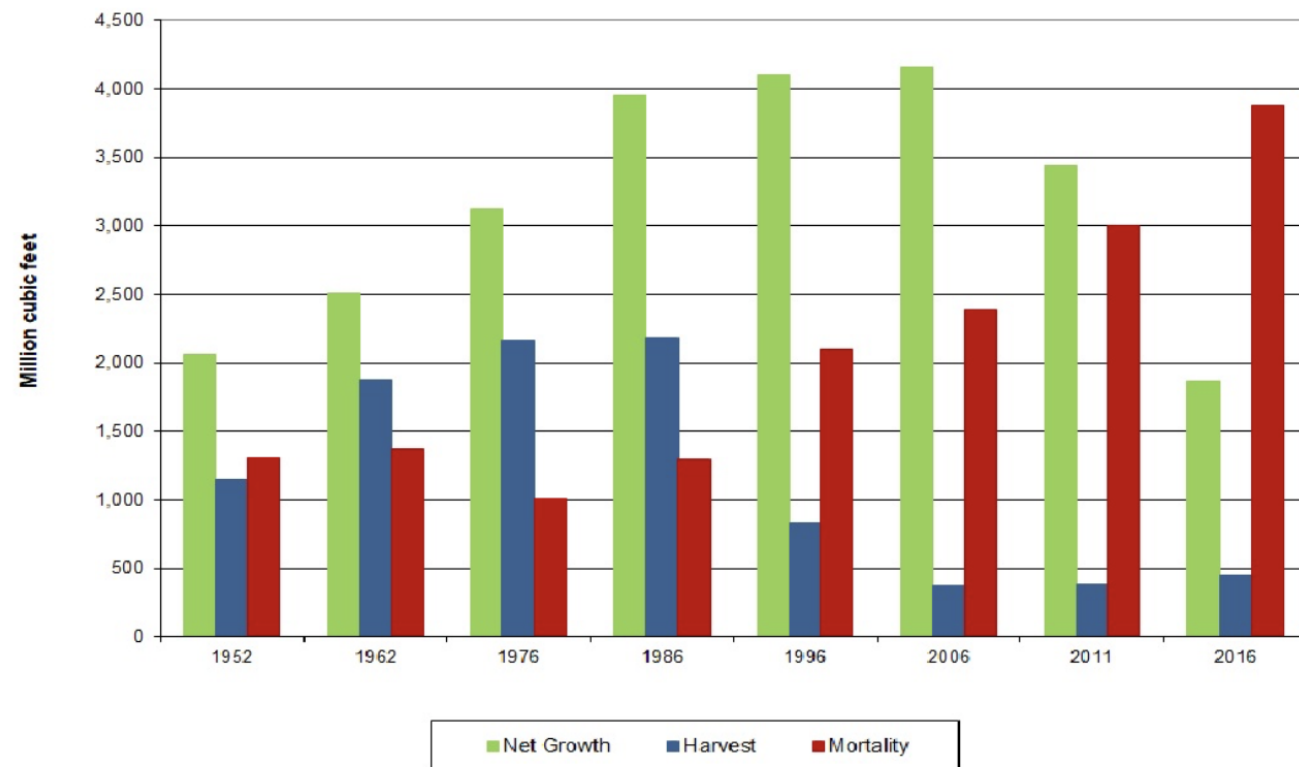
\* Includes Fishing | SIC-NAICS Series Break 1997 | Source: BEA, Oregon Office of Economic Analysis



### Timber Payments



### Annual Net Growth, Mortality, and Harvest on National Forest Timberlands - 1952-2016



## Solutions

- 20-year Stewardship Contracts
  - Don't just sign it into law, make it happen!
    - Employ our rural community actively managing the forests in their region!
- Manage our forests!
  - Must increase footage from Federal Lands- Our private lands are maxed out at sustained yield.
  - Timber availability is the single largest obstacle to increased rural employment!
- Encourage locally sourced products- Forest to Frame
  - Lower raw material prices would discourage imports from less sustainable regions of the world.







***[www.frereslumber.com](http://www.frereslumber.com)***

# **CLT Manufacturing: Creating Careers Through Empowerment and Community**





# OUR VISION

To foster harmony between the environment and construction with world-class site access solutions. This inspires our mission.

# OUR MISSION

Sterling provides environmentally favorable access solutions to energy infrastructure by embracing a culture where thoughtfulness and sincerity allow our 4C's to thrive.



# STERLING'S FACILITIES



Phoenix, IL



Lufkin, TX

We employ 500 employees at two facilities which have the capability to manufacture up to 800,000 M<sup>3</sup> of TerraLam CLT panels per year.

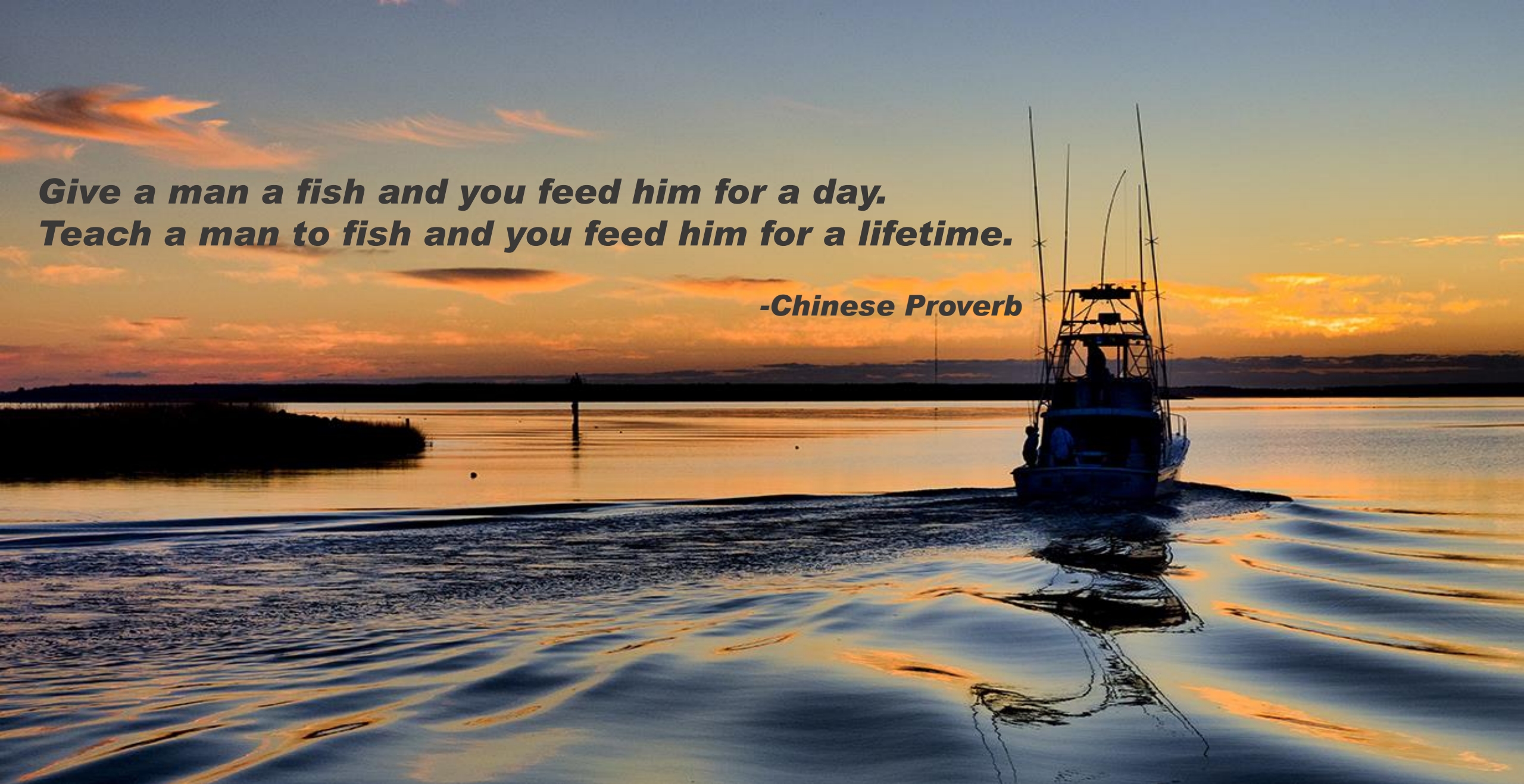


# BUILDING OUR WORKFORCE

Sterling participates in community-based events that build awareness among high school students of available employment options.







***Give a man a fish and you feed him for a day.  
Teach a man to fish and you feed him for a lifetime.***

***-Chinese Proverb***







# Employee Development





# Employee Development





# Creating a Community Among Our Colleagues





# Connecting with Our Communities







# Connecting with Our Communities





# THANK YOU



**STERLING**





# What did you think of the briefing?

**Please take 2 minutes to let us know at:**  
**[www.eesi.org/survey](http://www.eesi.org/survey)**

***Materials will be available at:***  
**[www.eesi.org/092320workforce](http://www.eesi.org/092320workforce)**

***Tweet about the briefing:***  
**[#eesitalk](#)   [@eesionline](#)**

Wednesday, September 23, 2020