

A scenic landscape photograph of a wide river valley. The river flows through a lush green valley, surrounded by rolling hills and mountains in the distance. The sky is filled with dramatic, grey clouds, with some light breaking through. The overall mood is serene yet powerful.

# Our Rivers: Activism, Action, the EPA, and Then We Verify

Jeff Levinton

Stony Brook University

6/29/2017



**TOXIC! OPEN A NEW CAN of WORMS!**

GO WITH  
THE FLOW!  
every thursday

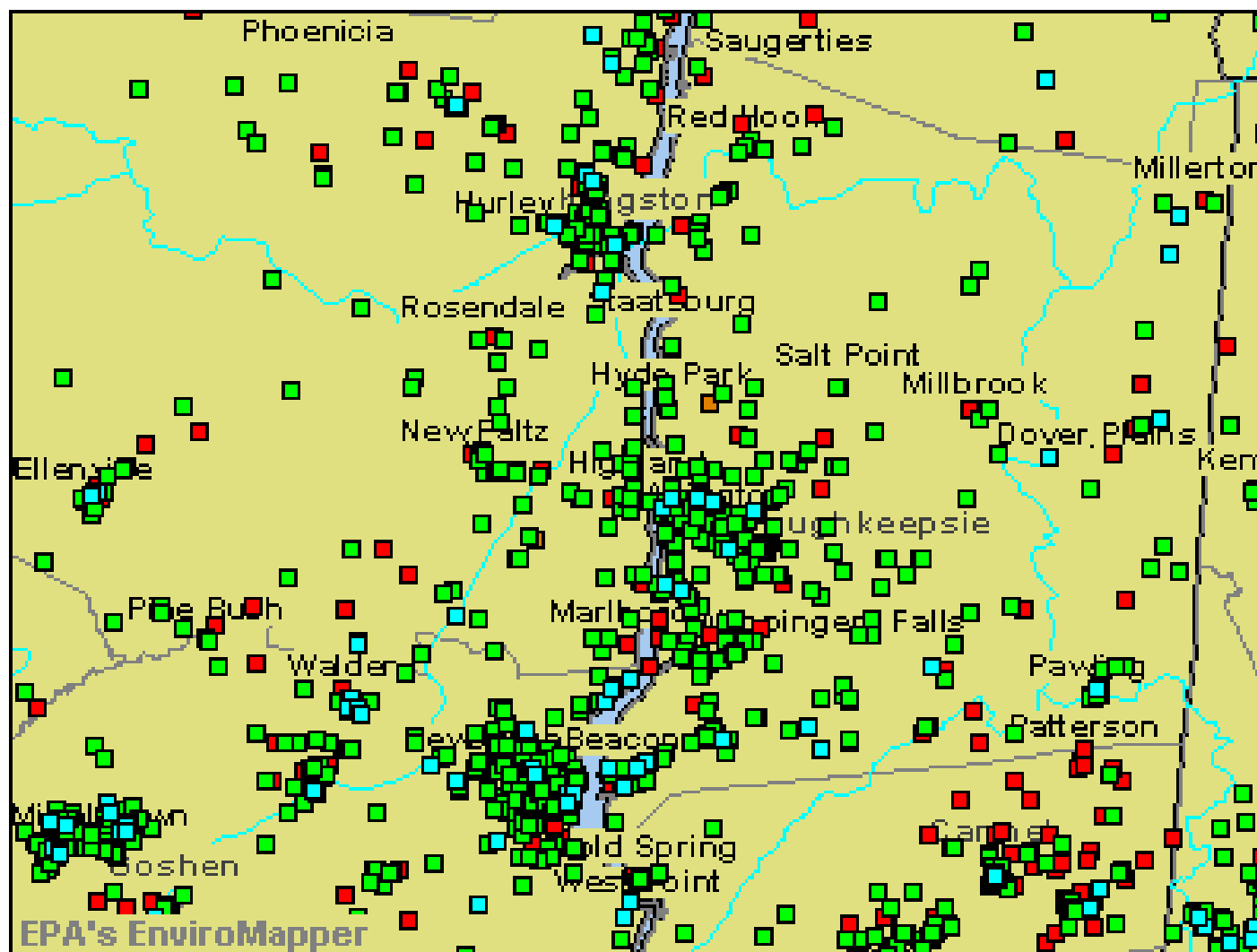
99

4th APRIL 1991

**TOXIC!**

2





**Hazardous Waste and Toxic Water  
Discharges**

An aerial photograph of a vast, flat landscape, likely a marsh or wetland. A prominent, winding waterway, the Hudson River, flows from the top center towards the bottom right. The river is flanked by large, flat areas of land, which are identified as South Cove and Foundry Cove. The terrain is a mix of dark and light patches, suggesting different types of vegetation or water levels. In the background, there are rolling hills or mountains under a clear sky. The overall scene is a natural, undisturbed environment.

**South Cove**

**Hudson River**

**Constitution Marsh Audubon Sanctuary**

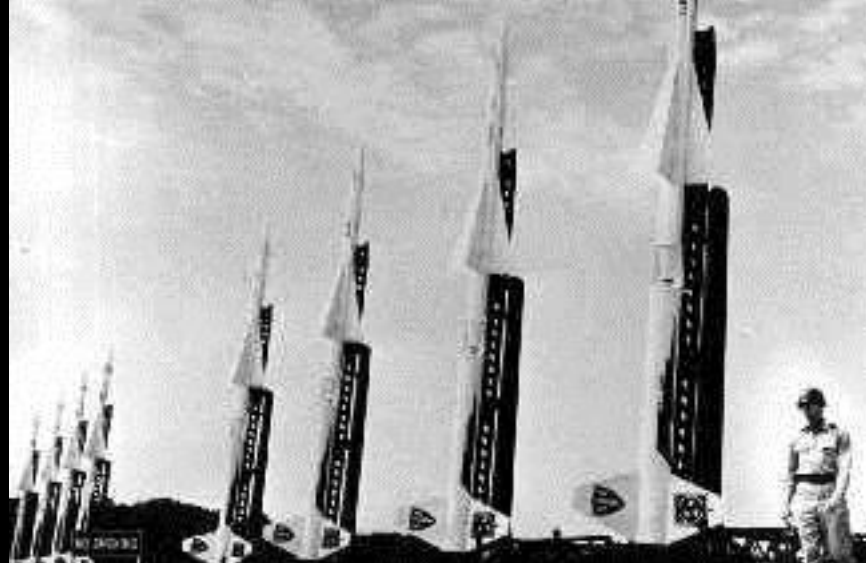
**Foundry Cove**

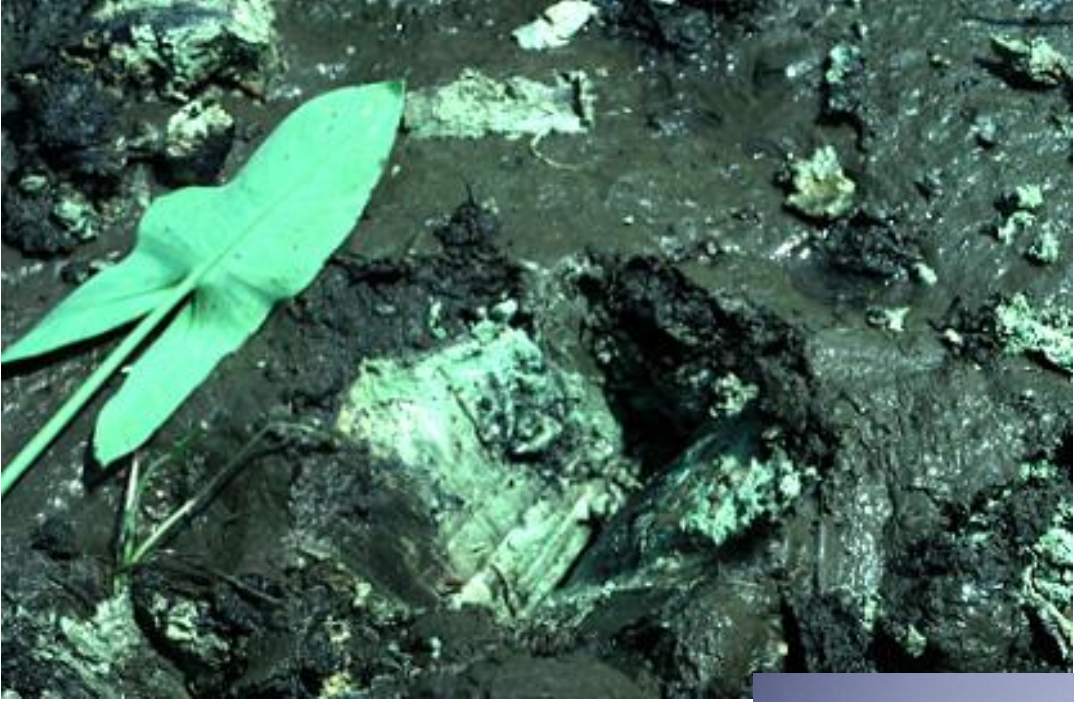
*The Gun Foundry, by John Ferguson Weir*



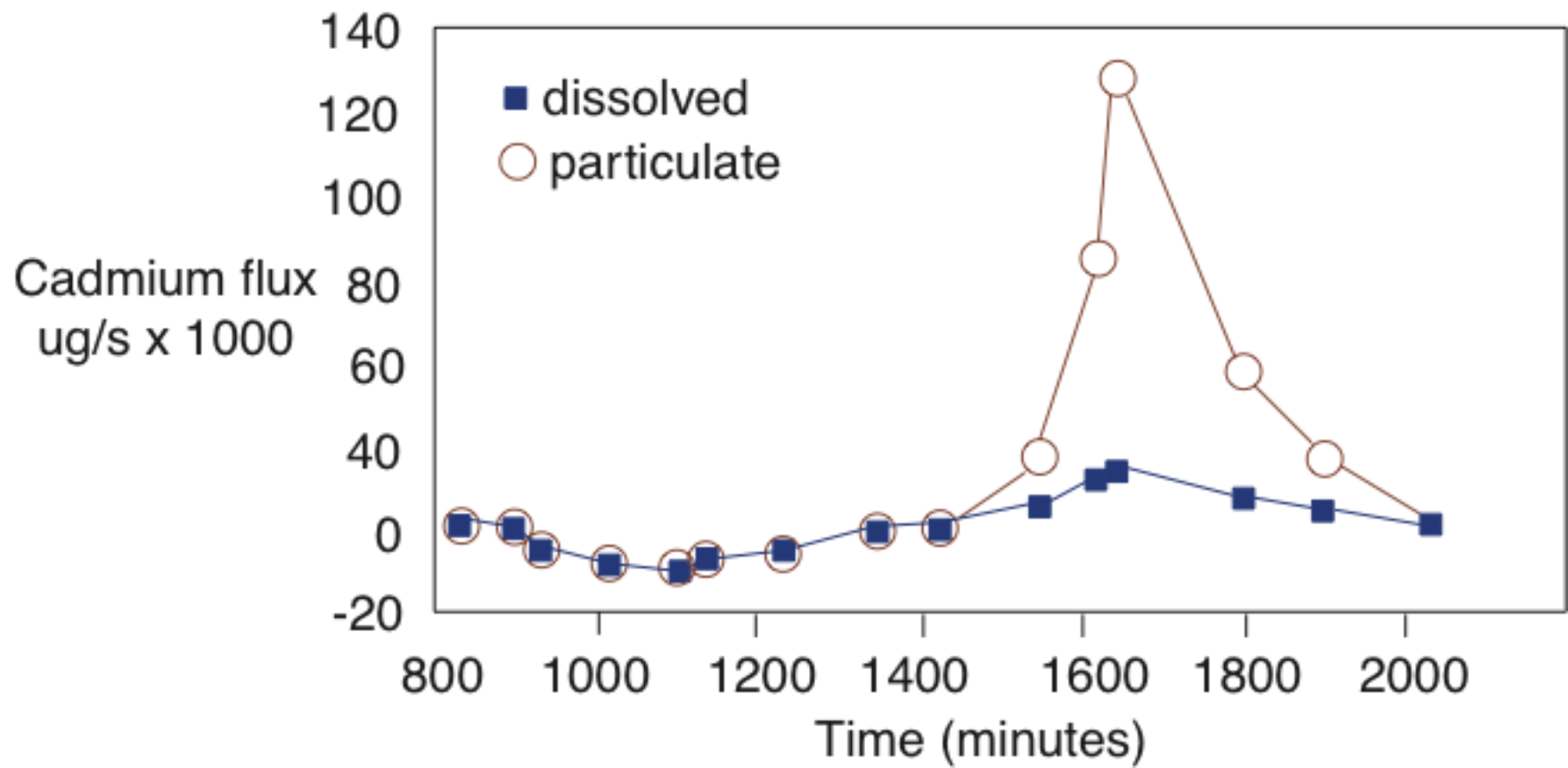
Putnam County Historical Society

# Defending Gotham: Nike Missiles, 1954-1974









Cadmium flux - 1986

Jim Rod





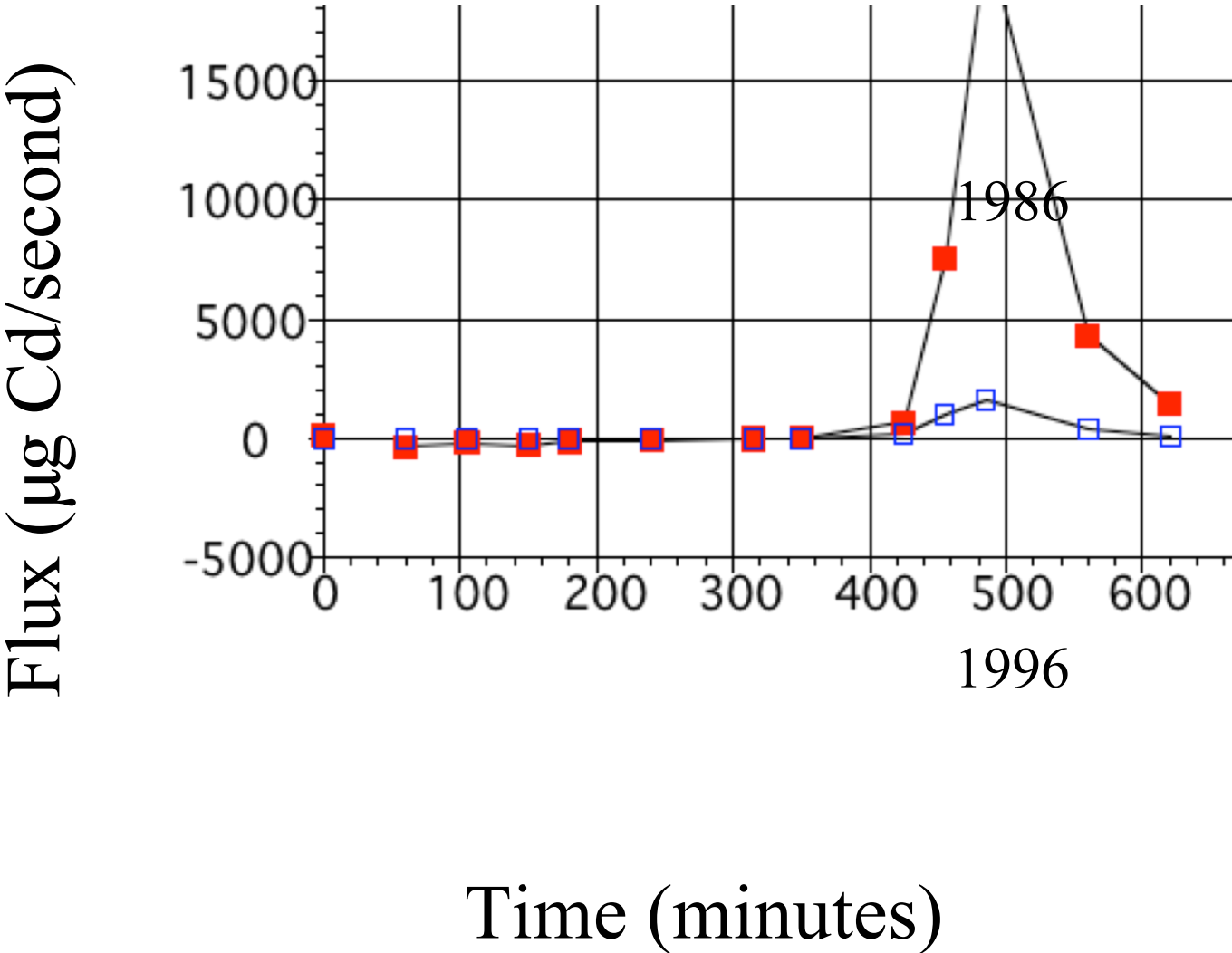
Bladder Used to Contain Marsh from Tidal Inundation



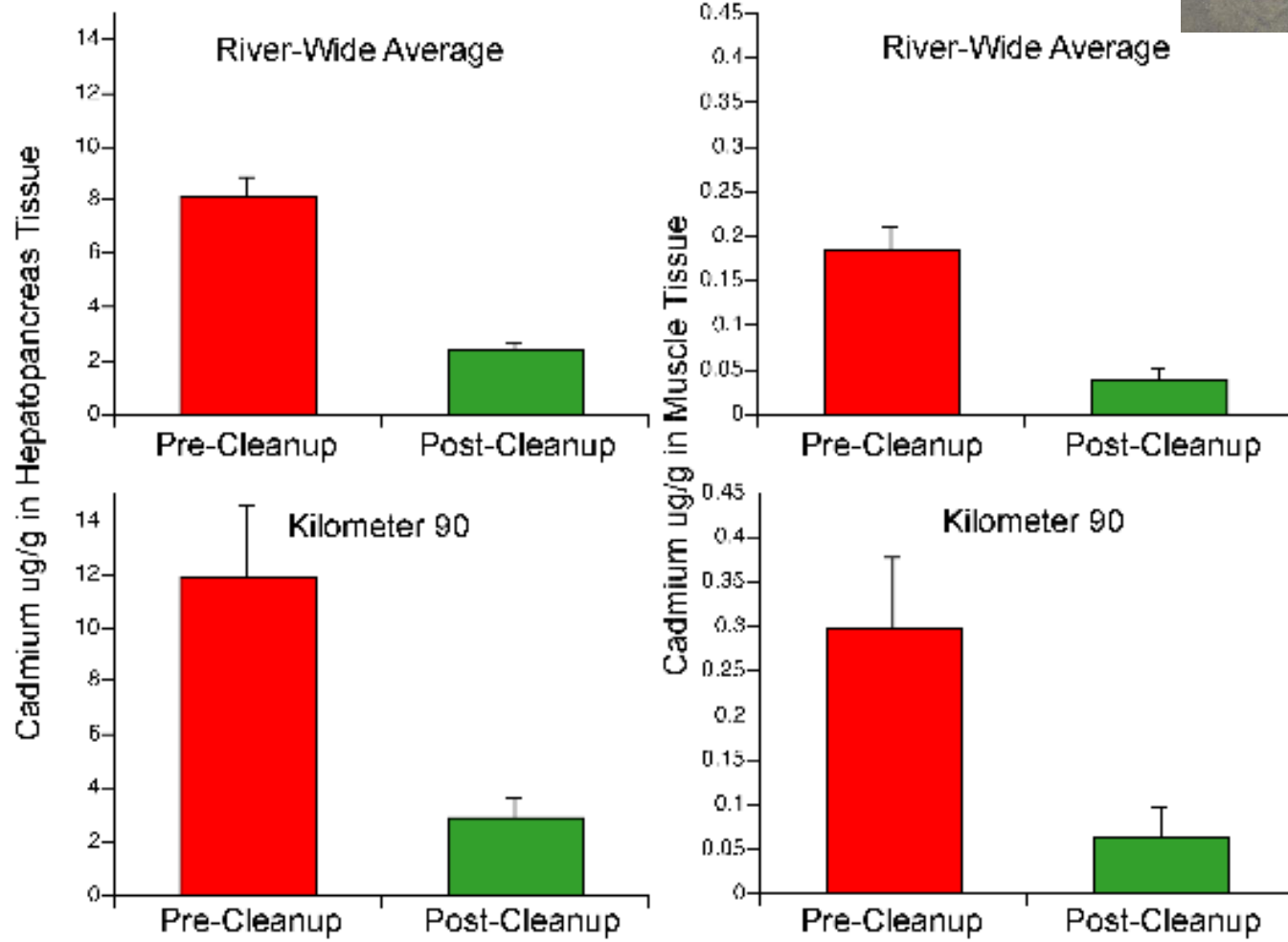
Dredging of Open Cove to Depth of 30 cm



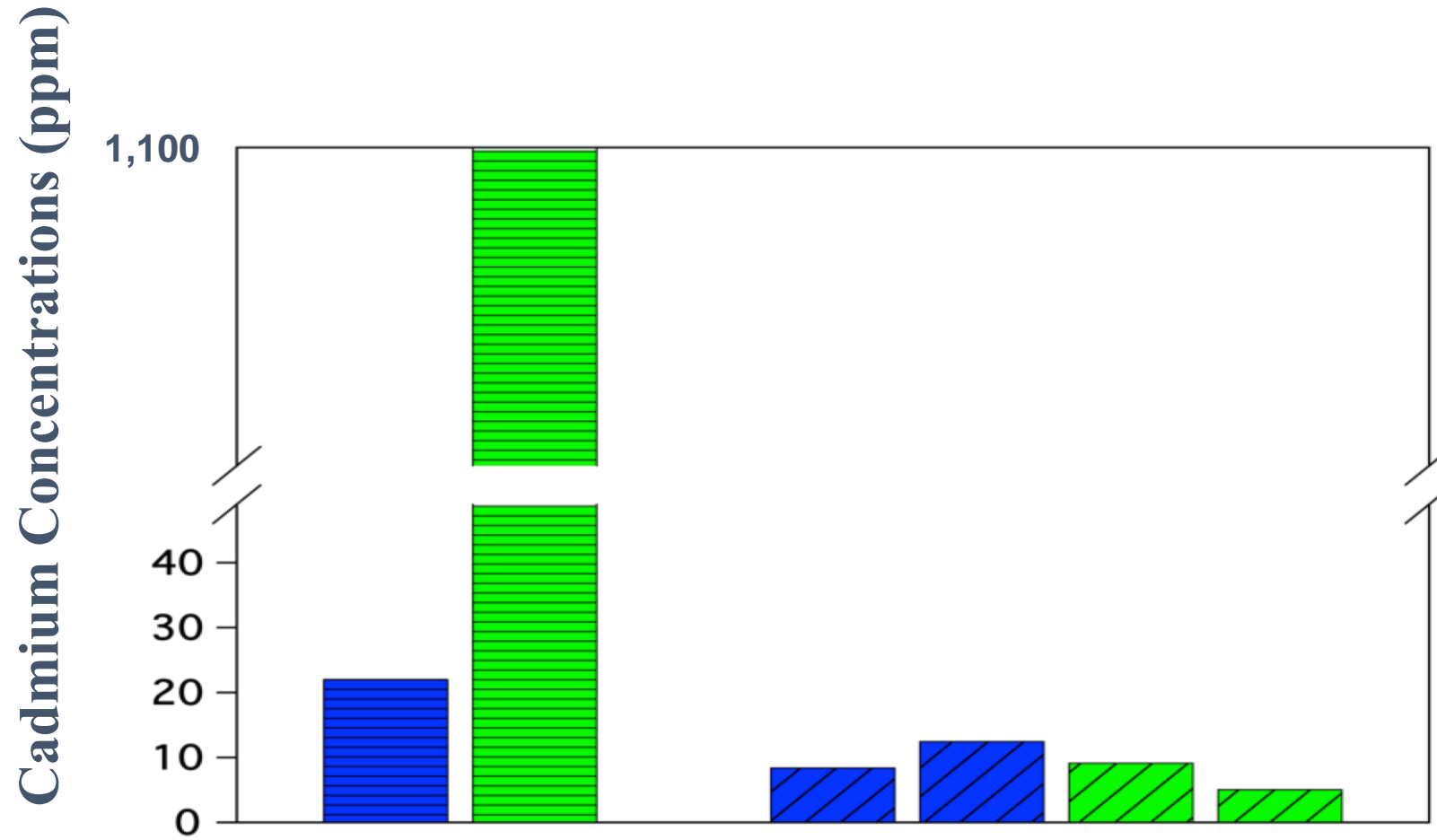
# Cd flux: Foundry Cove - Hudson River



# Blue crab, *Callinectes sapidus*



# Cadmium in Limnodrilus



**Cove:**

South Foundry

South

Foundry

**Year:**

1984

2002



