
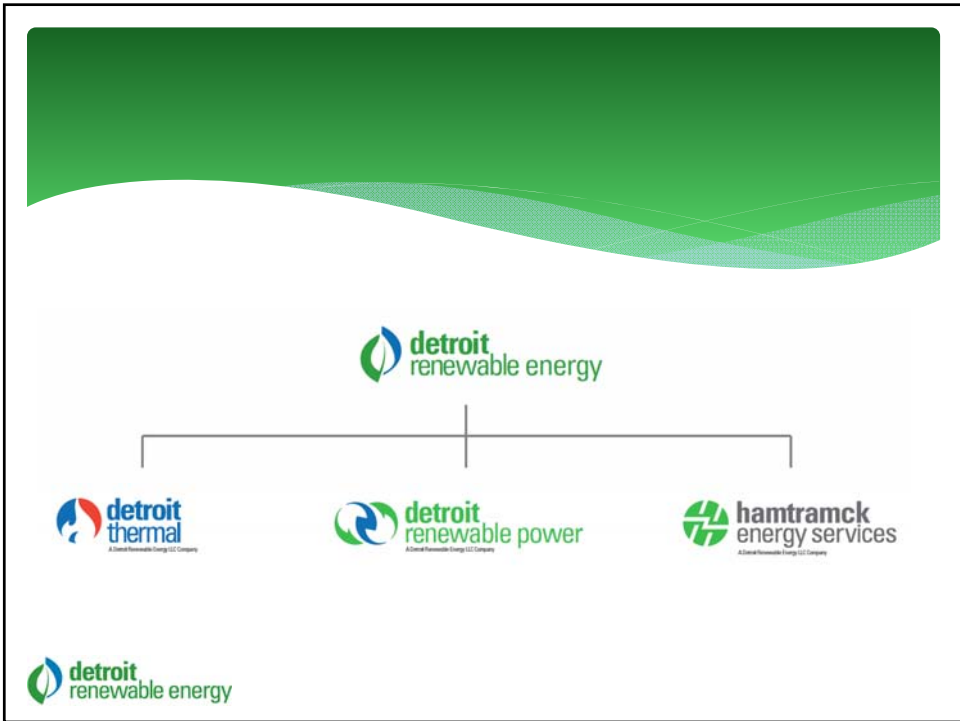


Detroit Renewable Energy, LLC

Steven A. White
Chairman



The slide features a green gradient background with a wavy pattern at the bottom. The company name and chairman's name are centered in white text. The logo is positioned in the bottom left corner.



Atlas Holdings and DRE: \$50 Million Investment in 2010

- * Steam for District Heating – Detroit Thermal
- * Safe MSW Disposal, Recycling & Renewable Energy – Detroit Renewable Power
- * Clean Energy Services & Staffing for Major Local Manufacturers – Hamtramck Energy Services



Detroit Thermal

- * Since 1903
- * 4 Plants, 20 Boilers, 3 Fuels (MSW, Gas, Oil)
- * 145+ Buildings, 30+ million sq. ft. in City of Detroit
- * Includes Critical Services 24/7 to 5 Major Hospitals
- * \$35 Million Invested Since 2003
- * \$120 Million in New Customer Commitments since 2008



Detroit Thermal Advantages: Cost & Reliability

- * Up to 70% Savings to Businesses in Avoided In-House Boiler, Labor & Maintenance Costs
- * DT Average Availability Since 2004: 99.5%
- * System Operations 24/7/365



Detroit Thermal Advantages: Green Energy

- * Detroit Renewable Power EFW Operations
- * 3,300 Tons/Day, 365 Days/Year
- * 68 MW Electricity (to DTE)
- * 500,000 Lbs/Hr Steam (to Detroit Thermal)



Renewable Portfolio Standard

**Michigan Public Service Commission Now Finalizing RPS
(Sept. 2011)**

Municipal Solid Waste (MSW) Eligible as Renewable

- * DRP Provides a Net Reduction in Greenhouse Gas Emissions
- * Each Ton of MSW Processed Displaces A Barrel of Oil



Our View

Successful Investing in District Energy Infrastructure Requires:

- *Strong Focus on Energy Efficiency, Security & Sustainability
- *Commitment to Environmental Stewardship
- *Energy/Infrastructure Sector Experience & Knowledge
- *Experience with Both Public & Private Sector Interests
- *Open & Transparent Public & Employee Communications
- *Willingness to Take Technology & Transition Risks
- *Dedication to Successful Economic, Community & Civic Development
- *Legislative Leadership – Exhibited by S.B. 652 and H.R. 402



Thank You

